

Active Transportation Working Group

September 19, 2019

www.scag.ca.gov



Agenda

www.scag.ca.gov



Agenda



1. 2019 Active Transportation Program Update
2. Connect SoCal Update
3. Disadvantaged Communities Active Transportation Planning Tool
4. *Go Human* Update
5. Stakeholder Needs Discussion
6. ATWG Outlook

2019 Active Transportation Program Update

Hannah Keyes

Active Transportation and Special Programs

September 19, 2019

www.scag.ca.gov



Cycle 4 Funding Overview

- Total Program Funding: \$440M
 - Statewide: \$219M (50%)
 - Small Urban and Rural: \$44M (10%)
 - MPO: \$175M (40%)
- SCAG Regional Program Funding: \$92.5M (53% of MPO Component)
 - \$88M for Implementation
 - \$4.5M for Plans/Programs
- SCAG Region Portion of Statewide Bucket: \$137M (62% of Statewide)
 - 23 projects

ATP Cycle 5 Overview



- Statewide Program
 - Call for Projects in Spring 2020
 - \$440M in funding anticipated (consistent with Cycle 4)
 - Statewide guidelines development to follow [ATP Symposium](#) (October 29–30) with workshops late Fall 2019–early Winter 2020
- Regional Program
 - Regional allocation to be determined
 - Regional guidelines development process will occur in parallel with statewide
 - Cycle 4 Guidelines can be found [here](#)

- New Caltrans Resources:
 - Mode Share Action Plan 2.0
 - [Interim Count Methodology Guidance](#)
 - New Active Transportation Resource Center (ATRC) [website](#)
 - ATRC Automated Counter Loan Pilot Program

Connect SoCal Update

Hannah Keyes

Active Transportation and Special Programs

September 19, 2019

www.scag.ca.gov



Purpose of the Plan

- 2020–45 Regional Transportation Plan/Sustainable Communities Strategy
- Long-range visioning plan that balances future mobility and housing needs with economic, environmental and public health goals
- The components are required by federal and state legislation and is an important planning document for the region, allowing project sponsors to qualify for federal funding. SCAG is required to update this long-range planning document every four years.

ATWG Input

- ATWG has helped guide Plan development since early 2018
- Significant input on the Strategies and Actions

Next Steps

- Public Review Draft
 - Main Book and all Technical Reports
 - To be released November 7th
 - Public Comment Period to follow
- Opportunity to comment formally, as well as discussion time at November ATWG meeting

SCAG's Disadvantaged Communities Active Transportation Planning Tool

Sam Corbett

Alta Planning + Design

September 19, 2019

www.scag.ca.gov



A black and white photograph of a woman wearing a white tank top with 'OPTICAL VIBES' printed on it and a white baseball cap, riding a kick scooter on a city sidewalk. Other pedestrians and parked cars are visible in the background.

SCAG Disadvantaged Communities Planning Initiative

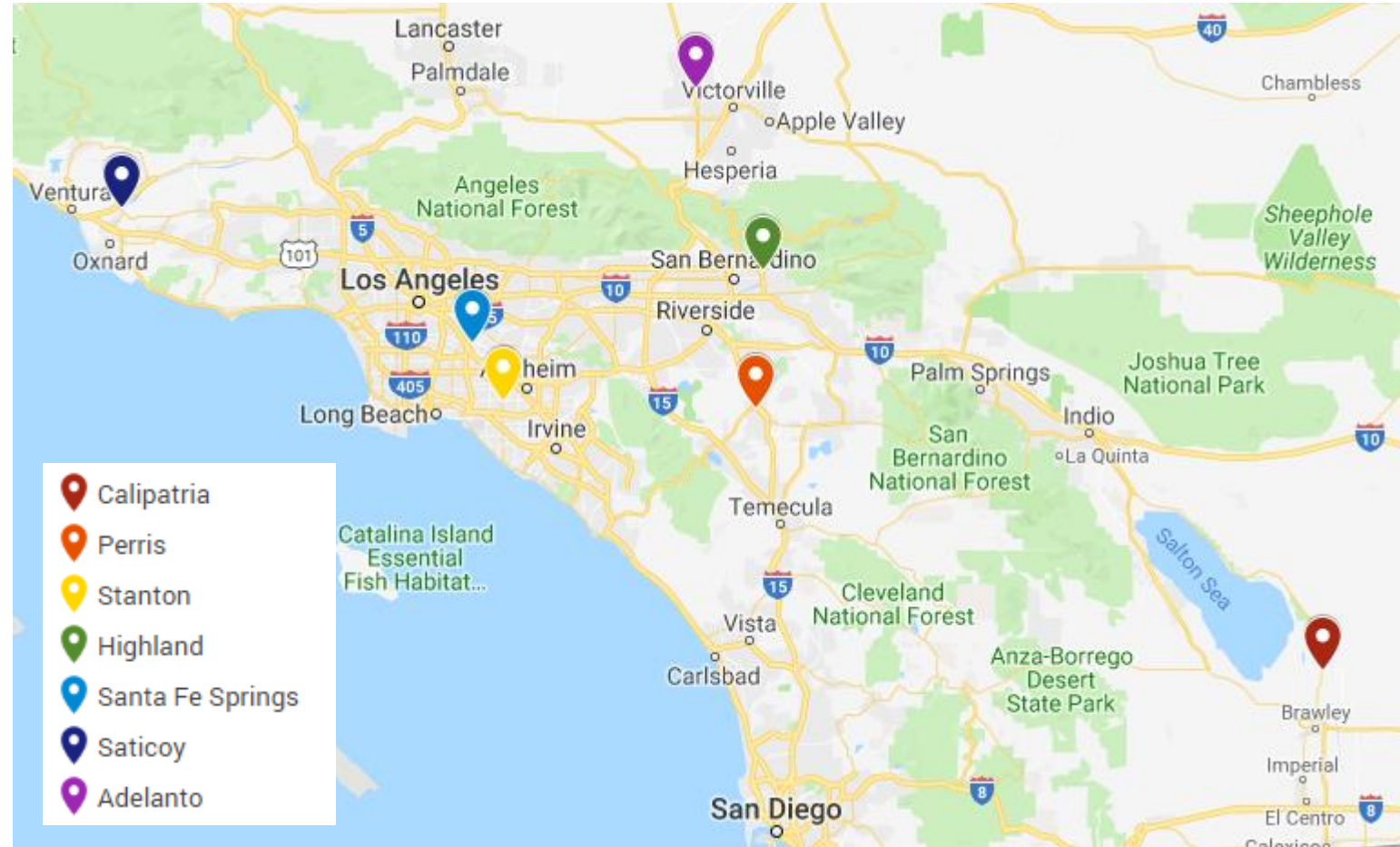
Building an Active Transportation Plan Template

Active Transportation Working Group
September 19, 2019



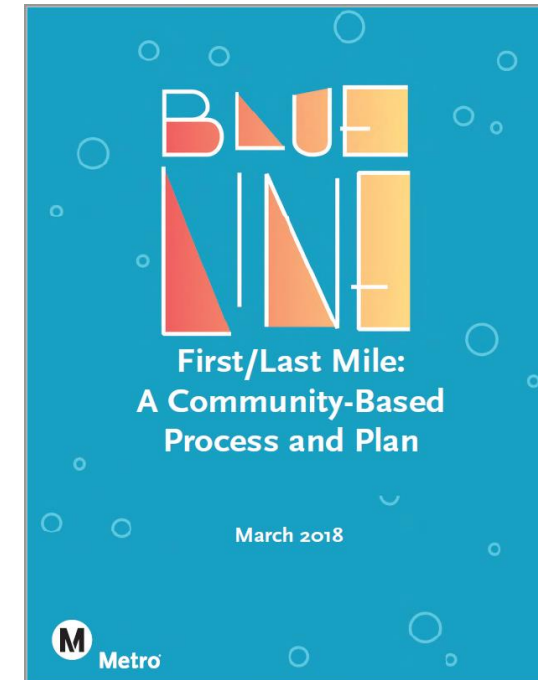
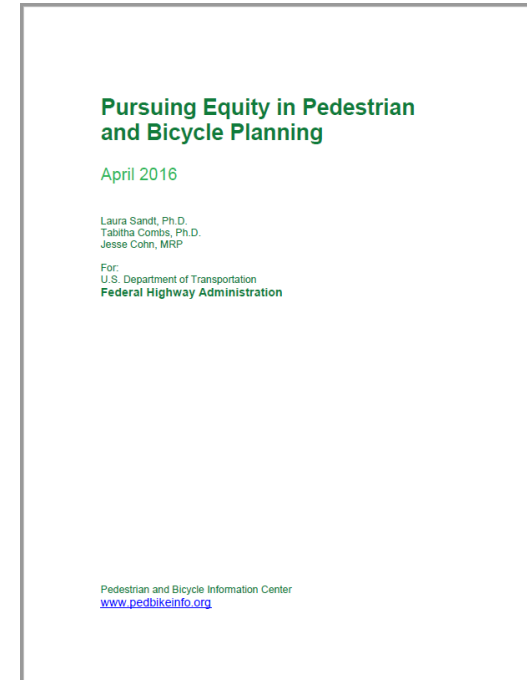
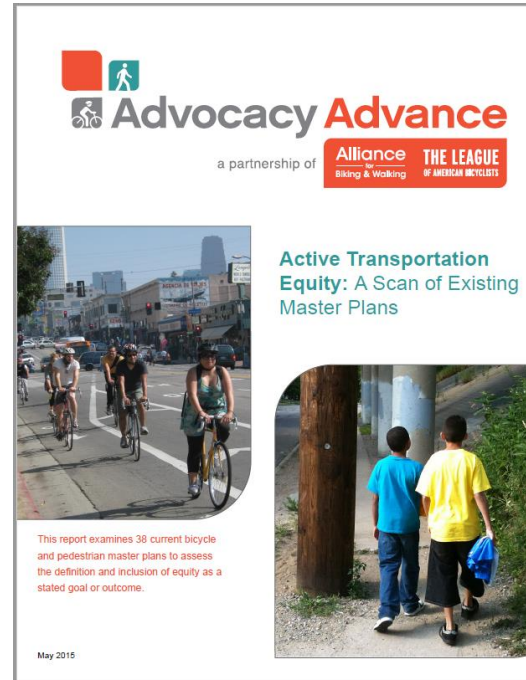
OVERVIEW: DACPI

- 18-month project
- AT Plan template
 - Standardized elements
 - Outreach & Equity Frameworks
 - Demonstration events
- Pilot process in 7 communities



RESEARCH

- National Scan of Best Practices
- Outreach + Equity Frameworks
- Expert Focus Group



EXPERT FOCUS GROUP

- 17 participants representing:
 - California + LA Departments of Public Health
 - Caltrans, Metro
 - Cities of Long Beach, Santa Ana, Santa Monica
 - OCTA, RCTC, SBCTA, WRCOG
 - Safe Routes to School National Partnership



EXPERT FOCUS GROUP

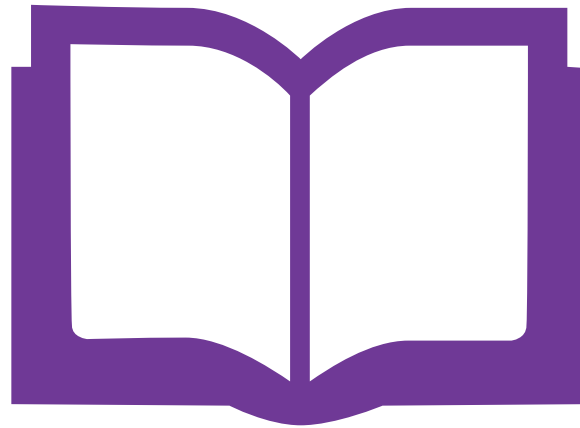
Recommendation	Application
Emphasize the data and sources required by likely funding outlets	Template
Include an overview of public health issues and the relation to transportation	Template
Include language to manage expectations of public health outcomes	Template
Acknowledge all forms of active transportation and include a section on skateboards and push scooters	Template
Consider “low speed lanes” rather than “bike lanes” and consider a different nomenclature so that the traditional bike-centric names be broader.	Template
Go to where people are and used a trusted community partner to assist with outreach, and host meeting in most common language	Outreach Framework
Include engineering-level details such as renderings and accurate cost estimates	Template
Create a folder of photos of local examples of facilities that communities can access.	Template
Include draft policies that aim to reduce adverse impacts of transportation improvements , such as housing policies, to ensure current residents can still afford to live in their community once improvements have been made.	Equity Framework

BUILDING THE TOOLKIT

Manual

Template

Resources



BUILDING THE TOOLKIT



The Manual

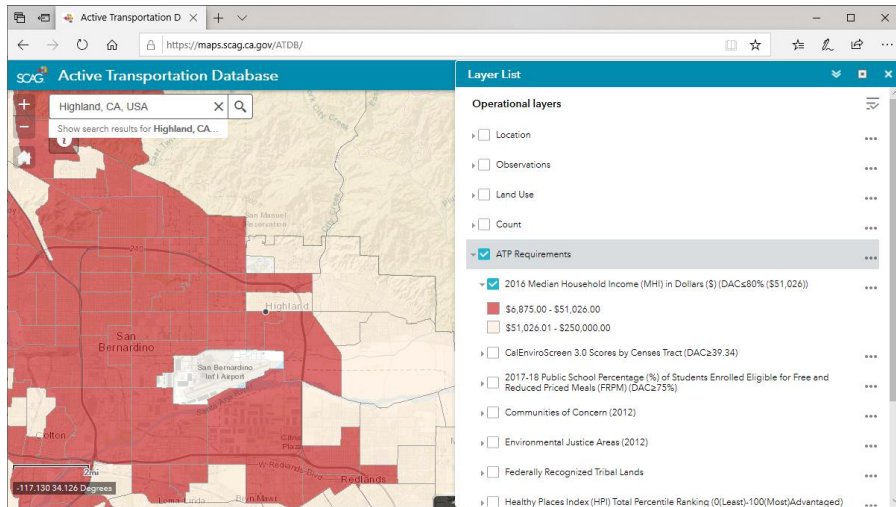
- SCAG's Disadvantaged Communities Planning Initiative
- Why Active Transportation?
- Overview of AT Plans
- How to Use the Template
- How to Use the Resources
- Getting Started
- Adopting and Implementing the Plan



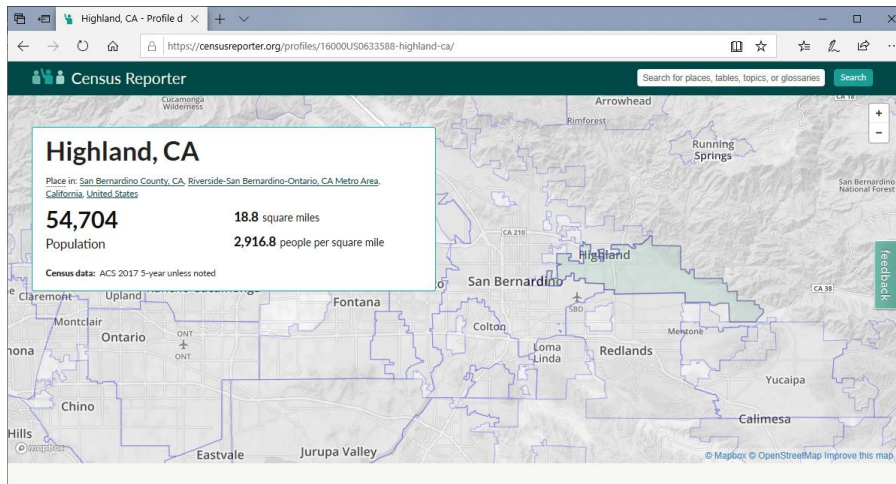
BUILDING THE TOOLKIT



SCAG's Active Transportation Database



Census Reporter



Consultant Services for Active Transportation Planning

Service	Pre-Plan	Plan Creation	Implementation
Visioning	✓	✓	
Outreach	✓	✓	✓
Data Analysis		✓	✓
Mapping		✓	
Graphic Design	✓	✓	
Concept Design		✓	✓
Recommendations		✓	✓
Cost Estimates		✓	✓
Feasibility Assessments		✓	✓
Engineering		✓	✓
Programs	✓	✓	✓
Grant Writing	✓		✓

BUILDING THE TOOLKIT



The Template

- Executive Summary
- 1. Introduction
- 2. The Vision
- 3. Local Context
- 4. Existing Conditions
- 5. Community Engagement
- 6. Network Recommendations
- 7. Programmatic Recommendations
- 8. Implementation
- Appendix

2. The Vision

***EQUITY FRAMEWORK**

This Plan is guided by an Equity Framework, which asks:

- Who are the most vulnerable groups in the community?
- What is the desired condition of well-being that the City and residents want for the most vulnerable communities?
- How can implementation of the Plan work towards these conditions?

We identified vulnerable user groups as well as a vision and supporting goals that we believe will advance equity: *safety and health, access and comfort, affordability, and an enhanced network.* We also defined future actions and ways to measure progress on these four goals.


Focusing on Disadvantaged Groups

Some groups of [COMMUNITY NAME] face greater vulnerabilities and disparities in the transportation system. The more groups a person identifies with, the greater the disparity. These groups include:

- People of color
- Women
- People of no- and low-income
- People with limited English proficiency
- People with disabilities
- Children and seniors
- Single parents
- People who don't own cars or do not drive

Equity means that one's identity as a resident of our community has no detrimental effect on the distribution of resources, opportunities, and outcomes for them.

Courtney Banker
Remove asterisk if keeping Equity Framework in AT Plan and update accordingly. Otherwise, remove this section and begin chapter at "Vision."



This Plan works to serve and improve transportation for all residents of our community.

Active Transportation Plan | [Insert Community Name] | 36

BUILDING THE TOOLKIT



The Resources

- Outreach Guide
- Equity Framework
- Graphics Library
- Data Analysis Guide
- Completed Active Transportation Plans

The screenshot shows the TIMS interface with a query result summary for Ventura County, Ojai, from 01/01/2014 to 12/31/2018. The summary includes a table of collision types and a 'Download Raw Data' dialog box. A callout box points to the dialog box, and another callout box points to the 'Number of Collisions by Collision Severity' chart.

Download the 3 CSV files:

1. Collisions
2. Parties
3. Victims

While you're here, check out the graphs and other summaries available directly from TIMS

Category	Count	Percentage
Total Collisions	127	
Ped Collisions	13	10.2%
Total Victims	0 Killed, 168 Injured	
Bike Collisions	17	13.4%
State Highway	94	74%
Motorcycle Collisions	7	5.5%

Collision Severity	Count	%
2 - Injury (Severe)	17	13.39%
3 - Injury (Other Visible)	39	30.71%
4 - Injury (Complaint of Pain)	71	55.91%

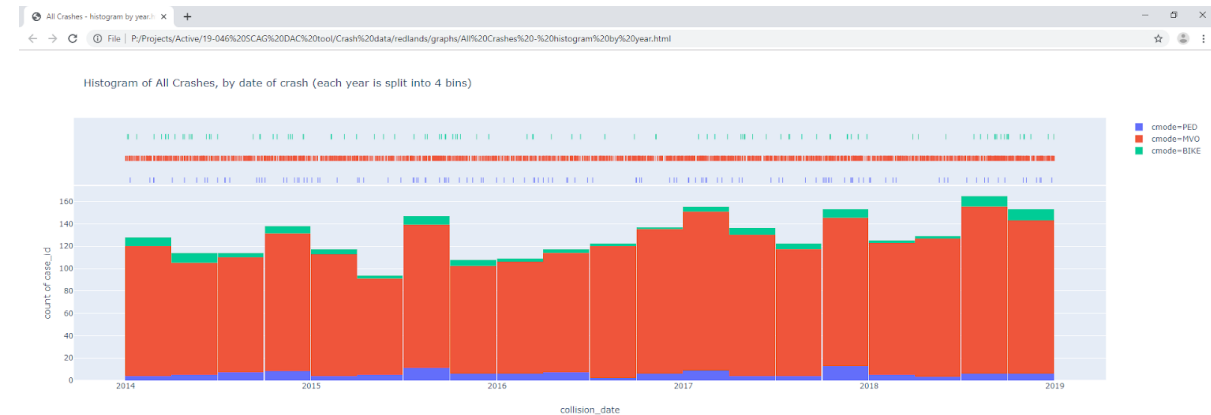
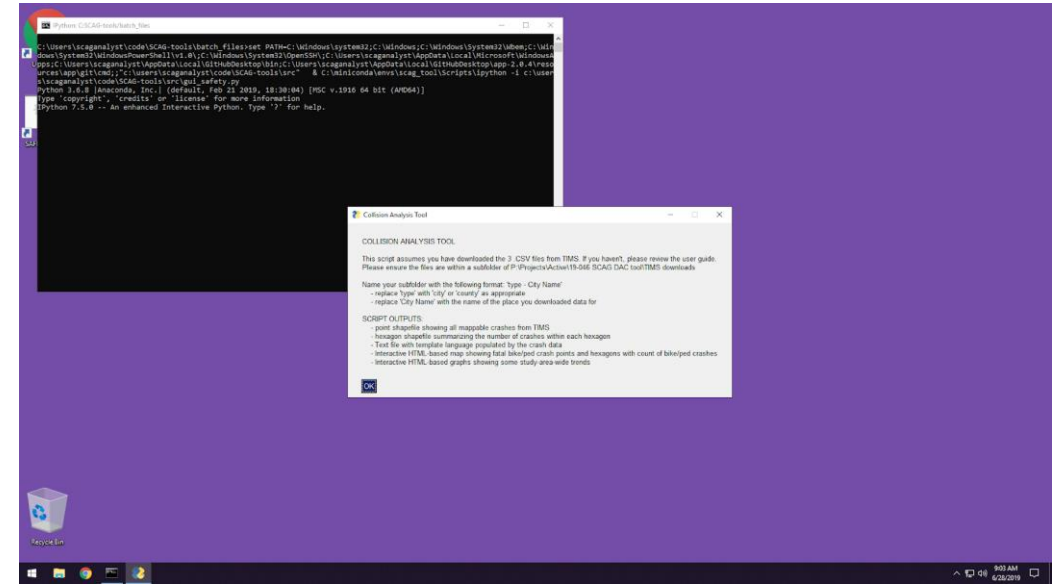
DATA ANALYSIS TOOLS

Automated Analyses

Safety

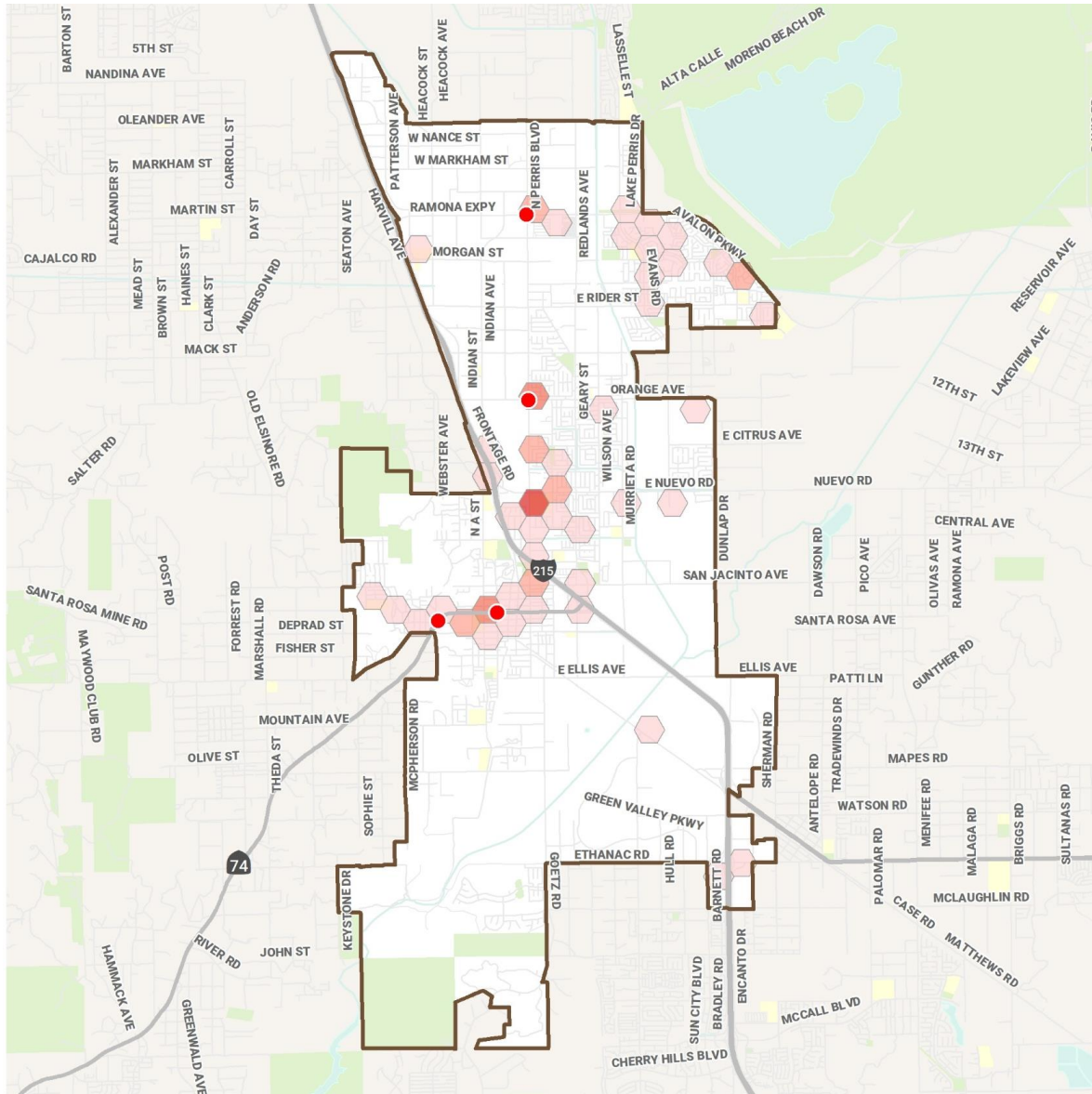
Connectivity

Equity



DATA ANALYSIS TOOLS

Safety Barriers BICYCLING COLLISIONS Perris, CA



Collisions per Hexagon (2014 - 2018)

- 1 Collision
- 2 Collisions
- 3 Collisions
- 4 Collisions
- Bicyclist Fatality

Destinations + Boundaries

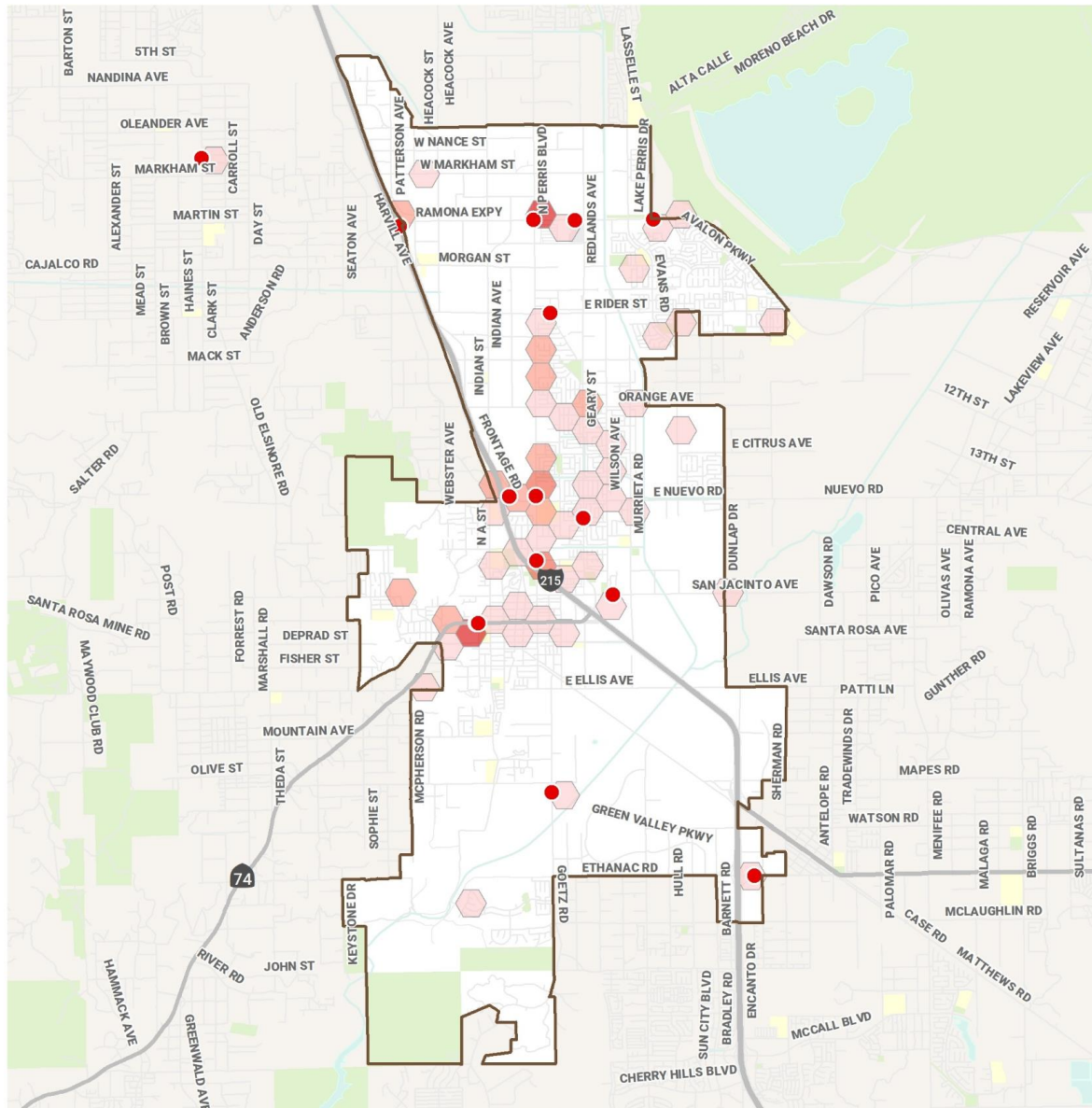
- City Boundary
- School
- Park or Open Space



Sources:
SCAG
UC Berkeley TIMS
OSM
Caltrans

DATA ANALYSIS TOOLS

Safety Barriers PEDESTRIAN COLLISIONS Perris, CA



Collisions per Hexagon (2014 - 2018)

- 1 Collision
- 2 Collisions
- 3 Collisions
- 4 Collisions
- Pedestrian Fatality

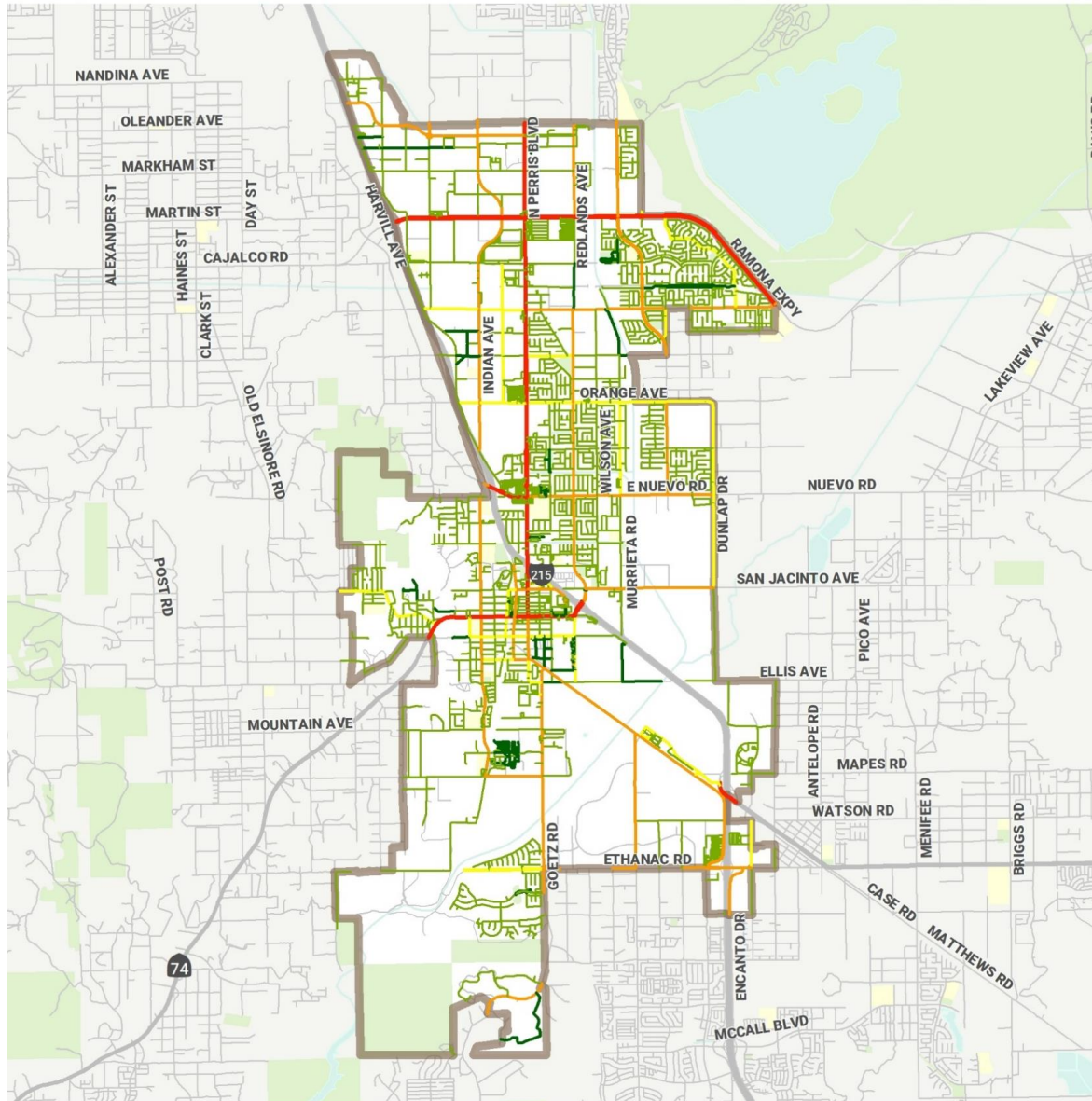
Destinations + Boundaries

- City Boundary
- School
- Park or Open Space



Sources:
SCAG
UC Berkeley TIMS
OSM
Caltrans

DATA ANALYSIS TOOLS



Bicycling Connectivity

LEVEL OF TRAFFIC STRESS

Perris, CA

Bicycling Level of Traffic Stress

- 1 (Less Stressful)
- 1.5
- 2
- 3
- 4 (More Stressful)

Destinations + Boundaries

- City Boundary
- School
- Park or Open Space



Sources:
SCAG
US Census
OSM
Caltrans

DATA ANALYSIS TOOLS

Customized Health Assessment: Healthy Places Index

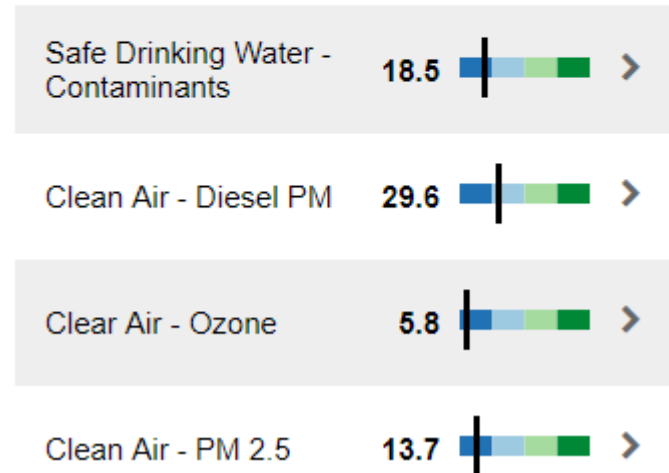
Variables

- Physical Activity
- Safety
- Environment
- Health Equity

Clean Environment ^

This city has healthier clean environment conditions than just **9.7%** of other California cities.

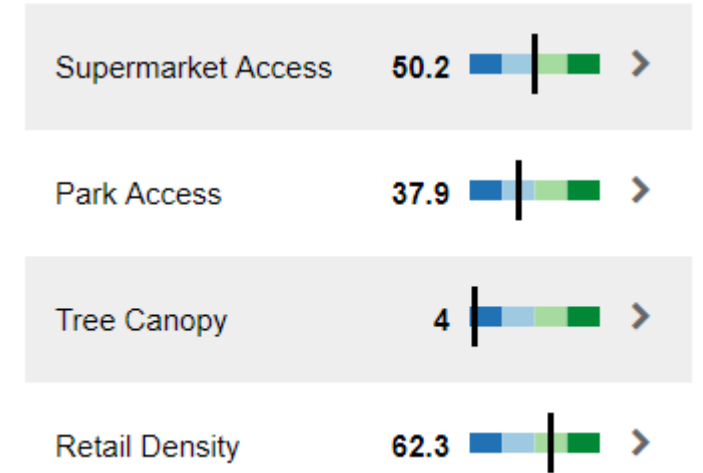
Indicator Percentile Ranking



Neighborhood ^

This city has healthier neighborhood conditions than just **24.9%** of other California cities.

Indicator Percentile Ranking



OUTREACH PLAN

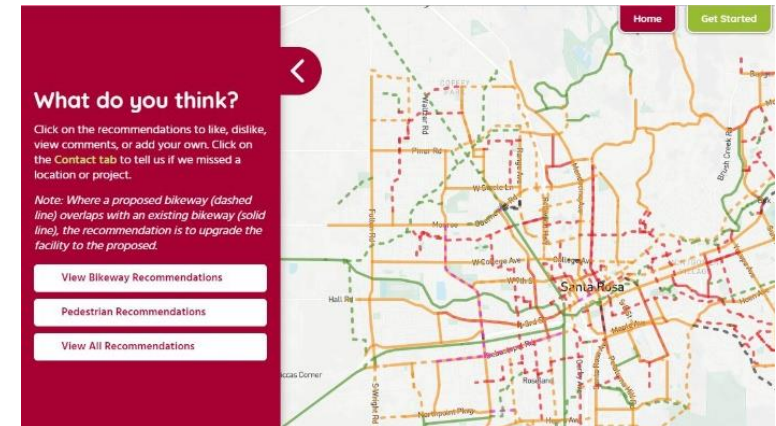
Community Advisory Committees

Go Human Demonstrations

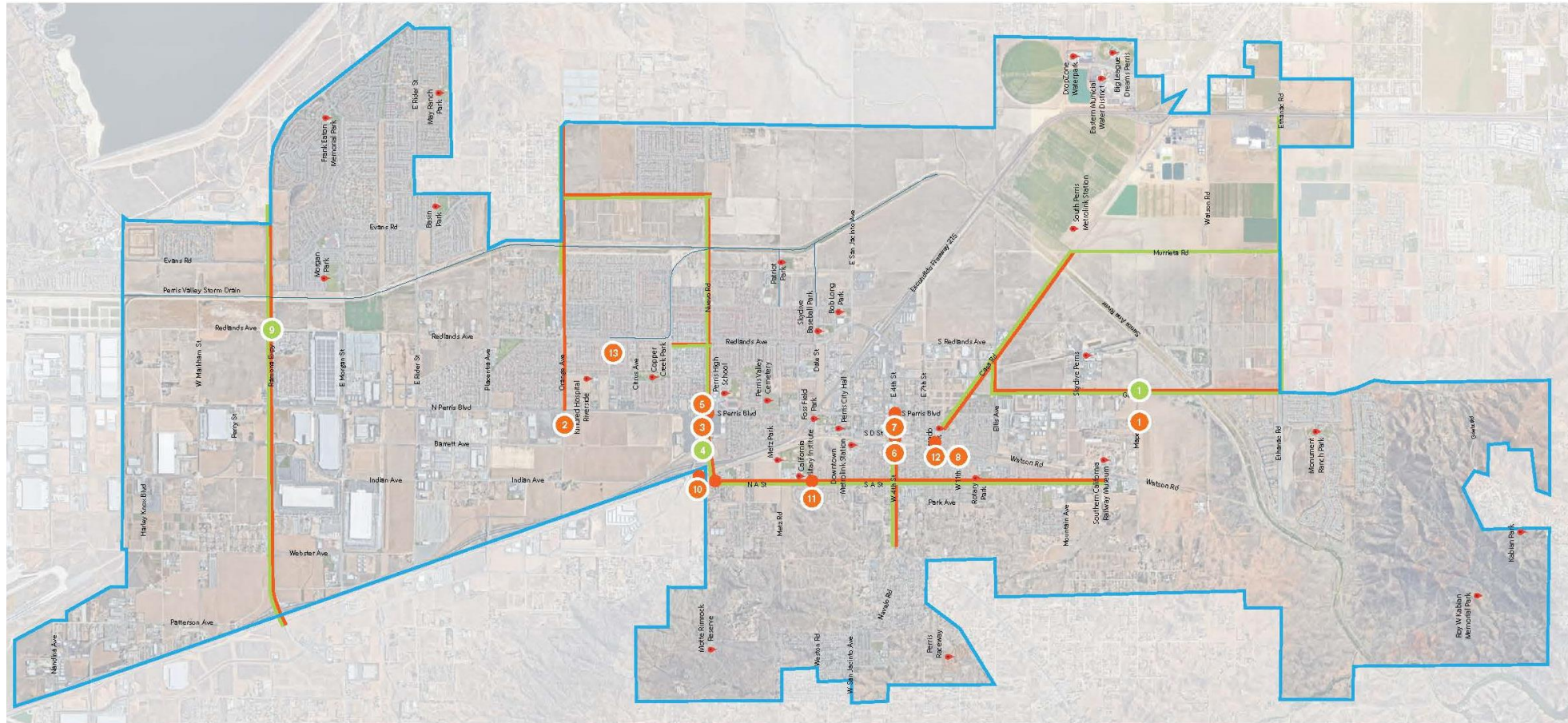
- Training 1: Active Transportation & Tactical Urbanism Primer
- Interactive Art Installation
- Training 2: Share Living Preview Plans; Train Volunteers
- Living Preview
- Curbside Open House

Additional Outreach

- Website and Public Input Tool
- Walking / Biking Tour
- Targeted Outreach



GO HUMAN TRAINING 1



 Perris Boundary

 Pedestrian Improvement Route

 Identified Locations for Pedestrian Improvements

 Bike Improvement Route

 Identified Locations for Bike Improvements

THANK YOU!



Sam Corbett

Alta Planning + Design

SamCorbett@altaplanning.com

213.257.8600

Go Human Updates

Julia Lippe-Klein

Active Transportation and Special Programs

Senior Transportation Planner

September 19, 2019

www.scag.ca.gov

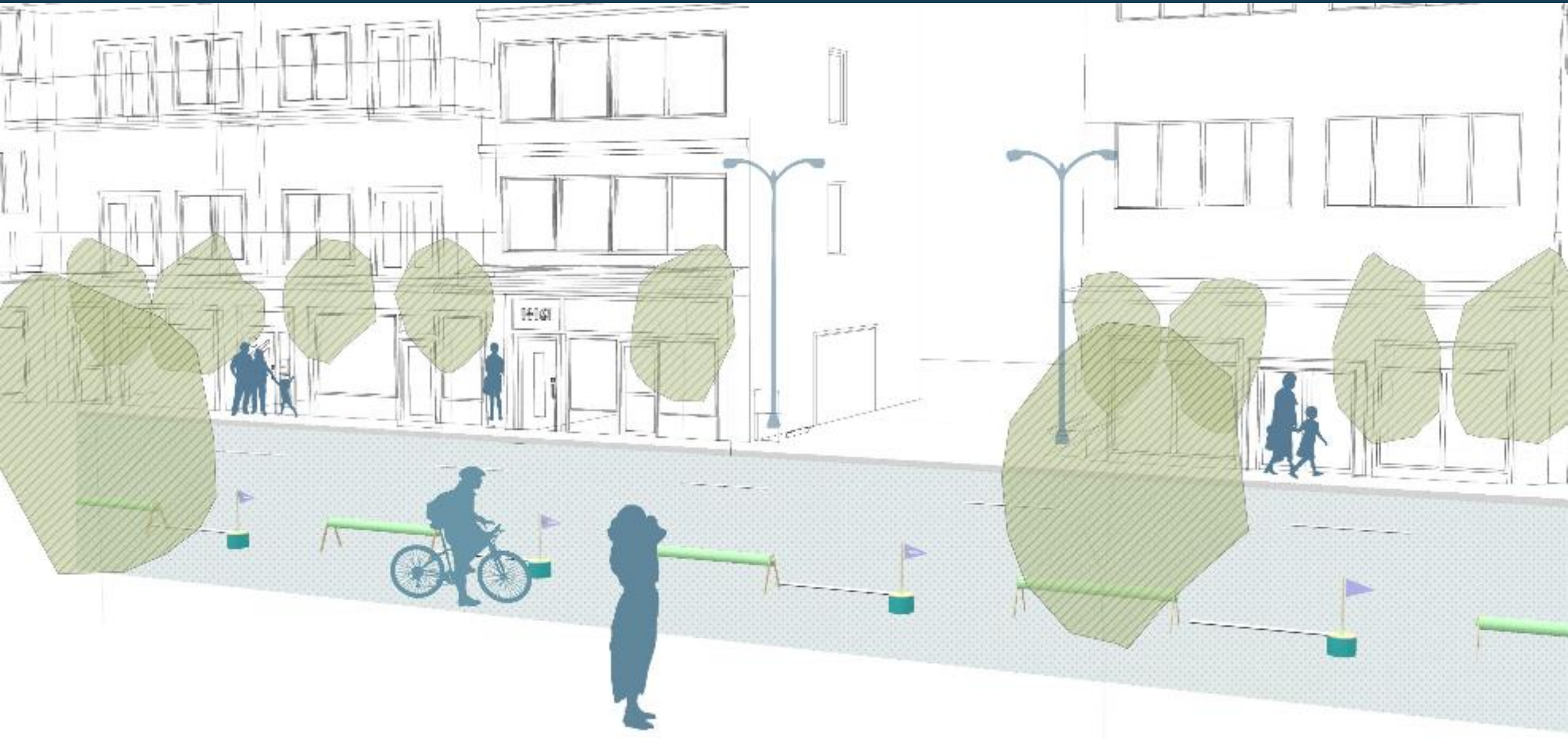


Safety Resources: *Go Human* Kit of Parts

- “Library” of pop-up demonstration materials
- Free resource available to jurisdictions starting in October 2019
- SCAG manages storage in LA County. Transport options currently being explored.
- Toolkit available for easy installation/set up
- Kit includes 5 design treatments to borrow and showcase
- Pair with an existing event to conduct community outreach
- Materials also include survey tool and educational signage



Temporary Demonstration Resources – Kit of Parts



Temporary Demonstration Resources – Kit of Parts



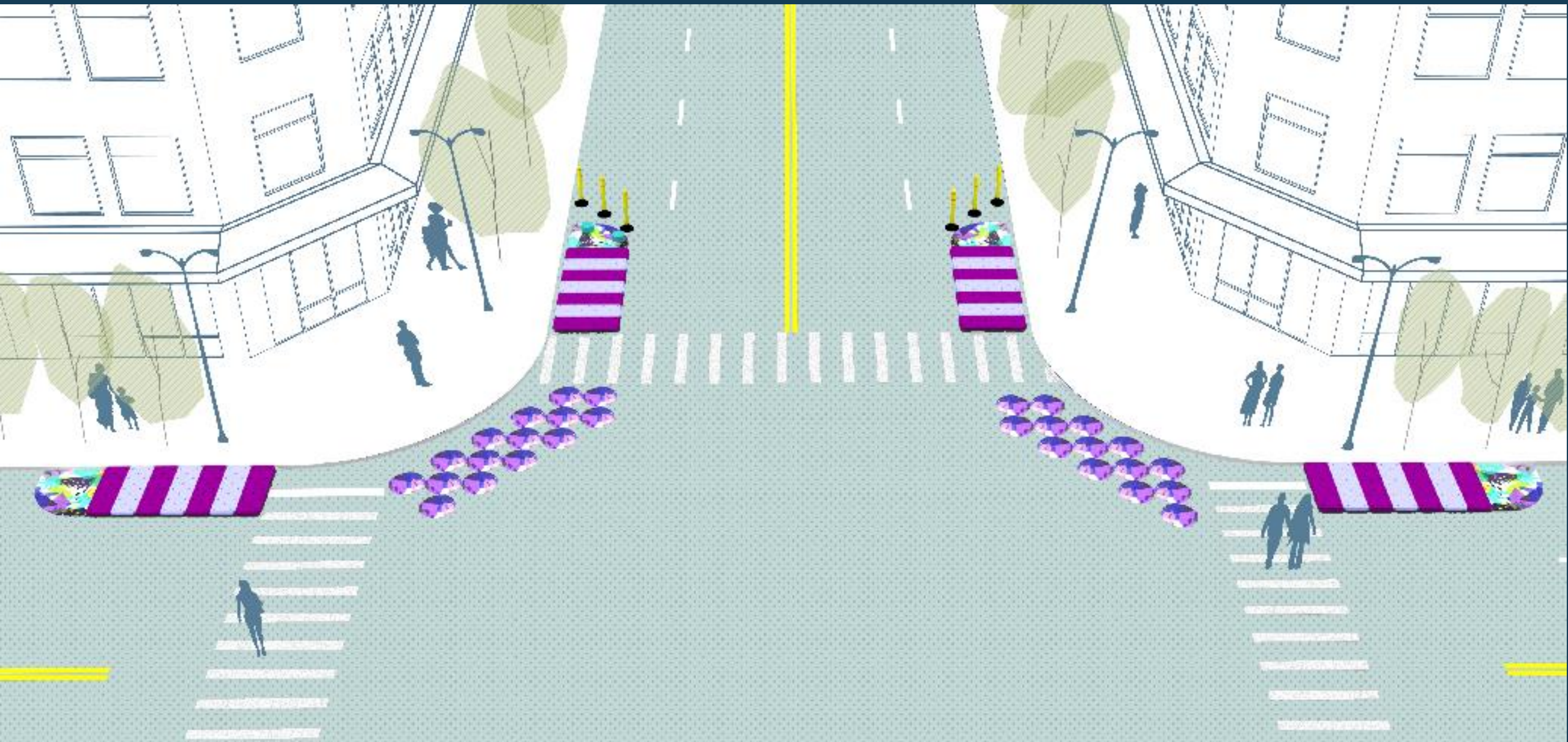
Temporary Demonstration Resources – Kit of Parts



Temporary Demonstration Resources – Kit of Parts



Safety Resources: *Go Human* Kit of Parts



Educational Programming Materials ~ Go Human Challenge



- Go Human Challenge materials enhance community engagement and educational impact
- Modules expand active transportation messaging and highlight sustainability topics
- 5 modules, different themes and interactive activities
- Free to borrow across the region to pair with existing events



Educational Programming Materials ~ Go Human Challenge



CLIMATE RESILIENCY

Activity: Tic-Tac-Toe Ringtoss

TRANSPORTATION SAFETY

Activity: Rolling Dice

ENVIRONMENTAL RESPONSIBILITY

Activity: Fill in-Puzzle

NEW MOBILITY

Activity: Transportation Trivia!

PUBLIC SPACES

Activity: Street Mix

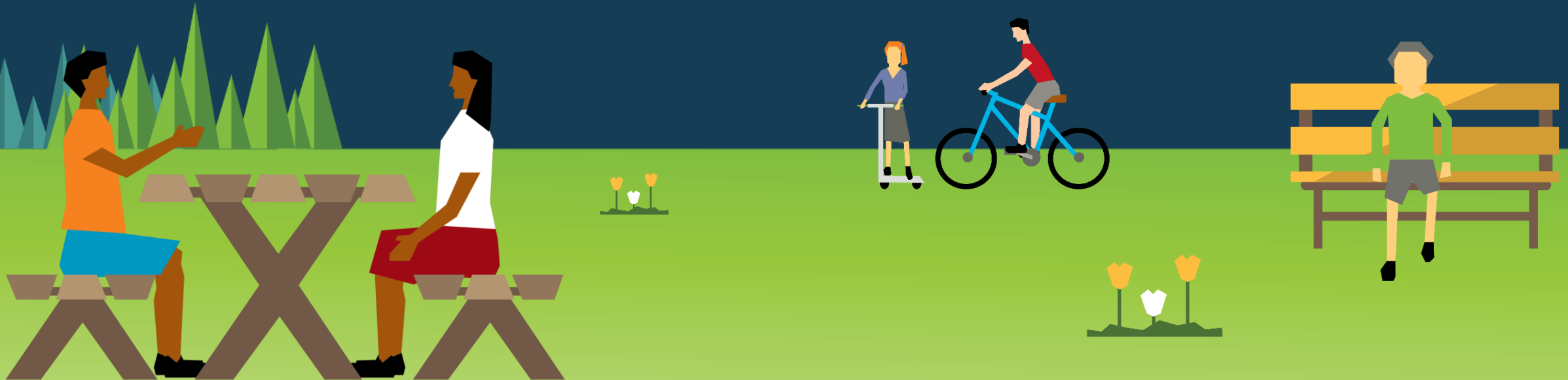


Educational Programming Materials ~ Go Human Challenge



THANK YOU

Lippe-Klein@scag.ca.gov



Stakeholder Needs Discussion

www.scag.ca.gov



Grant-Funded Regional Tools/Initiatives



- Go Human
 - Advertising Campaign
 - Kit-of-Parts
 - Challenge Modules
 - Webinars
- Active Transportation Database
 - Pedestrian and Bicycle Count Repository
 - Count Best-Practice Guidance for Regional Data Consistency
- Disadvantaged Communities Active Transportation Planning Tool
 - Active Transportation Plan Template
 - Review of National Best Practices
 - Outreach and Equity Frameworks

What's Next?



- What other tools/initiatives could help cities, agencies, and CBOs in the SCAG region to:
 - Develop innovative solutions that improve quality of life for Southern Californians
 - Advance policy interests and planning priorities
 - Have better access to robust data
 - Enhance regional collaboration

ATWG Outlook

www.scag.ca.gov



Next Meeting and Announcements

Joint Environmental Justice/Public Health Working Group

- October 17, 2019
- The focus of this meeting will be on information sharing and how we, organizations, agencies and individuals, can work together to achieve regional shared goals of environmental justice and public health.

Active Transportation Working Group

- November 21, 2019

Thanks

Julia Lippe-Klein– Lippe-Klein@scag.ca.gov

Hannah Keyes– Keyes@scag.ca.gov

www.scag.ca.gov

