



Sustainable & Resilient Communities / Natural & Farm Lands Conservation Joint Working Group Meeting

February 16, 2023
3:00pm - 5:00pm

WWW.SCAG.CA.GOV

Land Acknowledgment

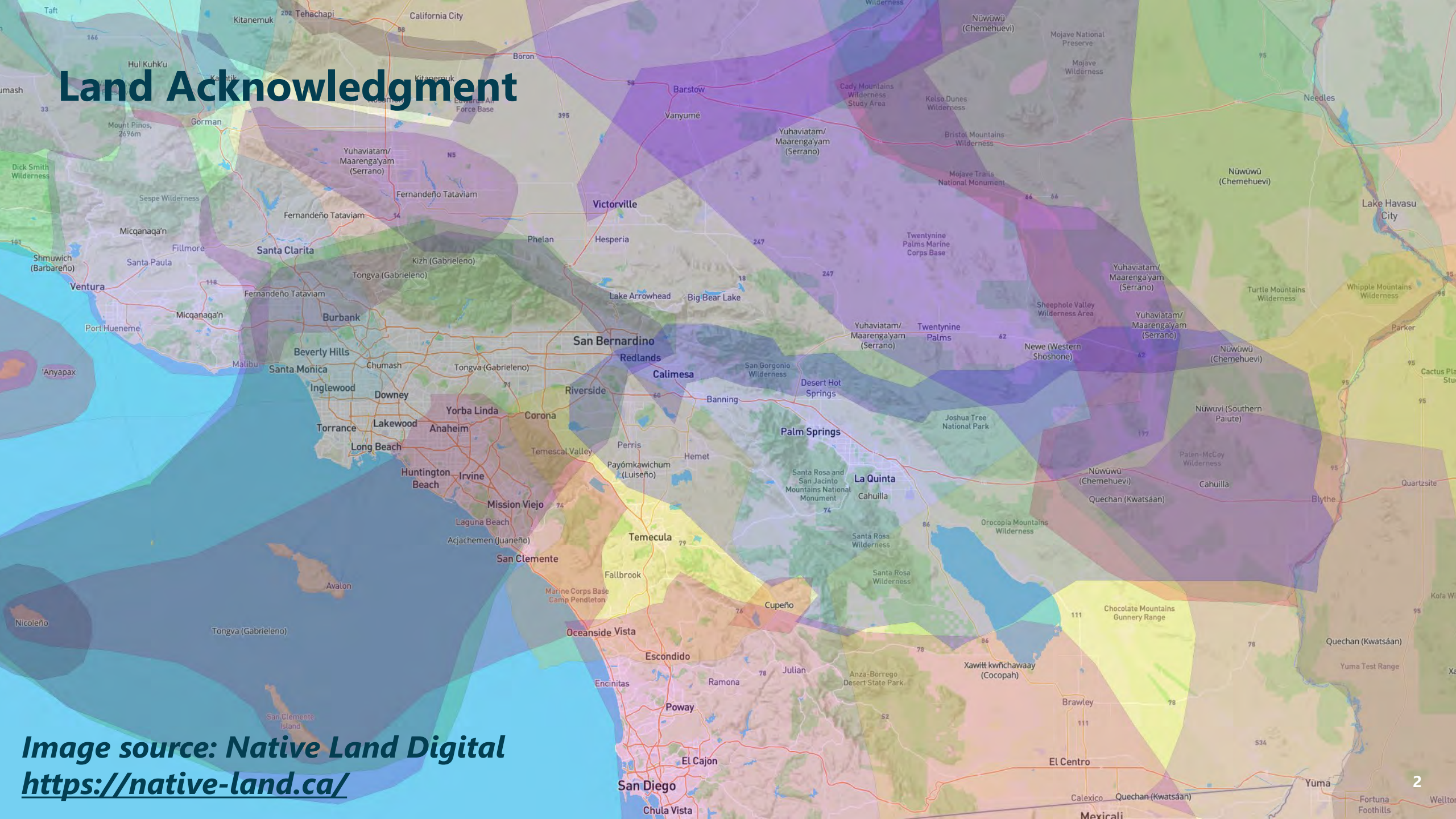


Image source: Native Land Digital
<https://native-land.ca/>

Housekeeping

- Meeting length: 2 hours
- This meeting is being recorded
- All participant lines will be muted
- There will be a Q&A session at the end of each presentation.
- Please use the "raise hand" function or type your question(s) into the chat to be answered during each Q&A segment.
- Materials will be posted to SCAG's Regional Planning Working Group webpage: <https://scag.ca.gov/regional-planning-working-groups>

Agenda

1. Welcome & Introductions

Kim Clark, SCAG

2. Connect SoCal 2024 PEIR Update

Karen Calderon, SCAG

3. RAMP & SoCal Greenprint Update

India Brookover, SCAG

4. Connect SoCal 2024: Resilience & Conservation Subcommittee Update

Kim Clark, SCAG

5. Regional Resilience Framework Update

Anna Van, SCAG

6. Upcoming Grant Opportunities

Jackie Favors, Matt Aldama, Maya Luong, SCAG

7. Connect SoCal 2024 Updates

Leslie Cayton, SCAG

8. Regional Announcements/Adjourn

Kim Clark, SCAG



CONNECT SOCIAL 2024 DRAFT PEIR UPDATE

Karen Calderon (she/her), Senior Regional Planner, SCAG



Connect SoCal 2024 Program Environmental Impact Report (PEIR) Status Update

Joint Sustainable & Resilient Communities/Natural &
Farm Lands Conservation Working Group

February 16, 2023

WWW.SCAG.CA.GOV



Presentation Agenda

- 1 **Overview and Objective**
- 2 **Background**
- 3 **Status Update**
- 4 **Approach to Biological Resources**
- 5 **Conclusion**

Presentation Objective

- Seek early feedback from joint working group on the preliminary approach in time for staff's presentation to SCAG's Energy and Environment Committee, anticipated in April 2023



Connect SoCal 2024

- SCAG is currently developing the 2024-2050 Regional Transportation Plan/Sustainable Communities Strategy (RTP/SCS), referred to as "Connect SoCal 2024", Plan or Project
- Project Location: Imperial, Los Angeles, Orange, Riverside, San Bernardino, and Ventura
- Updated every four years
- Must meet federal and state requirements



Connect SoCal 2024 PEIR and SCAG's Role

- The California Environmental Quality Act (CEQA) requires SCAG to evaluate and disclose potential environmental impacts of the Project prior to approval
- SCAG is the CEQA Lead Agency for the Connect SoCal 2024
- PEIR includes a region-wide, first-tier, programmatic level environmental assessment

Notice of Preparation (NOP) of a Draft PEIR for Connect SoCal 2024 (State Clearinghouse No.: 2022100337)

- SCAG [released the NOP](#) for public review and comments for a required 30-day public review and comment period:

10/17/2022 – 11/16/2022

- Sought feedback on the scope and contents to be considered in the Draft PEIR
- Two virtual public scoping meetings on November 9 and 10, 2022.



NOTICE OF PREPARATION

TO: Interested Agencies, Organizations, and Individuals

SUBJECT: Notice of Preparation of a Draft Program Environmental Impact Report for Connect SoCal 2024 (2024-2050 Regional Transportation Plan/Sustainable Communities Strategy) (State Clearinghouse No. TBD)

DATE: October 17, 2022

LEAD AGENCY: Southern California Association of Governments
900 Wilshire Blvd, Suite 1700
Los Angeles, California 90017

The Southern California Association of Governments (SCAG), as Lead Agency, is publishing this Notice of Preparation (NOP) to prepare a Draft Program Environmental Impact Report (Draft PEIR) in accordance with the California Environmental Quality Act (CEQA) for the proposed 2024-2050 Regional Transportation Plan and Sustainable Communities Strategy (RTP/SCS), referred to alternatively as "2024 RTP/SCS", "Connect SoCal 2024", "Plan", or "Project".

To ensure full consideration of environmental issues with potential significant adverse impacts when preparing the Draft PEIR, **all written comments on the NOP must be received within thirty (30) days of the start of the required 30-day public review and comment period, which begins October 17, 2022, and ends November 16, 2022 at 5:00 PM (PST).**

Two (2) virtual public scoping meetings for the NOP, each providing the same information, will be held on **Wednesday, November 9, 2022, from 6:00 PM to 8:00 PM**, and **Thursday, November 10, 2022, from 10:00 AM to 12:00 PM**. The meetings will be held in an online format using Zoom. You may join, view, and participate in the meetings by using the Zoom application, by your web browser, or by phone. Information for the webcast is provided below:

<https://scag.zoom.us/j/81023287939>
Dial by location: +1 669 900 6833 US Toll or +1 669 444 9171 US Toll
Meeting ID: 810 2328 7939

Please send your comments on the NOP to Ms. Karen Calderon, Senior Regional Planner, either electronically to: ConnectSoCalPEIR@scag.ca.gov or by mail to the address shown above. If you wish to be placed on the mailing list to receive CEQA notices regarding the PEIR for the Plan, need additional information, or require special accommodations or translation services for a scoping meeting, please email Ms. Karen Calderon at least 72 hours prior to the scoping meeting or call (213) 236-1983 so that SCAG has sufficient time to make arrangements.

Footnote: SCAG. Available at: <https://scag.ca.gov/ceqa>

Summary of NOP Comments Received

- 16 comment letters and seven verbal comments at the scoping meetings:
 - 50 individual PEIR comments
 - 30 individual Plan comments
- The NOP and comments received will be included in an appendix to the Draft PEIR document.

Breakdown of NOP Comments by Topic Areas

	Topic Areas	Number
PEIR	Project Description	7
	Air Quality	2
	Biological Resources	1
	Cultural Resources	2
	Greenhouse Gas Emissions	4
	Hydrology and Water Quality	1
	Population and Housing	3
	Recreation	3
	Transportation	4
	Tribal Cultural Resources	2
	Utilities and Service Systems	2
	Wildfire	1
	Mitigation Measures	7
	Alternatives	5
	PEIR Development Process	4
	Findings of Fact/Statement of Overriding Considerations	1
Plan (Connect SoCal 2024)	Plan Requirements	2
	Plan Development Process	3
	Plan Goals and Performance Measures	4
	Transportation Planning	5
	Transportation Conformity	2
	Forecasted Regional Development Pattern	8
	Climate and Resilience	4
Data	2	

Footnote: SCAG staff report to EEC. February 2, 2023. Available at: https://scag.ca.gov/sites/main/files/file-attachments/eec020223fullpacket.pdf?utm_source=SCAG+Community&utm_campaign=d1370cbe5a-AGENDAS_2022_07_01_COPY_01&utm_medium=email&utm_term=0_d8c0406cae-d1370cbe5a-1407894369

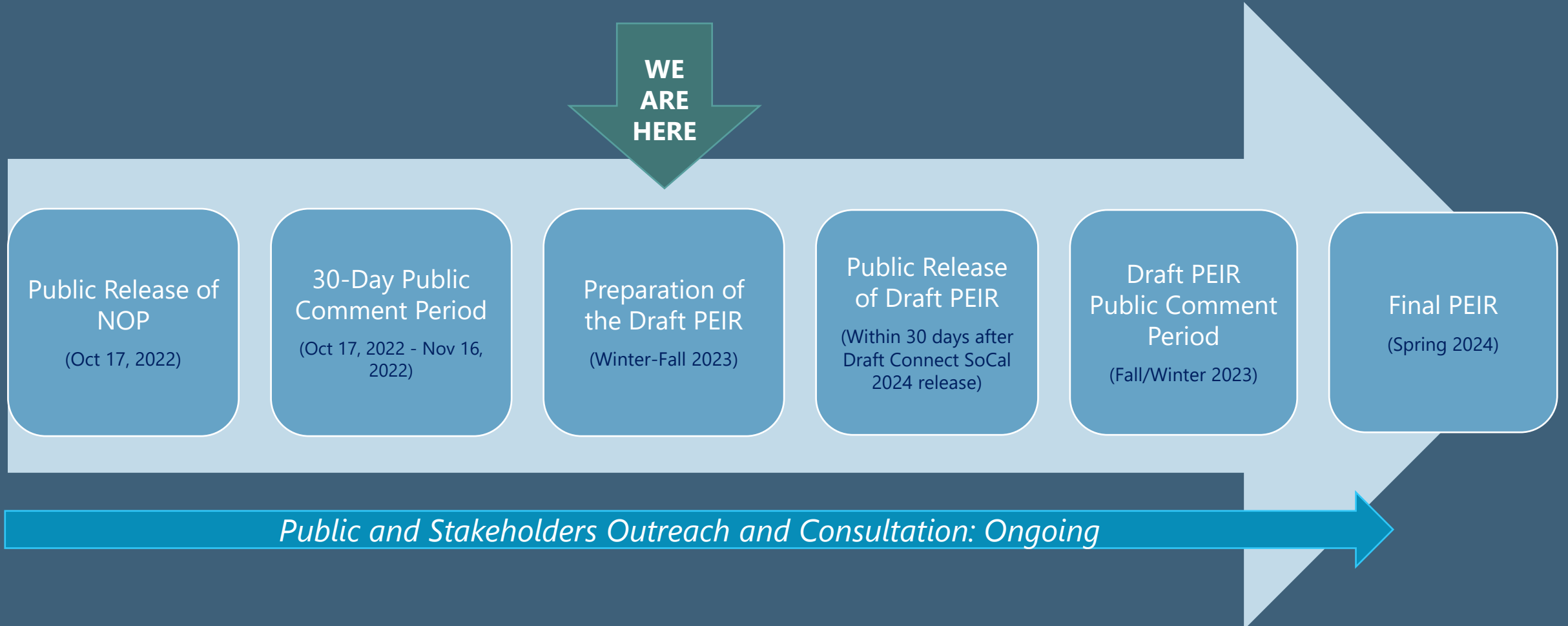
Scope of Environmental Effects

- Aesthetics
- Agriculture and Forestry Resources
- Air Quality
- Biological Resources
- Cultural Resources
- Energy
- Geology and Soils
- Greenhouse Gas Emissions
- Hazards and Hazardous Materials
- Hydrology and Water Quality
- Land Use and Planning
- Mineral Resources
- Noise
- Population and Housing
- Public Services
- Recreation
- Transportation
- Tribal Cultural Resources
- Utilities and Service Systems
- Wildfire

Key Features

- Discuss Plan components that reduce impacts
 - Through Connect SoCal 2024 Goals & Vision, Policy Framework, and Performance Measures
- Enhance interdisciplinary approach to analyzing environmental impacts
 - Crossover between resource areas
- Enhance clarity and succinctness, where feasible and appropriate
 - Minimize duplication for a more reader friendly document while maintaining informative value of PEIR to decision-maker and the public

Next Steps





APPROACH TO BIOLOGICAL RESOURCES ANALYSIS

Connect SoCal 2024 PEIR Process

- PEIR process begins with NOP, Scoping Meeting and input from Responsible Agencies and Interested Parties.
- Consultants update Existing Setting and Regulatory Framework (now)
- SCAG Planners prepare Plan and provide updates to EIR Team
- EIR Team provides input to Planning Staff as needed
- Draft Plan is completed (all parts are relevant to biological resources):
 - Transportation Projects
 - Land use Growth Pattern
 - Land Use and Transportation Policies
- Impact Analysis (summer)
- Mitigation Identification (summer/fall)

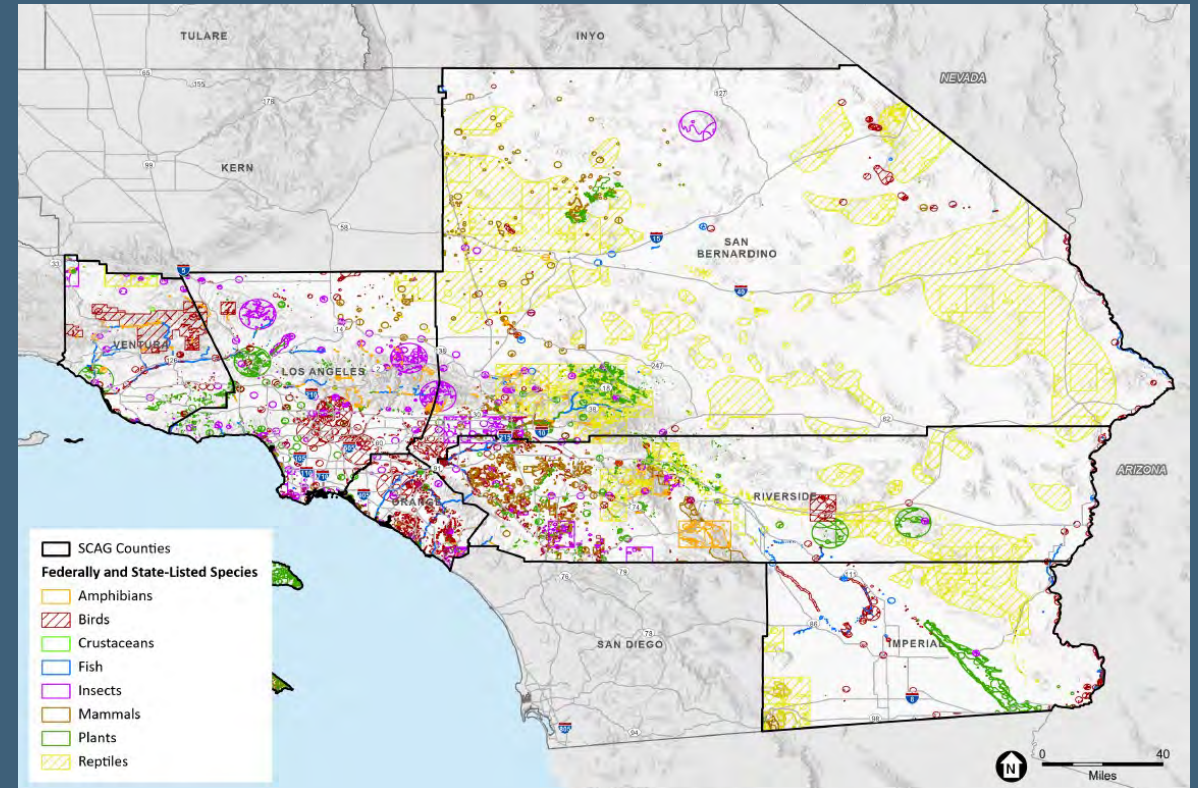
Biological Resources Scoping Results and Other Considerations

- Scoping process for Connect SoCal 2024 resulted in extensive input with respect to Biological Resources
 - CDFW – detailed recommendations for areas of analysis and conceptual mitigation: wildlife corridors and connectivity; sensitive habitats and open space; special status and sensitive species; mountain lion; gnatcatcher; Crotch's bumblebee; special status bird species, burrowing owl; loss of bird and raptor nesting habitat; bats; HCPs/NCCPs.
 - CCC – concerns with respect to coastal transportation projects and adaptive measures to address sea level rise -- impacts on coastal environment and habitats
- Comments from the Connect SoCal 2020 PEIR process
 - Mountain lion and Western Joshua Tree changing status and potential impacts
 - Nitrogen deposition and impact on non-native and native species



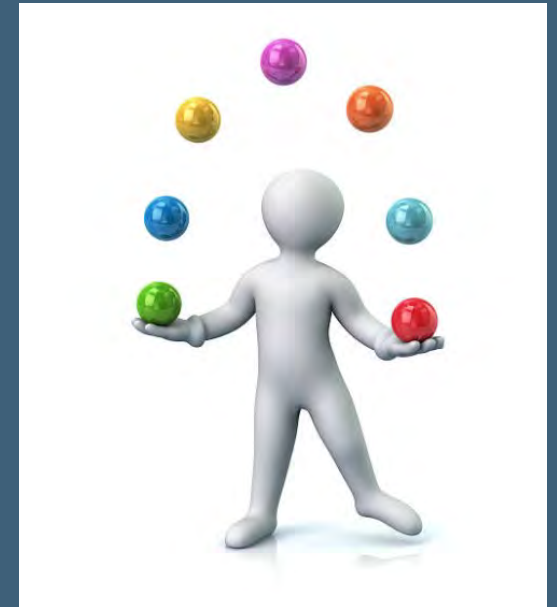
It's a Big Complicated Region

- Six counties - 38,000 square miles
- 191 cities
- Five USDA Ecological Sections
- ~5.5 million acres of critical habitat
- ~298 federally and/or state listed species
- Six major climate types
- 150 miles of coastline
- Elevations of 0 to 10,000 feet above MSL
- Exceptionally diverse biological communities



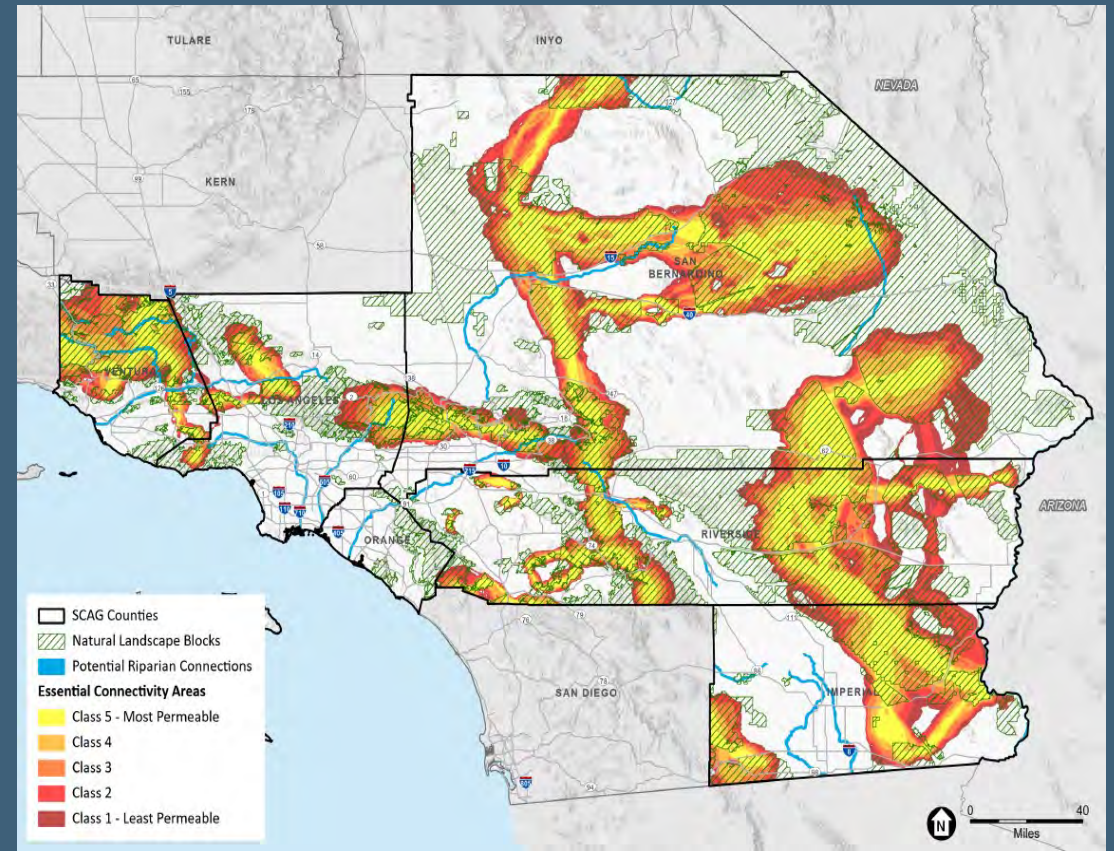
It's a Big Complicated Plan

- Horizon year is 2050
- Numerous Transportation Projects of all types and locations (3,105 in 2020)
 - Conceptual in detail and/or with their own environmental process
- Development pattern – focused on infill but potential for development at the wildland interface
 - Must accommodate regional housing need
 - Local input is important
- Transportation and land use policies
 - General in nature
- Provides for expansion of forecast population and employment
- Provides for expansion of ports and airports
- Financially constrained (\$639 billion)
- Considers state housing goals, resource areas and farmland
- Must comply with Clean Air Act and SB 375 and associated GHG Targets
- Jurisdictions maintain project decision-making authority



Biological Issues (CEQA)

- Candidate, sensitive and special status species
- Riparian habitat and other sensitive natural communities (i.e., CDFW designated sensitive natural communities)
- Federally and state protected wetlands and waters
- Wildlife corridors and habitat connectivity
- Local policies protecting biological resources (e.g., tree ordinances)
- HCPs, NCCPs or other approved local, regional or State Habitat Conservation Plans



Interdisciplinary Approach to Analysis

- Issues addressed in other PEIR sections are relevant to Biological Resources:
 - Aesthetics (nighttime lighting)
 - Air quality (criteria pollutant emissions, nitrogen deposition)
 - Hydrology (impact on riparian area and wetlands)
 - Land use, recreation (wildland interface – human intrusion)
 - Noise (nest disturbance)
- Issues either addressed in the Biological Resources section or summarized with a cross reference to where to find additional analysis in the PEIR.

Literature and Data Sources

- USFWS Critical Habitat Mapper
- USFWS Environmental Conservation Online System (ECOS), including Information for Planning and Consultation (IPaC)
- California Natural Diversity Data Base (CNDDDB)
- Locally important species lists
- California Native Plant Society (CNPS)'s Online Inventory of Rare Plants
- California Essential Habitat Connectivity
- USGS National Hydrography Dataset (NHD) and USFWS National Wetlands Inventory (NWI)
- CDFW Natural Community Conservation Planning (NCCP)
- Draft Regional Conservation Investment Strategies Program Guidelines
- Local General Plans and Ordinances



Available Information

- Sensitive plant and wildlife species and their habitats
 - Federally and state listed species, and other special-status species
 - Locally important species
- U.S. Fish and Wildlife Service (USFW)-designated critical habitat
- Riparian habitats
- Sensitive natural (plant) communities
- Federally and state protected wetlands and waterways
- Wildlife movement corridors
- Habitat conservation plans (HCPs)/Natural community conservation plans (NCCPs)
- Regional conservation investment strategies
- Local policies/ordinances regarding protected species

Approach to Impact Analysis

- Programmatic analysis – consider and programmatically evaluate multiple types of projects in a variety of conditions from a regional perspective. Cannot evaluate every potential combination of type of project and sensitive resources.
- Direct (i.e., result of plan) and indirect effects (i.e., delayed foreseeable impacts e.g., induced growth, infrastructure).
- Cumulative impacts – at this scale, only other regional projects are cumulative projects – development is all considered as part of implementation of the Plan itself.

**Spoiler Alert! Analyses conservatively identify significant adverse impacts after mitigation because of all the unforeseeable circumstances.*

Analysis Methods

- GIS mapping of transportation projects
 - Biological resources and publicly-owned wildlife/waterfowl refuges within 500 feet of a selection of transportation projects.
 - Broad qualitative discussion of project types and potential impacts.
- Development/growth pattern
 - Broad qualitative evaluation based on the land use development pattern -- all potential types and location of development and potential interaction with biological resources.
- RTP/SCS policies
 - Development pattern, emissions and impact on regional resources.



THANK YOU!

For more information, please visit: <https://scag.ca.gov/peir>



REGIONAL ADVANCE MITIGATION PROGRAM & SOCAL GREENPRINT UPDATE

India Brookover (she/her), Senior Regional Planner, SCAG



SoCal Greenprint & RAMP Update

February 16, 2023

WWW.SCAG.CA.GOV



Update: SCAG's RAMP Policy Framework

RAMP-Advisory Task Group (RAMP) ATG concluded in November 2022 with RAMP Policy Framework and White Paper

On February 2, SCAG's Regional Council approved the RAMP Policy Framework and White Paper

SCAG's RAMP Policy Framework

SCAG's Connect SoCal plan identifies **the need for billions of dollars of investment** in transportation, housing, energy and water projects **to support the region's communities and economy.**

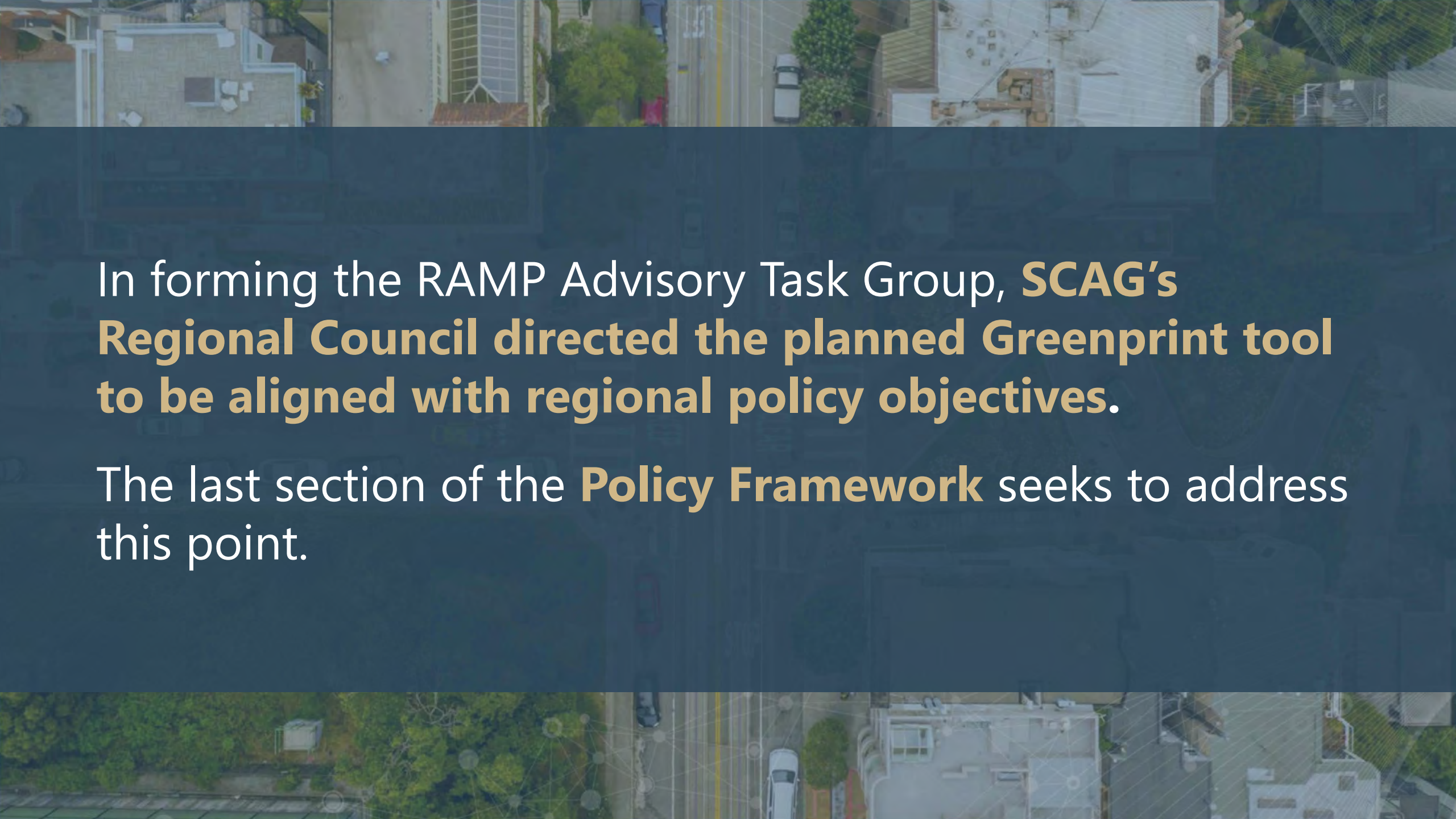
California law requires most infrastructure projects, including those that become eligible for funding under Connect SoCal, to **identify environmental impacts and ways to reduce them.** However, this mitigation can be expensive and delay projects.

RAMP Policy Framework Regional Goals

- 1. Facilitate infrastructure development** and associated co-benefits, such as job creation, maximizing taxpayer funds, supporting the building of housing;
- 2. Expedite project delivery;**
- 3. Improve predictability** for project funding;
- 4. Examine potential environmental impacts** at the early stages of project development to help expedite the CEQA process;

RAMP Policy Framework Regional Goals *(continued)*

- 5. Reduce costs, risks and permitting time** for responsible development;
- 6. Improve and reinforce** regulatory agency partnerships;
- 7. Balance future growth and economic development** with conservation and resilience; and
- 8. Achieve meaningful, regional-scale conservation outcomes and co-benefits**, including but not limited to landscape and community resilience, improved water and air quality, wildlife corridors and connectivity, and recreation opportunities.

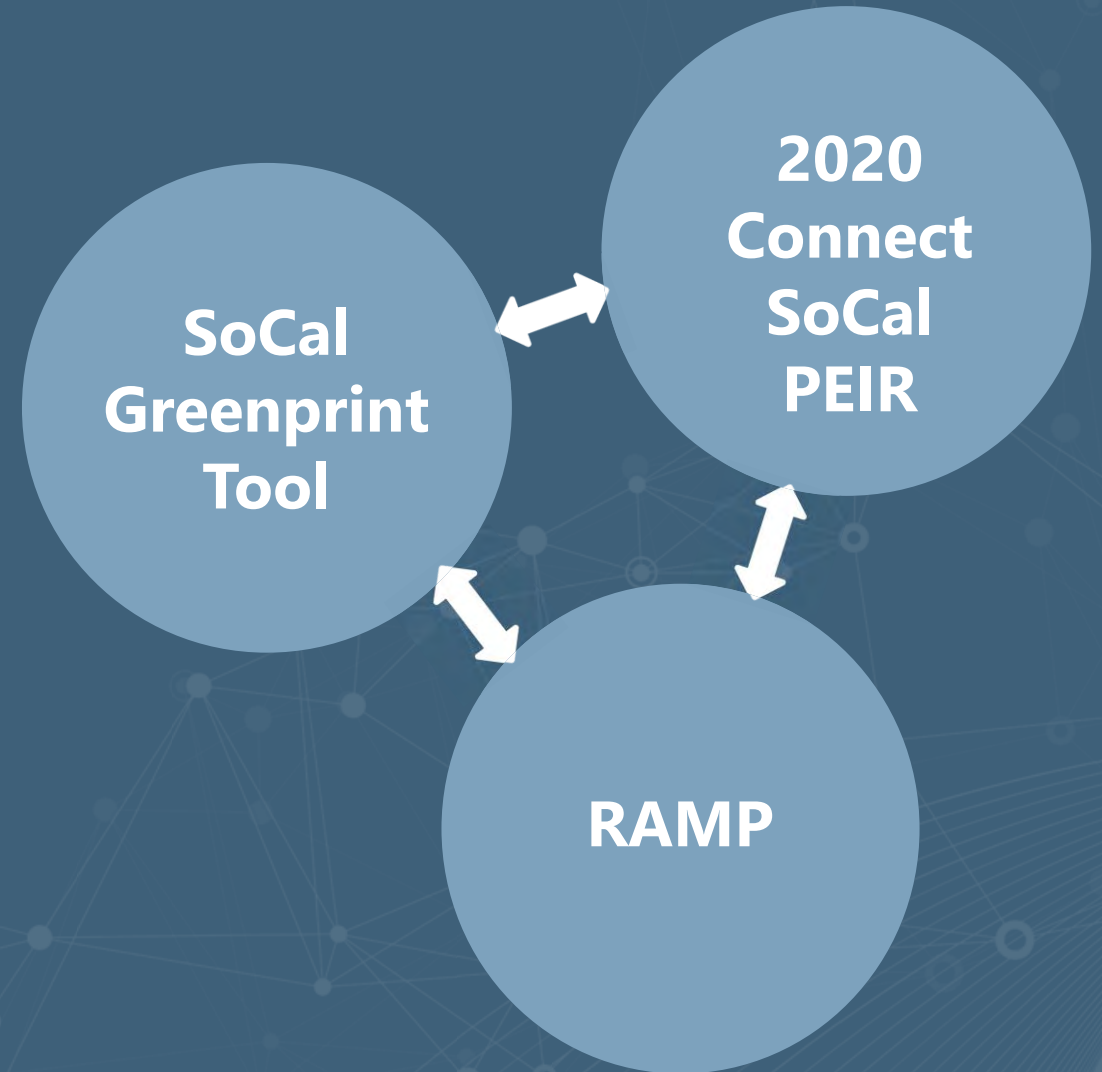


In forming the RAMP Advisory Task Group, **SCAG's Regional Council** directed the planned **Greenprint tool** to be aligned with regional policy objectives.

The last section of the **Policy Framework** seeks to address this point.

How are the SoCal Greenprint and RAMP related?

The SoCal Greenprint is a planned web-based tool, which will complement SCAG's RAMP Policy Framework, with data and scenario visualizations, **primarily intended to support project lead agencies** in pursuing RAMP or other environmental mitigations.



Establishment of a **Technical Advisory Committee**

Following approval of the RAMP Policy Framework by the Regional Council, SCAG will establish a Technical Advisory Committee to advise on:

**Data
Policies &
User
Guidelines**

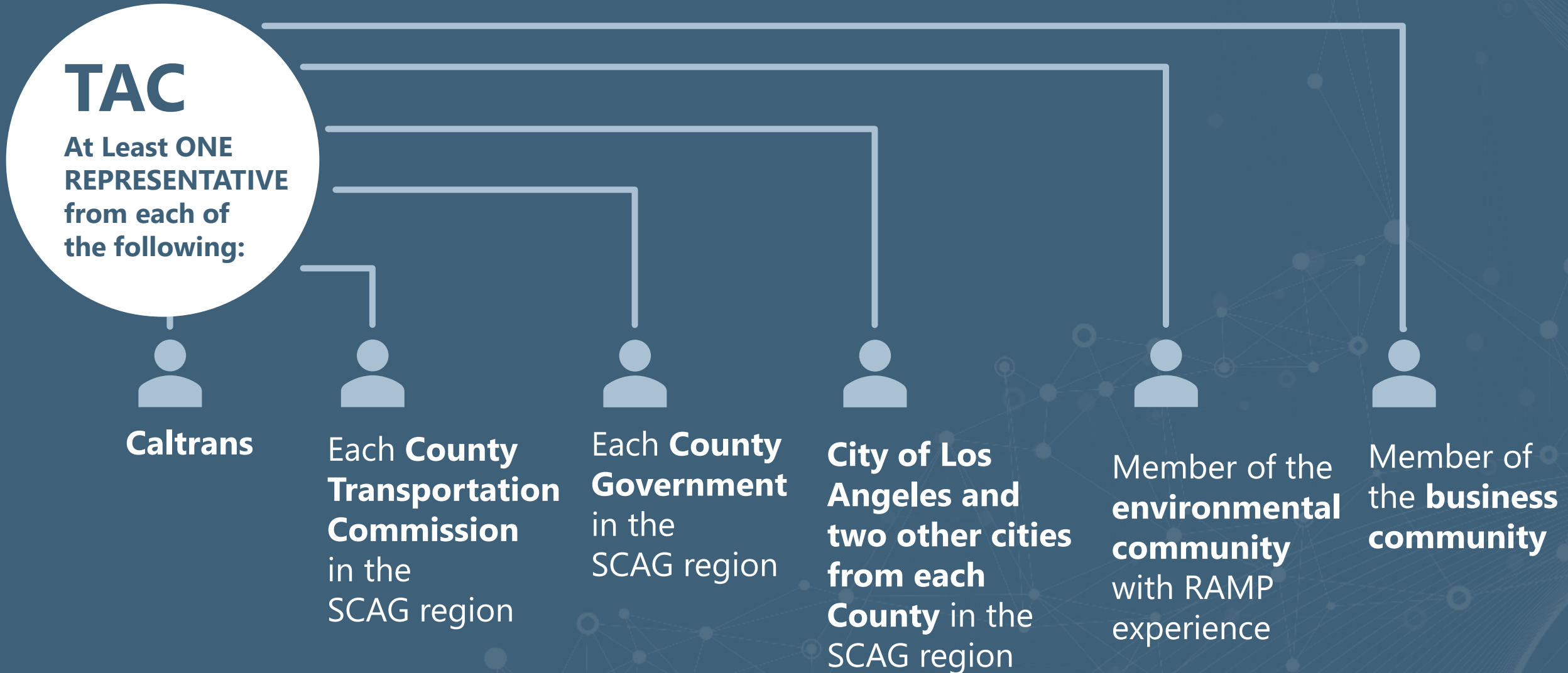
**SoCal
Greenprint
Tool's Data
Governance
Standards**

**Data
Selection
Criteria**

**Process to
Resolve Potential
Divergent
Perspectives on
SoCal Greenprint
Tool Data**

**Data
Parameters**

Proposed Structure of the Technical Advisory Committee



Proposed TAC Solicitation Process

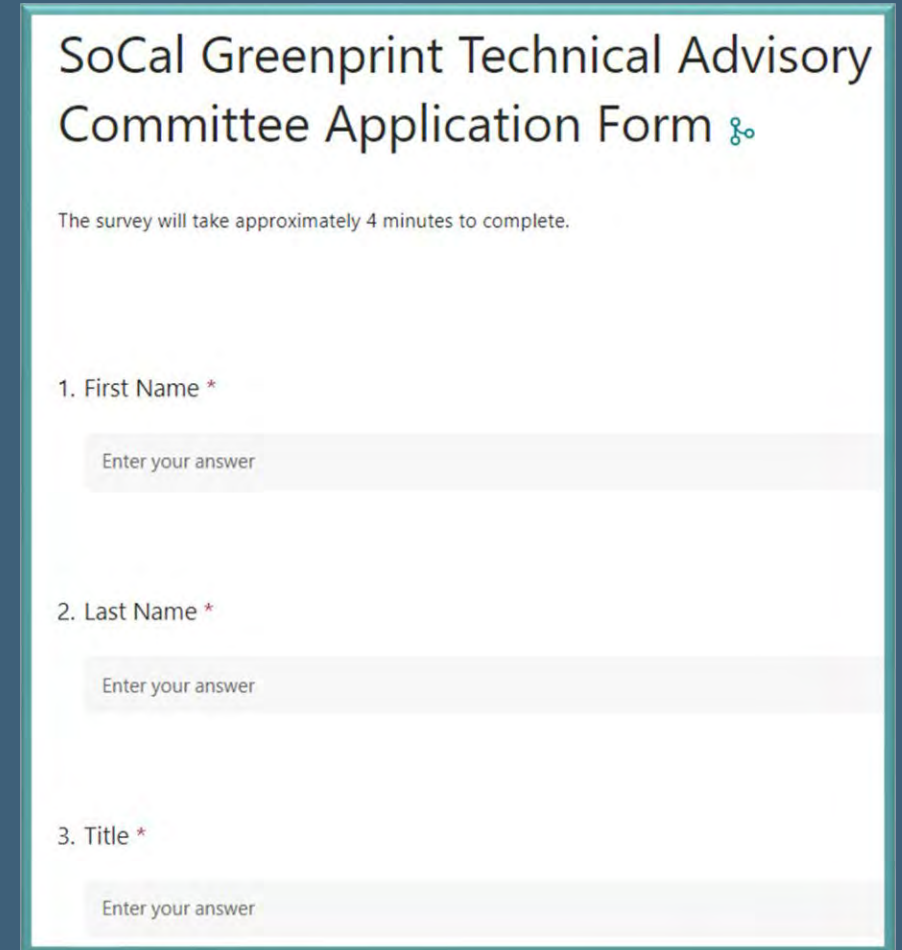
- For city representatives, other than the City of Los Angeles, Subregions will recommend members
- For counties with more than one Subregion, SCAG will ask those entities to come to consensus for their respective recommended members
- SCAG will send formal invitation letters to public agency leads including:
 - Caltrans District Directors
 - County Transportation Commission CEOs
 - Subregional Executive Directors
 - County Administrators
 - City of Los Angeles Planning Director
- Engage with GLUE Council to solicit applicants for Business Rep
- Engage with the Natural and Farm Lands Conservation Regional Planning Working Group to solicit applicants for Environmental Rep


TAC Solicitation Process

- Seeking input from Natural & Farm Lands Conservation Working Group on Environmental Rep
- Stay tuned for email invitation and web form for applicants
- Help us spread the word about recruitment!

TAC Application (*Microsoft Form*)

- All potential TAC members will be required to fill out a short application form to help gauge baseline understanding:
 - Experience developing and/or reviewing Environmental Impact Reports (EIRs)
 - Previous work in Regional Advance Mitigation
 - Experience using GIS and analyzing geographic data
- Applicants will need to acknowledge Brown Act consistency actions



SoCal Greenprint Technical Advisory Committee Application Form 

The survey will take approximately 4 minutes to complete.

1. First Name *

Enter your answer

2. Last Name *

Enter your answer

3. Title *

Enter your answer

Timeline of this Effort

February 2, 2023

Regional Council approved the Regional Advance Mitigation Program (RAMP) Policy Framework and White Paper



EARLY 2023

Formation of the TAC, Relaunch of Greenprint tool development



SPRING 2023

First convening of the SoCal Greenprint TAC

**SPRING –
SUMMER 2023**

3 half-day TAC workshops on a monthly basis





THANK YOU!

For more information, please visit:

www.scag.ca.gov/greenprint

www.scag.ca.gov/ramp-atg



REGIONAL RESILIENCE FRAMEWORK

Anna Van (she/her), Associate Regional Planner, SCAG

Regional Resilience Framework Update

Sustainable & Resilient Communities Working Group and
Natural & Farm Lands Conservation Working Group
February 16, 2023



WWW.SCAG.CA.GOV

Agenda

1. Project Update

- Tribal and Community-Based Organizations (CBO) Outreach
- Shocks & Stressors Matrix and Indicators

2. Next Steps

3. Questions/Discussion



PROJECT UPDATE

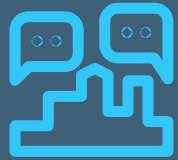
Project Timeline

Workstream	Q3 2022	Q4 2022	Q1 2023	Q2 2023	Q3 2023	Q4 2023	Q1 2024
Committee & Working Group Outreach	Active	Active	Active	Active	Active	Active	Completed
Resilience Level Setting and CBO Interviews	Active	Completed	Completed	Completed	Completed	Completed	Completed
Resilience Shocks & Stressors	Completed	Active	Active	Completed	Completed	Completed	Completed
Exploratory Scenario Planning	Completed	Completed	Active	Active	Active	Completed	Completed
Regional Resilience Toolkit	Completed	Completed	Completed	Completed	Active	Active	Active



We are here

CBO Outreach: Interviews



Purpose of interviews

- Understand CBOs' definition of resilience and lived experiences
- Ground-truth lived experiences with disruptions, shocks and stressors
- Community groups and core project team listen and learn from each other

Key topics

- Understanding risk and resilience
- Community response
- Communicating with the community

Format

- Focus groups of 1-4 participants
- Honorarium provided to CBOs
- At least 1 CBO from each county
- At least 1 Tribal government

CBO Outreach: Organizations

Who have we spoken to?

CBO/Tribe	County	Expertise
Comite Civico del Valle	IM	Social Justice, Health
LAC+USC Medical Center Foundation	LA	Health
Housing for All	OC	Housing
Center for Community Action and Environmental Justice (CCA EJ)	RV/SB	Environmental Justice
Soboba Band of Luiseno Indians	RV/SB	Tribal Nation
Central Coast Alliance United for a Sustainable Economy (CAUSE)	VN	Economic Development
Inland Coalition for Immigrant Justice (IC4IJ)	RV/SB	Social Justice

CBO Outreach: Sample CBO-Identified Shocks and Stressors



Air pollution, asthma, & wildfire smoke



Healthcare access



Food insecurity



Digital divide/broadband access



Power outages (PSPS)



Linguistic/social isolation

CBO Outreach: Sample Findings

- **Schools** provide critical support, services, shelter, and trusted communications during disruptions
 - School shutdowns lead to food insecurity
- Community often unsure where to seek resources
 - Possible solution: a **community hub** offering multiple services
- Best practices for communications (in appropriate languages)
 - Faith-based organizations and trusted CBOs
 - Face-to-face communications (especially for seniors)
 - Social media
 - Texting (not email)

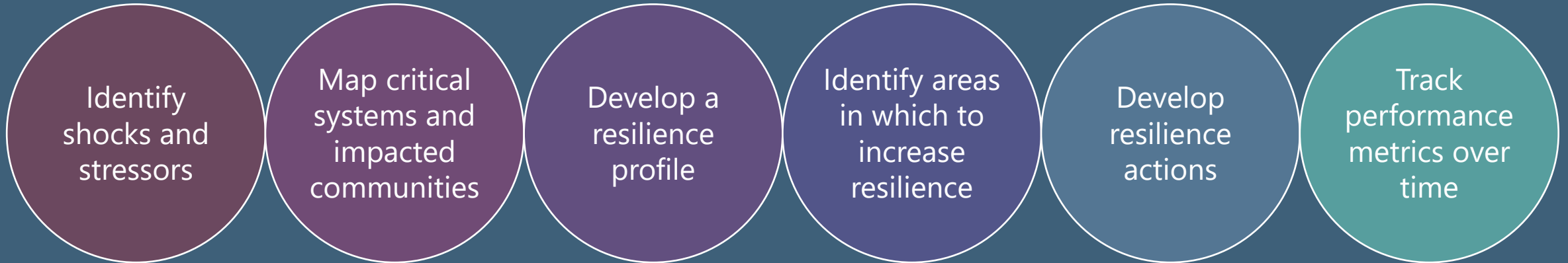


Matrix of Shocks, Stressors, and Resilience Indicators

- **Builds on previous, climate-focused efforts:**
 - Expanded to include natural, built, social, and economic resilience to multiple shocks and stressors
- Research additional **resilience focus areas**
- Incorporate **community input** about resilience, shocks, and stressors
- Develop **indicators** to measure resilience

Shocks & Stressors Matrix

The Shocks & Stressors Matrix provides a starting point for jurisdictions to build their resilience.



Flow Chart: Shocks, Stressors and Resilience Indicators

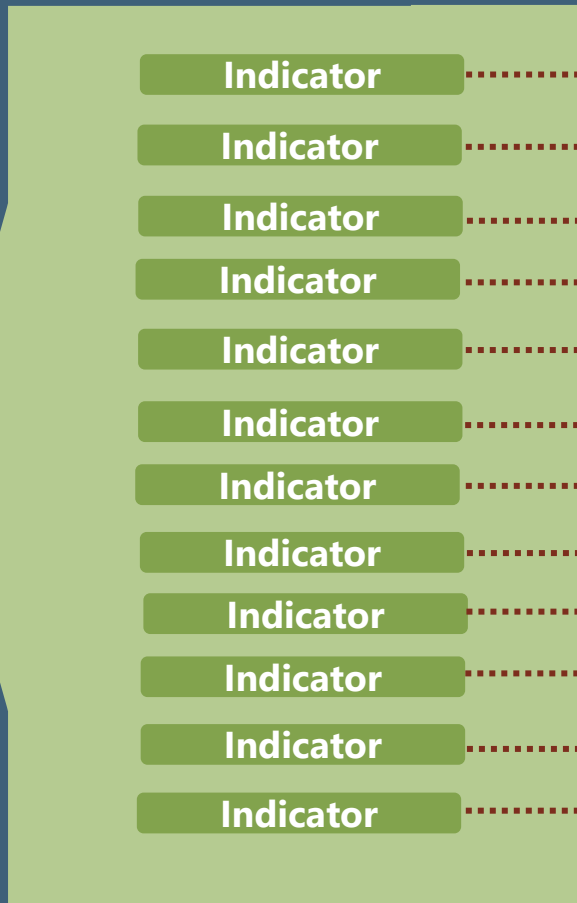
Presence of Shocks/Stressors:



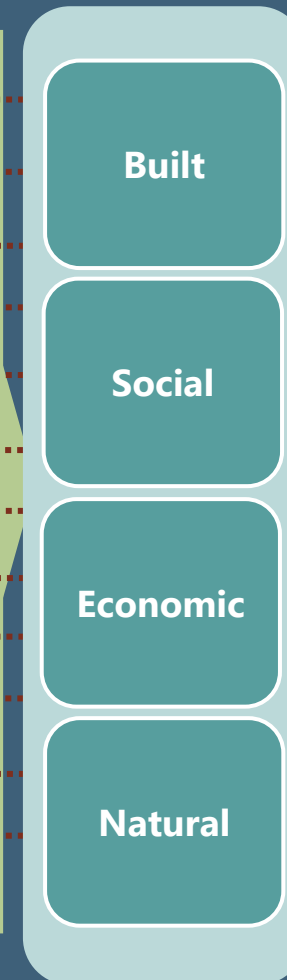
Systems:



Resilience Indicators & Metrics:



Resilience Actions:



Performance Metrics:



Shocks & Stressors Matrix in Action

Shock/Stressor	Impacted System	Resilience Indicators	Resilience Actions	Performance Metrics
Limited Tree Canopy (stressor)	<ul style="list-style-type: none"> Social Economic Natural 	Percent of land area not covered by tree canopy	Plant more trees, prioritizing socially vulnerable communities	<ul style="list-style-type: none"> Number of trees planted per year Trees planted in socially vulnerable communities per year
Infrastructure Failure: Transportation (shock and stressor)	<ul style="list-style-type: none"> Social Economic 	Pavement condition index	Prioritize maintenance for roads identified as critical corridors	<ul style="list-style-type: none"> Miles of pavement repairs per year
Asthma-Related Hospital Visits (stressor)	<ul style="list-style-type: none"> Social Economic 	Counts and rates of asthma emergency department visits per 10,000 residents	<ul style="list-style-type: none"> Provide air filtration devices to low-income residents Set up clean air centers in vulnerable communities 	<ul style="list-style-type: none"> Number of air filtration devices provided per year Number of visitors to clean air centers



NEXT STEPS

Next Steps:

Resilience Exploratory Scenario Planning (RXSP)

- **Resilience Advisory Committee (RAC)**

- Currently developing invite list
- RAC will guide the scenario planning process

- **RXSP Scenario Development**

- Five science-based scenarios
- Shocks & Stressors Matrix will inform development of scenarios and key performance indicators

- **RXSP Workshops**

- 2 RXSP Workshops: Spring and Summer 2023
- Workshops will inform and refine scenarios and alternative futures, and resilience strategies



QUESTIONS & DISCUSSION



AECOM

THANK YOU!

For more information or questions, please contact:

Anna Van

van@scag.ca.gov



CONNECT SOCAL 2024: RESILIENCE & CONSERVATION SUBCOMMITTEE

**Kim Clark (she/they), Resource Conservation & Resilient Communities Program Manager,
SCAG**



Resilience & Conservation Subcommittee Policy Recommendations

Sustainable & Resilient Communities / Natural & Farm
Lands Conservation Working Groups

February 16, 2023

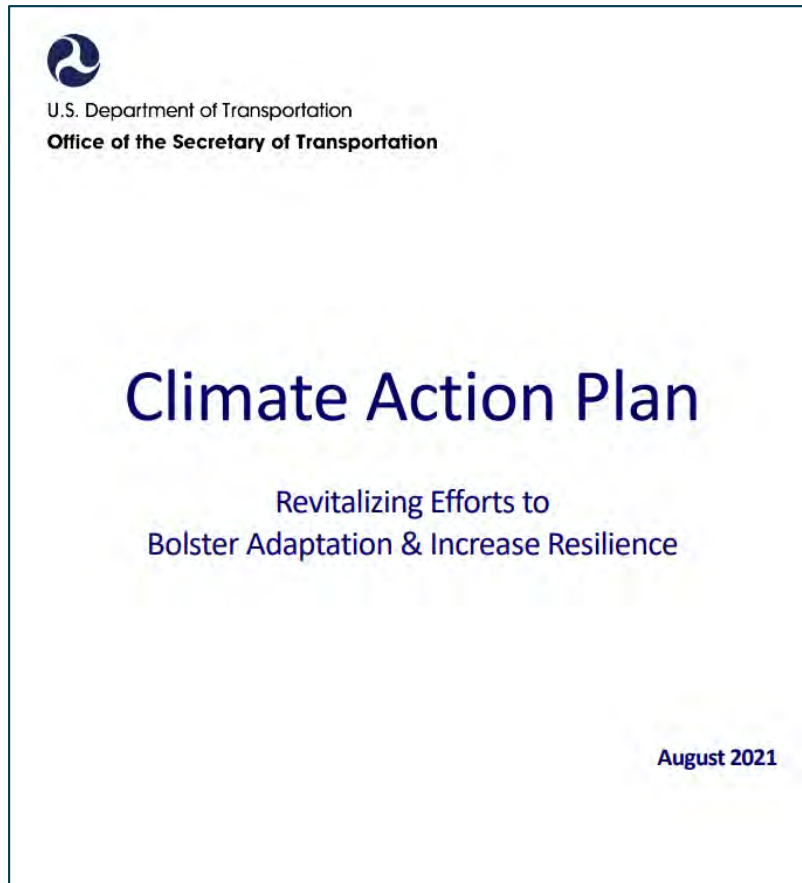
WWW.SCAG.CA.GOV

Resilience & Conservation Subcommittee Proposed Subcommittee Recommendations

- 1. *Define Resilience:*** The capacity of the SCAG region's built, social, economic and natural systems to anticipate and effectively respond to changing conditions, acute shocks, and chronic stressors by creating multiple opportunities for a sustainable, thriving and equitable future;
- 2. *Prioritize the most vulnerable populations and communities subject to climate hazards:*** Help the people, places, and infrastructure that are most at risk for climate change impacts, recognizing that disadvantaged communities are often overburdened
- 3. *Build strong partnerships:*** Coordinate across multiple sectors, scales, and stakeholders to ensure all people have access to the fundamental physical, health, and social benefits of our natural and built systems
- 4. *Apply ecosystem-based approaches:*** Incorporate ecosystem resilience, protection of ecosystem services, and sustainable resource management
- 5. *Maximize mutual benefits:*** Support resilience and conservation initiatives across built, social, economic, and natural systems, such as disaster preparedness, to ensure synergies across systems and reduce/avoid impacts of maladaptation

Examples of Resilience Policies

U.S. DOT – Climate Action Plan



- **Use Best-available Science.** Adaptation and resilience strategies will be grounded in the best available scientific understanding of climate change risks, impacts, and vulnerabilities. Our adaptive actions will not be delayed—all plans and actions will be continuously reevaluated as our understanding of climate impacts evolves.
- **Prioritize the Most Vulnerable.** Adaptation and resilience plans will prioritize helping people, communities, and infrastructure that are most vulnerable to climate impacts—this includes underrepresented groups, low-income communities, communities of color, limited English proficient communities, and individuals with disabilities. These plans will be designed and implemented through a transparent process with meaningful involvement in decision making from all parts of society. Issues of inequality and environmental justice associated with climate change impacts and adaptation will be addressed.
- **Preserve Ecosystems.** Protecting biodiversity and ecosystem services through adaptation strategies will increase resilience of human and natural systems to climate change and other risks, providing benefits to society and the environment (e.g. in a coastal setting, wetlands serve as buffers to transportation assets and can minimize the impacts of storm surge).
- **Build Community Relationships.** Adaptation and resilience require coordination across multiple sectors, geographical scales, and units of government. Our actions will build on existing efforts, knowledge, and meaningful engagement of communities that are impacted. Because impacts, vulnerabilities, priorities and needs vary by region and locale, adaptation will be most effective when driven by local and regional risks and needs.
- **Engage Globally.** The transformation of the global transport sector offers some of the most significant opportunities for deep greenhouse gas emissions cuts, healthier cities, and a 'once-in-a-generation' opportunity to build resilient infrastructure. DOT is committed to working with other nations, multilateral organizations, industry, and non-governmental organizations to lead a global transformation that addresses climate change mitigation, adaptation, and resilience.

Examples of Resilience Policies

California Natural Resources Agency – Safeguarding California



- **Consider climate change** in all functions of government
- **Partner with California's most vulnerable populations** to increase equity and resilience through investments, planning, research, and education
- **Support continued climate research** and data tools
- **Identify significant and sustainable funding sources** to reduce climate risks, harm to people, and disaster spending
- **Prioritize natural infrastructure solutions** that build climate preparedness, reduce greenhouse gas emissions, and product other multiple benefits
- **Promote collaborative adaptation processes** with federal, local, tribal, and regional government partners
- **Increase investment in climate change vulnerability assessments** of critical built infrastructure systems

Examples of Resilience Policies

SACOG – *Transportation Climate Adaptation Plan*

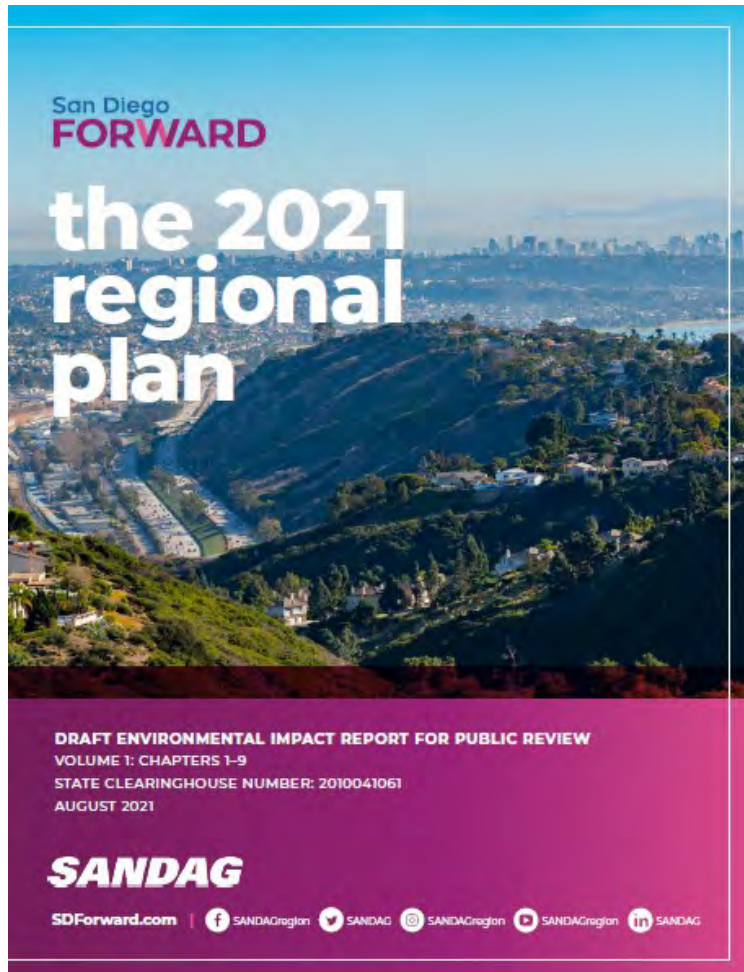


SACRAMENTO REGION TRANSPORTATION CLIMATE ADAPTATION PLAN

- **Adopt integrated approaches:** Incorporate climate change into existing processes and programs.
- **Prioritize the most vulnerable:** Help the people, places, and infrastructure that are most at risk.
- **Use best-available science:** Ground adaptation in scientific understanding.
- **Build strong partnerships:** Coordinate across multiple sectors, scales, and stakeholders.
- **Apply risk-management methods and tools:** Use risk-management tools to prioritize options for reducing vulnerability.
- **Apply ecosystem-based approaches:** Incorporate ecosystem resilience and protection of ecosystem services.
- **Maximize mutual benefits:** Support other initiatives where possible, such as disaster preparedness or sustainable resource management.
- **Continuously evaluate performance:** Determine quantifiable goals and metrics and track progress, adjusting strategies as needed.

Examples of Resilience Policies

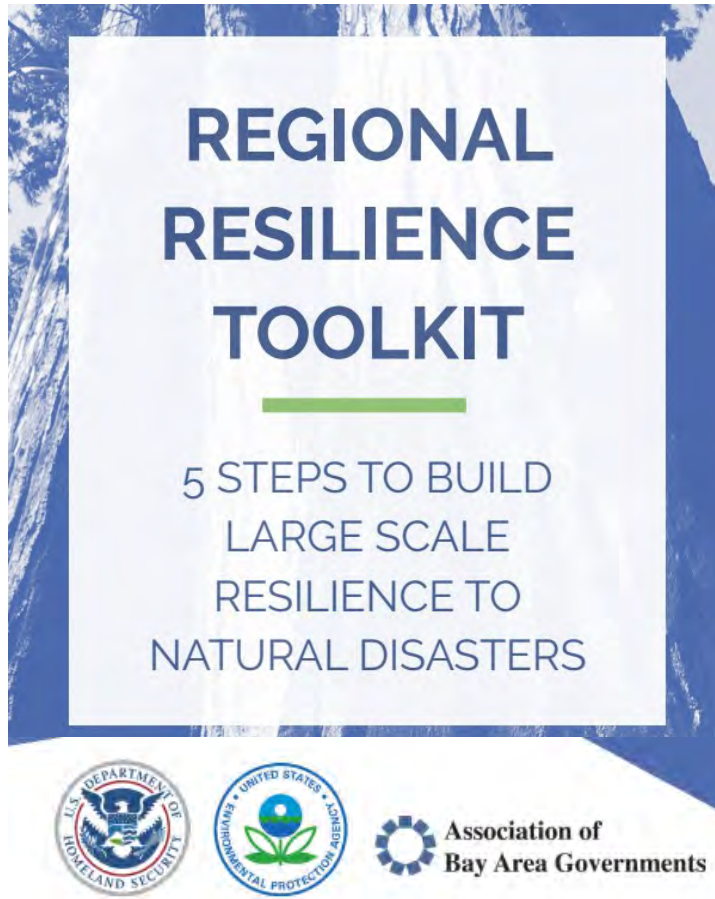
SANDAG – 2021 Regional Plan: San Diego Forward



- **Develop a Regional Resilience Framework** for the San Diego region.
- **Prioritize resilience projects** in communities that are most vulnerable to climate impacts.
- **Develop innovative solutions** to address the need for evacuation and rapid mobility in transit corridors.
- **Address vulnerabilities** to the region’s transportation infrastructure.
- **Protect natural lands** to absorb carbon and protect communities from the impacts of climate change.
- **Serve as a resource for local agencies** and the general public on the impacts of climate change and how to best prepare.

Examples of Resilience Policies

ABAG – 2021 Regional Resilience Toolkit



- **Engage:** Build Trust in Partnerships and Relationships
- **Assess:** Conduct a Risk and Vulnerability Assessment & Connect Resilience with Sustainability and Equity
- **Act:** Identify and Prioritize Strategies
- **Fund:** Make the Business Case for Resilience. Develop a Resilience Capital Strategy
- **Measure:** Evaluate Results and Refine Methods

Resilience & Conservation Subcommittee Proposed Subcommittee Recommendations

- 1. *Define Resilience:*** The capacity of the SCAG region's built, social, economic and natural systems to anticipate and effectively respond to changing conditions, acute shocks, and chronic stressors by creating multiple opportunities for a sustainable, thriving and equitable future;
- 2. *Prioritize the most vulnerable populations and communities subject to climate hazards:*** Help the people, places, and infrastructure that are most at risk for climate change impacts, recognizing that disadvantaged communities are often overburdened
- 3. *Build strong partnerships:*** Coordinate across multiple sectors, scales, and stakeholders to ensure all people have access to the fundamental physical, health, and social benefits of our natural and built systems
- 4. *Apply ecosystem-based approaches:*** Incorporate ecosystem resilience, protection of ecosystem services, and sustainable resource management
- 5. *Maximize mutual benefits:*** Support resilience and conservation initiatives across built, social, economic, and natural systems, such as disaster preparedness, to ensure synergies across systems and reduce/avoid impacts of maladaptation

Resilience & Conservation Subcommittee: Proposed Recommendation #1

Define Resilience:

The capacity of the SCAG region's built, social, economic and natural systems to anticipate and effectively respond to changing conditions, acute shocks, and chronic stressors by creating multiple opportunities for a sustainable, thriving and equitable future



Resilience & Conservation Subcommittee: Proposed Recommendation #2

Prioritize the Most Vulnerable Populations and Communities Subject to Climate Hazards:

Help the people, places, and infrastructure that are most at risk for climate change impacts, recognizing that disadvantaged communities are often overburdened;



Proposed Recommendation #2

Connect SoCal Integration & Implementation Actions

- ***Incorporate climate change considerations into Connect SoCal 2024***
- ***Map disadvantaged communities with critical infrastructure and assets, and assess vulnerability to hazards in the Equity Analysis for Connect SoCal 2024***
- ***Identify and support local agencies to protect communities vulnerable to climate effects***
- ***Support implementing agencies in incorporating equity considerations in climate risk management and/or emergency management plans and preparedness procedures***
- ***Support equitable distribution of efforts in economic development to help vulnerable communities have greater resources to respond to resilience shocks and stressors***



Resilience & Conservation Subcommittee: Proposed Recommendation #3

Build Strong Partnerships:

Coordinate across multiple sectors, scales, and stakeholders to ensure all people have access to the fundamental physical, health, and social benefits of our natural and built systems



Proposed Recommendation #3

Connect SoCal Integration & Implementation Actions

- **Support expansion of public outreach activities** for Connect SoCal 2024 to align implementation of strategies with community needs
- **Collaborate with local and regional partners** to support building resiliency through preparedness education, trainings, and resources
- **Foster engagements** across industry sectors and areas of expertise to support research and solutions development
- **Expand public outreach and education** to policymakers, businesses, and the general public
- **Develop templates to support jurisdictions** in preparing a community-wide outreach program to educate a diverse population on how to prepare and recover from climate change effects



Resilience & Conservation Subcommittee: Proposed Recommendation #4

Apply Ecosystem-Based Approaches:

Incorporate ecosystem resilience, protection of ecosystem services, and sustainable resource management



Proposed Recommendation #4

Connect SoCal Integration & Implementation Actions

- ***Support use of systems-based risk-management methods and tools*** for implementation agencies, and help prioritize options that take into account nature-based solutions and considerations for reducing vulnerabilities
- ***Support preservation, enhancements, and protection of open space, as well as natural and working lands*** that have climate adaptation and resilience benefits – including carbon sequestration, as well as groundwater capture and storage



Resilience & Conservation Subcommittee: Proposed Recommendation #5

Maximize Mutual Benefits:

Support resilience and conservation initiatives across built, social, economic, and natural systems, such as disaster preparedness, to ensure synergies across systems and reduce/avoid impacts of maladaptation.



Proposed Recommendation #5

Connect SoCal Integration & Implementation Actions

- ***Incorporate climate change adaptation for natural lands into Connect SoCal 2024***
- ***Support implementing agencies' efforts to include climate-ready home hardening strategies in housing construction to minimize the potential loss of housing units stemming from climate-related hazards, including sea level rise, wildfires, landslides, and extreme flooding, among others***
- ***Support development of Local Hazard Mitigation Plans to help jurisdictions prepare for disasters and access federal disaster relief resources***
- ***Support integration of climate vulnerability assessments into infrastructure planning and delivery for implementing agencies***





THANK YOU!

Kim Clark, clark@scag.ca.gov

Anna Van, van@scag.ca.gov



UPCOMING GRANT OPPORTUNITIES

Jackie Favors (she/her), CivicSpark Climate Fellow, SCAG

Matthew Aldama (he/him), CivicSpark Climate Fellow, SCAG

Maya Luong (she/her), CivicSpark Climate Fellow, SCAG



Urban Cooling, Resilience and Conservation Grants

February 16, 2023

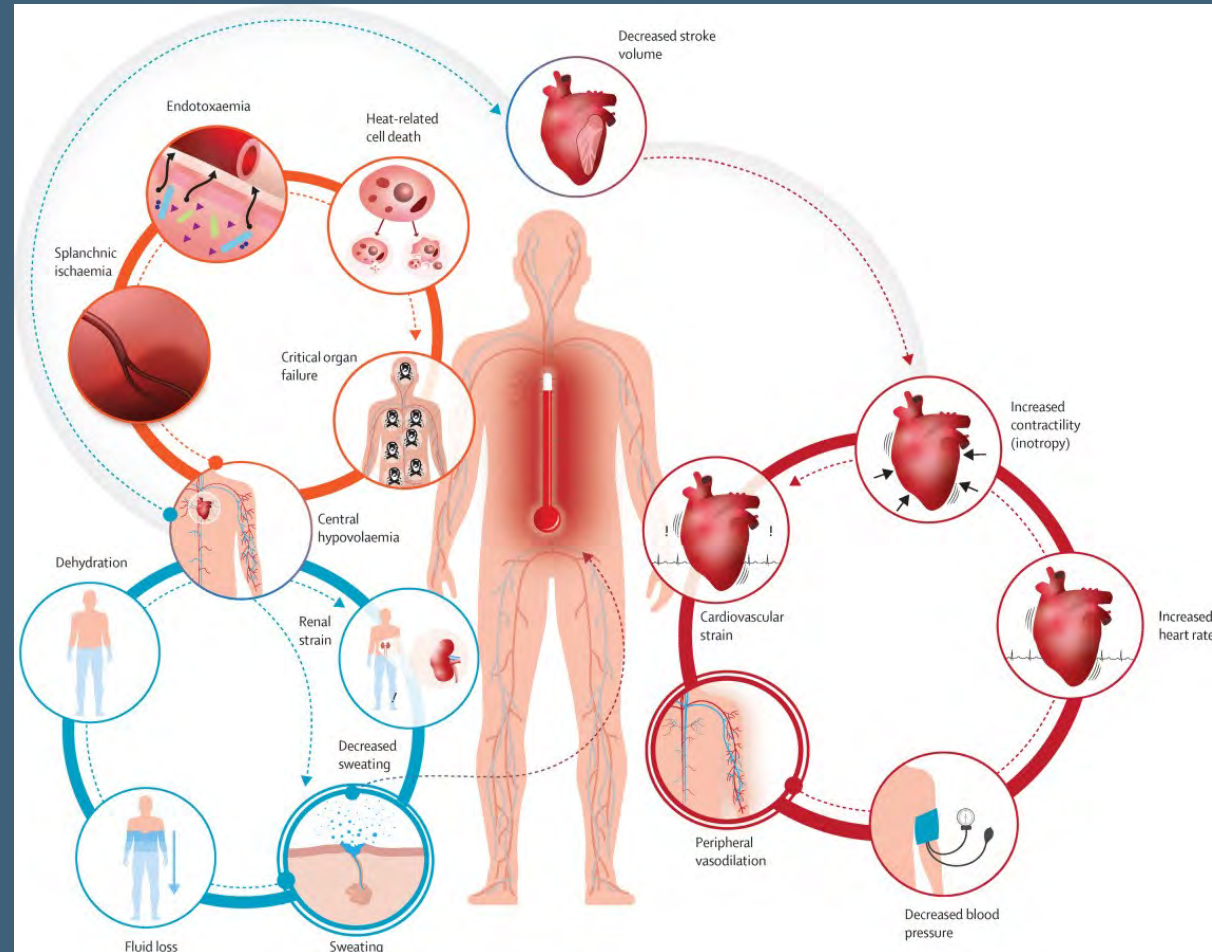
WWW.SCAG.CA.GOV



URBAN HEAT OVERVIEW

Urban Heat Overview

- Extreme heat is the **leading cause of weather- and climate change-related deaths** in the United States



Urban Heat Overview

- Urban heat islands occur throughout the SCAG region, **but are most concentrated in formerly redlined areas and economically disadvantaged areas.**
- Heatwaves are already occurring twice as frequently than historically
 - By mid-century, they are projected to be 3-4 times more frequently during the day time, and 4-5 times more frequently during the nighttime.

Urban Heat Overview

- Urban cooling strategies such as shade structures, bus shelters, and tree planting, etc,... have been shown to mitigate existing heat conditions.
- When there is a reduction in urban heat, people are more likely to engage in active transportation modes.



Photos courtesy of Superior Recreational Products, Spectrum News/Susan Carpenter, and Daniel Jeffries.

Urban Heat Overview

The Future We Don't Want: Cities & heat extremes



By the 2050s

1.6 BILLION people could face average summer temperature highs of 35°C (95°F).

- 1.4 billion more people than today.
- 970 cities could be affected, 620 more than today.
- Cairo, Egypt, today has average summer highs of 34°C(93°F).

70,000 deaths



The 2003 heatwave that hit Europe caused an estimated 70,000 deaths.

High temperatures pose a severe risk to human health. The elderly, young children and people with medical conditions are most at risk.



In the US, heatwaves kill more than 600 people per year on average, more than all other climate hazards.

#1 cause of death

Heat affects workforce productivity. By 2030 annual global heat-related productivity losses could cost \$2 trillion.

\$2 trillion

Cities can adapt by:

Improving green, blue and cool infrastructure like parks, lakes and cool roofs.



Providing shade spots and access to cool buildings.



Preparing Heat Action Plans.



Developing early-warning systems.





URBAN COOLING, RESILIENCE, AND ADAPTATION GRANTS

Resilience Grants: Currently Open or Opening Soon

Program	Funding Amount	Timeline	Eligibility	Project Type	Category
Cal Fire Urban and Community Forestry and Green Schoolyards Grants	\$150,000-\$3,000,000 for each grant depending on grant type. Refer to Grant Guidelines for award amounts (page 20).	Due March 3, 2023 3 PM PST. Webinar for UCF grant on February 16, 6-7 pm	Cities, counties, qualifying districts, nonprofits.	Create a sustainable urban forest and increase the long-term benefits trees provide, improve the public's understanding and appreciation of urban trees, and advance urban forest management and tree care. Special consideration is given to projects serving disadvantaged and/or low-income communities.	Tree Planting, Education
CalTrans Clean California Local Grant Program	\$100 million total. Each project max: \$5 million. No min.	Call for Applications opened February 14, applications will be due April 28, 2023 by 5pm PST.	Local or regional public agency, transit agency, or federally recognized tribal government.	To beautify and improve local streets and roads, tribal lands, parks, pathways, and transit centers	Infrastructure, Education
CalTrans Sustainable Transportation Planning Grants (see next slide)	\$84 million is available for transportation planning projects statewide	Due March 9, 2023, by 5 PM PST	See Grant Application Guide for eligibility for each grant.	Include Sustainable Communities Grants, Climate Adaptation Planning Grants, and Strategic Partnerships Grants.	Transportation

Resilience Grants: Currently Open or Opening Soon



Sample Cal Fire Urban and Community Forestry and Green Schoolyards Grants. Photo for illustration purposes only, courtesy of Speak for the Trees.



CalTrans Clean California Grant Awarded to Anaheim to create the North La Palma Green Promenade, Paseo and Parking lot - transforming the entirely asphalt, two-way North La Palma Parkway into an attractive pedestrian/bicycle friendly, tree-lined, one-way corridor. Photo courtesy of City of Anaheim.

Resilience Grants: Currently Open or Opening Soon

Program	Funding Amount	Timeline	Eligibility	Project Type	Category
CalTrans Sustainable Transportation Planning Grants: Sustainable Communities Grants	Up to \$700,000 per project	Due March 9, 2023, by 5 PM PST	Primary applicants must have statutory authority to conduct transportation/transit planning for their jurisdiction. Generally, the local and regional agencies have this specific authority. Native American Tribal Governments must be Federally recognized to be eligible.	Fund local and regional multimodal transportation and land use planning projects that further the region's RTP SCS/APS (where applicable), contribute to the State's GHG reduction targets, and assist in achieving the Caltrans Mission and Grant Program Objectives. 50% of grant awardees are underserved communities.	Transportation, Equity, Land Use, Housing
CalTrans Sustainable Transportation Planning Grants: Climate Adaptation and Planning Grants	Up to \$3,000,000 per project	Due March 9, 2023, by 5 PM PST		To support planning actions at local and regional levels that advance climate change adaptation efforts on the transportation system, especially efforts that serve the communities most vulnerable to climate change impacts.	Transportation, Infrastructure, Planning

Resilience Grants: Currently Open or Opening Soon



City of Menifee received CalTrans Sustainable Transportation Planning Grants: Sustainable Communities Grants to create a Complete Streets Plan to guide the creation of a network of complete streets designed to safely and comfortably accommodate all modes of travel. Photo for illustration purposes only.



City of Hermosa Beach received CalTrans Sustainable Transportation Planning Grants: Adaptation and Planning Grants to develop a Constraints Analysis and Conceptual Design Project for a suite of green infrastructure and sea level rise resiliency improvements. Photo for illustration purposes only.

Resilience Grants: Currently Open or Opening Soon

Program	Funding Amount	Timeline	Eligibility	Project Type	Category
CalTrans Sustainable Transportation Planning Grants: Strategic Partnerships Grants	Up to \$500,000 per project	Due March 9, 2023, by 5 PM PST	Primary applicants must have statutory authority to conduct transportation/transit planning for their jurisdiction. Generally, the local and regional agencies have this specific authority. Native American Tribal Governments must be Federally recognized to be eligible.	To fund planning projects that partner with Caltrans to address needs on or connecting to the State Highway System (SHS), while the transit sub-category will address multimodal planning projects that focus on transit.	Planning, Transportation

Resilience Grants: Currently Open or Opening Soon



SANDAG

City of San Diego received a CalTrans Sustainable Transportation Planning Grants: Strategic Partnership Grant to accelerate and optimize the implementation of transit priority treatments and **first and last mile complete streets improvements**. "On the Move" will leverage SANDAG's Working Groups to engage members of underserved communities and those whose mobility needs are frequently overlooked or unsolicited when designing and implementing a transportation network. The project will examine gaps in the transportation network to identify corridors with opportunities to address transit delay and access. Photo courtesy of *San Francisco Bike Coalition*.

Resilience Grants: Currently Open or Opening Soon

Program	Funding Amount	Timeline	Eligibility	Project Type	Category
California Strategic Growth Council Transformative Climate Communities: 3 types— Planning, Project Development, and Implementation Grants	Guidelines for upcoming cycle has not been released.	February – March 2023: Round 5 Final Guidelines, NOFA, and Application Summer 2023: Round 5 Applications Due	Local governments, non-profits, CBOs, community development corporations, joint powers authorities, California Native American Tribes	Funds development and infrastructure projects that achieve major environmental, health, and economic benefits in California’s most disadvantaged communities.	Holistic community development

Resilience Grants: Currently Open or Opening Soon



City of Eastside received California Strategic Growth Council Transformative Climate Communities: Planning Grant to improve active and multimodal transportation options, promote public health by reducing vehicle miles traveled, develop an urban tree canopy to mitigate extreme heat, and reduce resident utility bills and energy and water demand.



Pacoima and Sun Valley received California Strategic Growth Council Transformative Climate Communities: Implementation Grant to implement infrastructure to support active transportation.

Resilience Grants: Currently Open or Opening Soon

Program	Funding Amount	Timeline	Eligibility	Project Type	Category
California Strategic Growth Council Community Resilience Centers	Round 1 grants: \$95 million for implementation grants and \$5 million for planning grants. Implementation grants will each range from \$5 million to \$10 million, and planning grants will each range from \$200,000 to \$500,000.	Late Spring 2023: CRC team releases Notice of Funding Availability (NOFA) & applications	Joint power authorities, local government agencies, nonprofits, schools	Program will fund neighborhood-level resilience centers to provide shelter and resources during climate and other emergencies.	Infrastructure
California Strategic Growth Council Affordable Housing and Sustainable Communities	Min: \$10 million, max: \$50 million per award. Refer to grant guidelines for more information.	March 2023 AHSC Round 7 Applications due	Local agencies, developers, tribal entities, and more.	Funding for affordable housing developments and sustainable transportation infrastructure and other programs that encourage residents to walk, bike, and use public transit.	Housing, Transportation

Resilience Grants: Currently Open or Opening Soon



California Strategic Growth Council Community Resilience Centers. Photo for illustration purposes only. Photo courtesy of AFP.



California Strategic Growth Council Affordable Housing and Sustainable Communities grant. Photo for illustration purposes only. Photo courtesy of AFP.

Resilience Grants: Currently Open or Opening Soon

Program	Funding Amount	Timeline	Eligibility	Project Type	Category
U.S. DOT Rebuilding American Infrastructure with Sustainability and Equity (RAISE) Grants	\$1.5 billion total for FY 2023. Between \$1-\$25 million for rural areas, \$5-\$25 million in urban areas per project.	Open, due 11:59 PM EST February 28, 2023. IMPORTANT: you must complete the Grants.gov registration process before submitting the Final Application, and that this process usually takes 2-4 weeks to complete.	A unit of local government; a public agency or publicly chartered authority established by 1 or more States; a special purpose district or public authority with a transportation function, or recognized Indian Tribe.	Surface transportation infrastructure projects that will improve: safety, environmental Sustainability, quality of life, mobility and community connectivity, economic competitiveness	Transportation
California Governor's Office of Planning and Research (OPR) Adaptation Planning Grant Program	\$25M in CA state budget. \$6,600,000 million in FY 2022-23 for awards. Minimum award of \$25,000; Maximum award of \$600,000	Round 1 funding applications must submit all application materials to APGP via sharepoint by 5:00pmPT Friday, March 31, 2023	Local Public Entities, California Native American tribes, Disadvantaged Unincorporated Communities (DUCs), Community-Based Organizations	Funding aims to: fill local, regional, and tribal planning funding needs, provide communities the resources to identify climate resilience priorities, and support the development of a pipeline of climate resilient infrastructure projects across the state.	Planning, Infrastructure

Resilience Grants: Currently Open or Opening Soon



RAISE Grant - Inglewood Transit Connector Project. *Photo courtesy of Envision Inglewood*

Resilience Grants: Currently Open or Opening Soon

Program	Funding Amount	Timeline	Eligibility	Project Type	Category
California Office of Planning and Research (OPR) Regional Resilience Planning and Implementation Grant Program	\$250 million over 3 funding rounds. Planning grants min: \$150,000, max: \$650,000. Implementation grants min: \$800,000, max: \$3,000,000. The RRGP intends to allocate at least 25% of grant funds overall to applications benefitting disadvantaged communities. 10% of funds will support California Native American tribes.	Application opening April 26 2023 Deadline is July 29, 2023	Local public entities, CBOs, Native American tribes	Support regional projects aligned with ICARP priorities that improve regional climate resilience and reduce climate risks from wildfire, sea level rise, drought, flood, increasing temperatures, and extreme heat events.	Planning, Implementation,

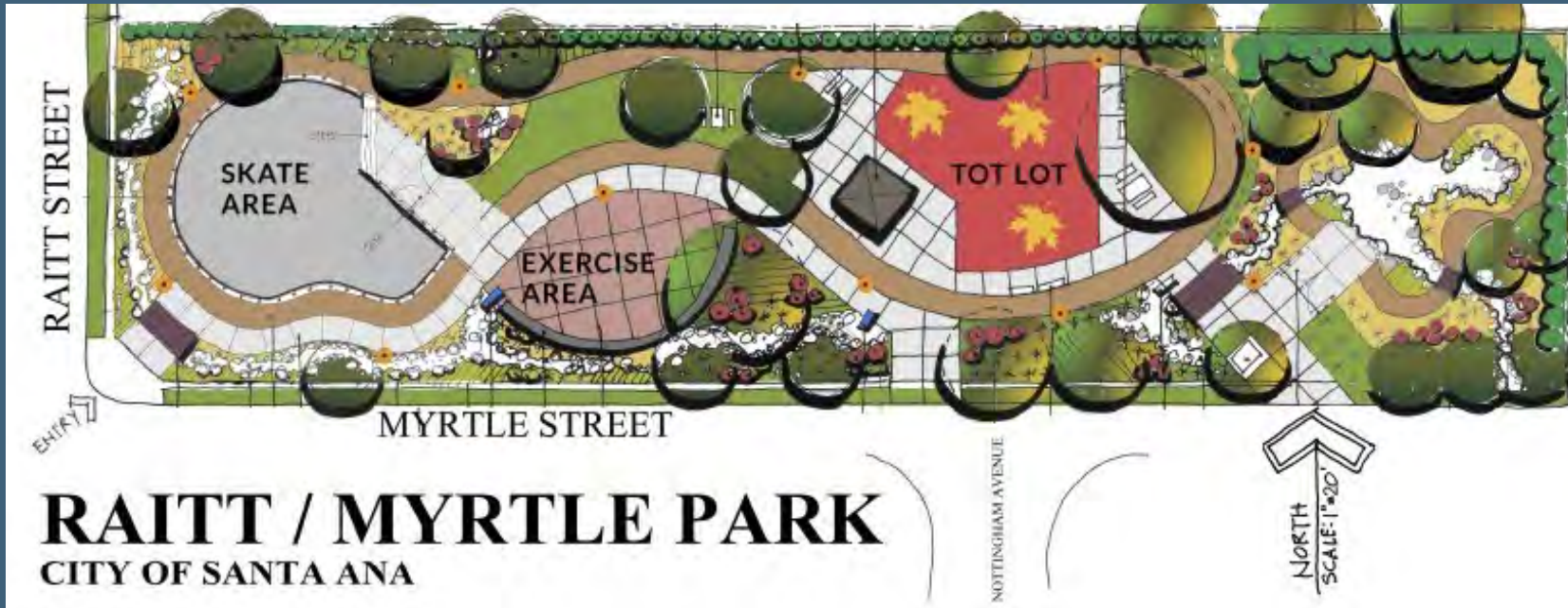
Resilience Grants: Currently Open or Opening Soon

Program	Funding Amount	Timeline	Eligibility	Project Type	Category
Federal Transit Administration Grant for Buses and Bus Facilities	For Fiscal Year 2023, \$469.4 million in funding is available under the Grants for Buses and Bus Facilities Program	Informational webinar on February 28, 2023	Designated recipients that allocate funds to fixed-route bus operators, States (including territories and Washington D.C.) or local governmental entities that operate fixed route bus service, and Indian tribes.	The Grants for Buses and Bus Facilities Competitive Program (49 U.S.C. 5339(b)) makes federal resources available to states and direct recipients to replace, rehabilitate and purchase buses and related equipment and to construct bus-related facilities, including technological changes or innovations to modify low or no emission vehicles or facilities. Funding is provided through formula allocations and competitive grants.	Transportation
California Department of Parks and Recreation Statewide Park Development and Community Revitalization Program	Minimum request per application/park: \$200,000, maximum: \$8,500,000. \$75 million is currently available 2022/23 budget.	Round 5 is postponed. More information will be posted here when available.	Cities, counties, districts, joint power authorities, non-profits.	This competitive grant program creates new parks and new recreation opportunities in the underserved communities across California.	Parks and Recreation

Resilience Grants: Currently Open or Opening Soon

Program	Funding Amount	Timeline	Eligibility	Project Type	Category
California Strategic Growth Council Regional Climate Collaboratives Grant Program	\$8.35 million is available total. \$500,000-\$1,750,000 per project for Round 1	Round 1 closed, round 2 TBD.	Joint power authorities, local government agencies, nonprofits, schools	Place-based capacity building activities, within a three-year grant term, that support under-resourced communities in accessing funding and resources to plan and implement climate mitigation, adaptation, and resiliency projects.	Capacity Building

Resilience Grants: Currently Open or Opening Soon



The City of Santa Ana is using a grant from the Park Development and Community Revitalization Program to build Raitt and Myrtle Park.

Resilience Grants: Grants to Look Out For

Program	Funding Amount	Timeline	Eligibility	Project Type	Category
California Department of Natural Resources Urban Greening Program	N/A	Currently closed	Cities, counties, special districts, non-profits, agencies formed pursuant to Joint Exercise of Powers Act.	Urban greening projects and extreme heat reduction	Extreme Heat Urban Greening
Infrastructure and Jobs Act - Healthy Streets Program	\$500 million over 5 years (\$15m max per grant)	TBD	State & local governments, MPOs, tribal governments, nonprofits	Urban heat islands, tree canopy, equity assessments, planning based on information from assessments, cool pavements, underground infrastructure	Extreme Heat Urban Greening Infrastructure
Inflation Reduction Act Neighborhood Access and Equity Grants	\$3 Billion	Not Yet Decided	N/A		

Resilience Grants: Grants to Look Out For

Program	Funding Amount	Timeline	Eligibility	Project Type	Category
California Natural Resources Agency Environmental Enhancement and Mitigation Program	\$500,000 max per grants	Currently closed	Local, state, and federal agencies and non-profits	Projects to mitigate the environmental impacts caused by new or modified public transportation facilities	Urban Greening, Restoration
California EPA Environmental Justice Small Grants	\$50,000	Currently Closed	Non-profit entities tribal governments	Addressing environmental justice issues in areas disproportionately affected by environmental pollution and hazards	Environmental Justice
Safe Streets and Roads for All (SS4A) Program – U.S. DOT	\$1 Billion for FY22	Currently Closed	MPOs, transit agencies, local governments, federally-recognized tribe	infrastructure, behavioral, and operational initiatives that prevent death and serious injury on roads and streets	Infrastructure, Transportation

Resilience Grants: Grants to Look Out For



The City of Los Angeles Bureau of Sanitation was awarded the Environmental Enhancement and Mitigation Grant to expand urban forestry in South LA including turning an old rail line on Slauson Ave into a multi-purpose path.

Photo courtesy of Metro

Resilience Grants: Grants to Look Out For

Program	Funding Amount	Timeline	Eligibility	Project Type	Category
Cal ReLeaf Arbor Week Grant Program	\$2-5k	TBD	501c3 or fiscal sponsor	Community tree planting projects during Arbor Week	Tree Planting
California Governor's Office of Planning and Research (OPR) Extreme Heat and Community Resilience Grant Program	<i>A total of \$25 million will be available for awards in Round 1.</i>	TBD	TBD	Intended to fund projects that mitigate the impacts of extreme heat or the urban heat island effort. Eligible project strategies include, but are not limited to, heat action plans, providing mechanical or natural shade, increasing building and surface reflectance, providing passive or low-energy cooling, and promoting evaporative cooling.	Extreme Heat

Resilience Grants: Grants to Look Out For

Program	Funding Amount	Timeline	Eligibility	Project Type	Category
California Office of Environmental Farming & Innovation (CDFW) Conservation Agriculture Planning Grants Program	Applicants may apply for up to \$250,000	Currently closed.	Tribes, technical service providers (TSPs), Natural Resources Conservation Service (NRCS), professional certified crop advisors, pest control advisors, rangeland managers, non-profit organizations, and others.	This program will fund the development of plans that will help farmers and ranchers identify actions for climate change mitigation and adaptation, further environmental stewardship on farms and ranches and ensure agricultural food security into the future.	Agriculture

Resilience Grants: Grants to Look Out For

Program	Funding Amount	Timeline	Eligibility	Project Type	Category
CalRecycle Rubberized Pavement Grant Program	For the closed 2022-2023 fiscal year, \$250,000 was the maximum available for each individual grant awards, \$350,000 for each regional grant award, and \$500,000 for each tribal entity grant award.	Currently closed	Local government entities, joint power authorities, state agencies, tribal authorities.	An application may include rubberized pavement (hot-mix and chip seal) projects for roadways, Class 1 bikeways, greenways, and disability access at parks. A greenway is a travel corridor for pedestrians, bicycles, non-motorized vehicle transportation, recreation, or a combination thereof, located along natural landscape features, such as an urban watercourse.	Infrastructure Active Transportation
PeopleforBikes Community Grant Programs	Maximum \$10,000 per application	Grant cycle is expected to open in early fall 2023.	Non-profit organizations with a focus on bicycling, active transportation or community development; from city or county agencies or departments and from state or federal agencies working locally	Supports bicycle infrastructure projects and targeted initiatives that make it easier and safer for people of all ages and abilities to ride.	Active Transportation



CONSERVATION GRANTS

Conservation: Grants Open or Coming Soon

Program	Funding Amount	Timeline	Eligibility	Project Type	Category
Healthy Soils Program (HSP) - Healthy Soils - Block Grant Pilot Program	\$35,000,000	Feb 2023 - Final request for grant apps/start of CDFA grant app webinars Apr 2023 - Grant Applications due; Jun 2023 - Awards announced	RCDs, UCs, Tribal Govs, Land Trusts, and other nonprofits	The HSP Incentives Program provides financial assistance for implementation of conservation management that improve soil health, sequester carbon and reduce greenhouse gas (GHG) emissions.	Soil Improvement
Restoration Grant Programs – Drought, Climate, and Nature-Based Solutions	\$200,000,000	Fiscal Year 2023-24	Tribes, nonprofit organizations and public agencies.	Drought Resiliency, Climate Adaptation, wetlands and mountain meadow restoration, and wildlife corridors	Planning, Implementation, Restoration
Multibenefit Land Repurposing Guidelines	\$40,000 to \$400,000 per grant	Applications Due March 29, 2023	Tribes, nonprofit organizations and public agencies, GSA's	seeks to increase regional capacity to repurpose agricultural land to reduce reliance on groundwater while providing community health, economic wellbeing, water supply, habitat, and climate benefits.	Planning, Implementation, Land Repurposing

Healthy Soils Program

American Farmland Trust and other collaborators were granted and award of \$249,980 in order to demonstrate BioChar application on an almond orchard.



American Farmland Trust
SAVING THE LAND THAT SUSTAINS US

NATIONAL CENTER
FOR APPROPRIATE
TECHNOLOGY

Scaling Sustainable
Biochar Research &
Commercialization for
Agriculture & Conservation:
A Summary from a Stakeholder Convening
December, 2022



Conservation: Grants to Look Out For

Program	Funding Amount	Timeline	Eligibility	Project Type	Category
Working Lands and Riparian Corridors program – CA Dept. of Conservation	\$2,400,000	Closed, Awards just announced	Resource Conservation Districts	The Working Lands and Riparian Corridors program provides grants to restore or enhance working lands and riparian corridors through restoration projects on agricultural lands.	Planning, Implementation, Restoration
California Farmland Conservancy Program – CA Dept. Of Conservation	\$4,900,000	Closed Awards just announced	-conservation nonprofits -local government entities -tribes on native American Heritage Commission List	Agriculture Conservation Easements and Land Improvement Grants	Agriculture, Land Improvement
Sustainable Agricultural Lands Conservation Program (SALC) - SGC	\$66,000,000 (Round 7, FY20-21) \$TBD (Round 8, FY21-22)	Applications for Round 8 (FY21-22) were due 9/8/22; Guidelines for Round 9 (FY22-23) anticipated to be released Spring (Apr) 2023	Cities, counties, non-profit organizations, resource conservation districts, regional park or open-space districts, regional park or open-space authorities, and federally recognized California Native American tribes.	Land Use Planning, Agricultural Conservation Acquisition, and Capacity and Project Development.	Agricultural Acquisition

Working Lands and Riparian Corridors Program

The Santa Rosa-based [Sonoma Resource Conservation District](#) was awarded \$409,275 for its Sonoma Mountain Stormwater Management and Rainwater Storage project.

The project installed 200,000-gallon capacity storage tanks to collect runoff from barns and other ranch infrastructure, significantly reducing groundwater pumping.



Conservation: Grants to Look Out For

Program	Funding Amount	Timeline	Eligibility	Project Type	Category
Land and Water Conservation Fund	Estimated \$30 million	June 1, 2023 before 5:00 p.m.	cities, counties, federally recognized tribes, JPA's, non-state agency recreation districts	provide funding for the acquisition or development of land to create new outdoor recreation opportunities for the health and wellness of Californians.	Land Conservation
Integrated Regional Water Management Grant Program	\$193 million in total funding	February 2023	Public agencies, 501(c) Nonprofit organizations, Public utilities, Federally recognized Indian Tribes	Water use efficiency, water conservation, wastewater treatment, desalination projects to combat drought.	Water Conservation
Brownfield Assessment Grants	Funding varies based on assessment type	TBA	Public agencies, 501(c) Nonprofit organizations, Public utilities, Federally recognized Indian Tribes, local government	characterize, assess, conduct a range of planning activities, develop site-specific cleanup plans, and conduct community engagement related to brownfield sites.	Land Conservation

Brownfield Assessment Grant



Los Angeles received \$500,000 for the cleanup of the former Crocker Plating works site. Operations consisted of metal plating, which were discontinued in 1984. Soil investigation results identified volatile organic compounds such as tetrachloroethene and trichloroethene, and metals such as cadmium, copper, lead, and nickel at the site.

Thank You

Thank you for your time and attention
Slides will be available after the meeting

Get in touch with us:

Maya Luong at Luong@scag.ca.gov

Jackie Favors at Favors@scag.ca.gov

Matt Aldama at Aldama@scag.ca.gov





THANK YOU!

For more information, please visit:

www.scag.ca.gov/greenprint

www.scag.ca.gov/ramp-atg



CONNECT SOCIAL 2024 UPDATE

Leslie Cayton (she/they/siya), Associate Regional Planner, SCAG

THE 2024 REGIONAL TRANSPORTATION PLAN/SUSTAINABLE COMMUNITIES STRATEGY
OF THE SOUTHERN CALIFORNIA ASSOCIATION OF GOVERNMENTS



Leslie Cayton

Associate Regional Planner

February 16, 2023

What is Connect SoCal?



REGIONAL TRANSPORTATION PLAN/ SUSTAINABLE COMMUNITIES STRATEGY

Connect SoCal is a 20+ year plan with 6,000+ transportation projects, a regional development pattern and many supportive programs and strategies.

What is required for the RTP/SCS?

State Requirements (SB 375)

- Integrated regional development pattern & transportation network
- Reduce GHG emissions from passenger vehicles to meet targets

Federal Requirements

- Updated every 4 years
- 20+ years into the future
- Revenues = Costs
- Demonstrate transportation conformity
- Public involvement

Why meet the requirements?

Meeting our Federal and State requirements is critical for projects in the region to receive **transportation funding or approval.**

- **Federal Transportation Conformity**

- Required for federal funding or approval of projects
- \$41.1 Billion of Federal Revenue Sources in Connect SoCal 2020

- **State GHG Emission Reduction Target**

- Required by Solutions for Congested Corridors Program and the Trade Corridor Enhancement Program
- In 2020, SCAG projects won a total of \$925 Million in funding from both programs

Development Update

Connect SoCal 2024 Overview



Foundations
and
Frameworks

2021

Data
Collection and
Policy
Development

2022

Outreach
and
Analysis

2023

Draft
Plan and
Adoption

2024

COMPLETED 2022 MILESTONES

- ✓ Draft Goals & Vision
- ✓ Draft Performance Measures
- ✓ Launched Policy Subcommittees
- ✓ Project List (Nov. 1)
- ✓ Local Data Exchange (Dec. 2)

UPCOMING MILESTONES

- Early 2023: Submit draft Technical Methodology to CARB
- March 2, 2023: Joint Policy Committee
- Spring 2023: General Outreach

What is the Technical Methodology?

- **Methods for calculating GHG emissions**
 - Explains how SCAG will estimate GHG reductions from Connect SoCal using the activity-based model or other off-model method
- **Required by California Air Resources Board (CARB)**
 - Every MPO must submit a draft to CARB prior to starting their formal public participation process
 - Connect SoCal 2024 public workshops slated to start in Spring 2023

SCAG's 2035 GHG
Reduction Target:
**19% from
2005 levels**

Objective: Forecasted Regional Development Pattern

- LDX helps us get to the *Forecasted Regional Development Pattern* by being:
 - Rooted in local planning
 - Steered by a regional vision
 - Aligned with state and federal policy
- scag.ca.gov/local-data-exchange
- hub.scag.ca.gov

Status

- LDX 1:1 Sessions Completed: 164 (83%)
- Input Deadline was Dec. 2
- 145 Jurisdiction Responses

Next LDX Update

Technical Working Group

- Mar. 16, 2023, 10 AM – 12 PM

Technical Report Structure Update




2020
Sustainable Communities Strategy
Technical Report
Natural & Farm Lands
Conservation
Technical Report




2024
Land Use &
Communities
Technical Report

Connect SoCal 2024 Subcommittees



**NEXT GENERATION
INFRASTRUCTURE**



**RESILIENCE &
CONSERVATION**



**RACIAL EQUITY &
REGIONAL PLANNING**

P U R P O S E

Dive deeper into key areas for Connect SoCal and provide recommendations to the Policy Committees on how to address these issues in the Plan

R E P R E S E N T A T I O N

Members from each county with invited participation from business or civic leaders and practitioners

D U R A T I O N

Launched in September 2022, convened through early 2023
Final Meeting and Recommendations: January 19 (RE&RP) and 23 (R&C), February 15 (NGI)

More info: scag.ca.gov/subcommittees



**NEXT GENERATION
INFRASTRUCTURE**



**RESILIENCE &
CONSERVATION**



**RACIAL EQUITY &
REGIONAL PLANNING**

Tune in to the upcoming
Joint Policy Committee

Thursday, **Mar. 2**, 2023

Recommendations by the three
Subcommittees will be presented
and discussed at the JPC

Questions? Comments?

FOR MORE INFORMATION, PLEASE VISIT
SCAG.CA.GOV/CONNECT-SOCAL





THANK YOU!

For more information, please visit:

<https://scag.ca.gov/regional-planning-working-groups>

For additional questions, please contact SCAGgreenregion@scag.ca.gov