



SOUTHERN CALIFORNIA
ASSOCIATION OF GOVERNMENTS
900 Wilshire Blvd., Ste. 1700
Los Angeles, CA 90017
T: (213) 236-1800
www.scag.ca.gov

REGIONAL COUNCIL OFFICERS

President
Rex Richardson, Long Beach

First Vice President
Clint Lorimore, Eastvale

Second Vice President
Jan C. Harnik, Riverside County
Transportation Commission

Immediate Past President
Bill Jahn, Big Bear Lake

COMMITTEE CHAIRS

Executive/Administration
Rex Richardson, Long Beach

Community, Economic &
Human Development
Jorge Marquez, Covina

Energy & Environment
David Pollock, Moorpark

Transportation
Cheryl Viegas-Walker, El Centro

SPECIAL MEETING – RETREAT

EXECUTIVE/ ADMINISTRATION COMMITTEE

Remote Participation Only

Wednesday, August 19, 2020

3:00 p.m. – 5:00 p.m.

Thursday, August 20, 2020

3:00 p.m. – 5:00 p.m.

To Participate on Your Computer:

<https://scag.zoom.us/j/889726747>

To Participate by Phone:

Call-in Number: 1-669-900-6833

Meeting ID: 889 726 747

***Please see next page for detailed
instructions on how to participate in the meeting.***

PUBLIC ADVISORY

Given recent public health directives limiting public gatherings due to the threat of COVID-19 and in compliance with the Governor's recent Executive Order N-29-20, the meeting will be held telephonically and electronically.

If members of the public wish to review the attachments or have any questions on any of the agenda items, please contact Peter Waggoner at (213) 630-1402 or via email at waggoner@scag.ca.gov. Agendas & Minutes are also available at: www.scag.ca.gov/committees.

SCAG, in accordance with the Americans with Disabilities Act (ADA), will accommodate persons who require a modification of accommodation in order to participate in this meeting. SCAG is also committed to helping people with limited proficiency in the English language access the agency's essential public information and services. You can request such assistance by calling (213) 630-1402. We request at least 72 hours (three days) notice to provide reasonable accommodations and will make every effort to arrange for assistance as soon as possible.



Instructions for Public Comments

Submit written comments via email to: ePublicComment@scag.ca.gov.

Written comments will be read by SCAG staff up to three (3) minutes and included as part of the official record of the meeting. The Chair has the discretion to reduce the time limit based upon the number of e-comments received and may limit the total time for all public comments to twenty (20) minutes.

In accordance with SCAG's Regional Council Policy, Article VI, Section H and California Government Code §54957.9, if a SCAG meeting is "willfully interrupted" and the "orderly conduct of the meeting" becomes unfeasible, the presiding officer or the Chair of the legislative body may order the removal of the individuals who are disrupting the meeting.

Instructions for Participating in the Meeting

SCAG is providing multiple options to participate in the meeting:

To Participate by Computer

1. Click the following link: <https://scag.zoom.us/j/889726747>.
2. If Zoom is not already installed on your computer, click "Download & Run Zoom" on the launch page and press "Run" when prompted by your browser. If Zoom has previously been installed on your computer, please allow a few moments for the application to launch automatically.
3. Select "Join Audio via Computer."
4. The virtual conference room will open. You will receive a message, "Please wait for the host to start this meeting," simply remain in the room until the meeting begins.

To Participate by Phone

1. Call **1-669-900-6833** to access the conference room. Given high call volumes recently experienced by Zoom, please continue dialing until you connect successfully.
2. Enter the **Meeting ID: 889 726 747**, followed by #.
3. Indicate that you are a participant by pressing # to continue.
4. Remain on the line if the meeting has not yet started.



EAC - Executive/Administration Committee

Members – 2020

1. **Hon. Rex Richardson**
Chair, Long Beach, RC District 29
2. **Hon. Clint Lorimore**
1st Vice Chair, Eastvale, RC District 4
3. **Hon. Jan # Harnik**
2nd Vice Chair, RCTC Representative
4. **Hon. Bill Jahn**
Imm. Past Chair, Big Bear Lake, RC District 11
5. **Hon. Jorge Marquez**
CEHD Chair, Covina, RC District 33
6. **Hon. Frank Yokoyama**
CEHD Vice Chair, Cerritos, RC District 23
7. **Hon. David Pollock**
EEC Chair, Moorpark, District 46
8. **Hon. Carmen Ramirez**
EEC Vice Chair, Oxnard, RC District 45
9. **Hon. Cheryl Viegas-Walker**
TC Chair, El Centro, RC District 1
10. **Hon. Steven Hofbauer**
TC Vice Chair, Palmdale, RC District 43
11. **Hon. Jose O Solache**
LCMC Chair, Lynwood, RC District 26
12. **Hon. Peggy Huang**
LCMC Vice Chair, TCA Representative
13. **Hon. Margaret Finlay**
Pres. Appt., Duarte, RC District 35
14. **Hon. Kim Nguyen**
Pres. Appt., Garden Grove, RC District 18
15. **Hon. Deborah Robertson**
Pres. Appt., Rialto, RC District 8

OUR MISSION

To foster innovative regional solutions that improve the lives of Southern Californians through inclusive collaboration, visionary planning, regional advocacy, information sharing, and promoting best practices.

OUR VISION

Southern California's Catalyst for a Brighter Future

OUR CORE VALUES

Be Open | Lead by Example | Make an Impact | Be Courageous



EXECUTIVE/ADMINISTRATION COMMITTEE

.....k-uk- ° u° 8-V) ° · 'oh-#@OU --u@8'

16. Hon. David Ryu

Pres. Appt., Los Angeles, RC District 51

17. Hon. Andrew Masiel 'O

Tribal Govt Regl Planning Board Representative

18. Randall Lewis

Business Representative, Non-Voting Member

OUR MISSION

To foster innovative regional solutions that improve the lives of Southern Californians through inclusive collaboration, visionary planning, regional advocacy, information sharing, and promoting best practices.

OUR VISION

Southern California's Catalyst for a Brighter Future

OUR CORE VALUES

Be Open | Lead by Example | Make an Impact | Be Courageous



EXECUTIVE/ADMINISTRATION COMMITTEE

RETREAT AGENDA - SPECIAL MEETING

Southern California Association of Governments

Remote Participation Only

Wednesday, August 19 – Thursday, August 20, 2020

3:00 PM – 5:00 PM

CALL TO ORDER AND PLEDGE OF ALLEGIANCE

(The Honorable Rex Richardson, Chair)

PUBLIC COMMENT PERIOD

The public is encouraged to submit comments by sending an email to ePublicComment@scag.ca.gov. Written comments will be read by SCAG staff up to three (3) minutes and included as part of the official record of the meeting. The Chair has the discretion to reduce the time limit based upon the number of e-comments received and may limit the total time for all public comments to twenty (20) minutes.

RETREAT SESSION 1 - Wednesday, August 19

ROLL CALL

DISCUSSION ITEMS

- | | |
|--|----------|
| 1. Welcome and Opening Remarks
<i>(The Honorable Rex Richardson, Chair)</i> | 10 mins. |
| 2. SCAG Orientation
<i>(Darin Chidsey, Chief Operating Officer)</i> | 20 mins. |
| 3. Connect SoCal Update
<i>(Kome Ajise, Executive Director)</i> | 15 mins. |
| 4. 2020-2021 Planning Outlook
<i>(Sarah Jepson, Director of Planning)</i> | 75 mins. |

RECESS

The Special Meeting of the EAC will recess and resume at 3:00 p.m. on Thursday, August 20, 2020



EXECUTIVE/ADMINISTRATION COMMITTEE

RETREAT AGENDA - SPECIAL MEETING

Southern California Association of Governments

Remote Participation Only

Wednesday, August 19 – Thursday, August 20, 2020

3:00 PM – 5:00 PM

RETREAT SESSION 2 – Thursday, August 20

RECONVENE SPECIAL MEETING

ROLL CALL

DISCUSSION ITEMS

- | | |
|--|----------|
| 5. Welcome and Opening Remarks
<i>(The Honorable Rex Richardson, Chair)</i> | 10 mins. |
| 6. Special Committee on Equity and Social Justice
<i>(The Honorable Rex Richardson, Chair)</i> | 30 mins. |
| 7. Structure, Schedule and Content for Policy Committees
<i>(Darin Chidsey, Chief Operating Officer)</i> | 30 mins. |
| 8. Legislative Program and Board Member Engagement
<i>(Art Yoon, Director of Policy and Public Affairs)</i> | 30 mins. |
| 9. Wrap Up
<i>(The Honorable Rex Richardson, Chair)</i> | 20 mins. |

ADJOURNMENT



2020-2021 MAJOR MILESTONES, MEETINGS & EVENTS

SCAG			Legislative	
			2020	
<ul style="list-style-type: none"> Housing Element Digital Workshops 		LISTEN	August	<ul style="list-style-type: none"> CA: August 31 - Last Day for Each House to Pass Bills
<ul style="list-style-type: none"> Connect SoCal Adoption Notice of Draft RHNA Allocations Sustainable Communities Program: Active Transportation & Safety Virtual County Tours CCF - Call for Collaboration Call for Projects 	Regional Data Plan - Outreach RHNA Appeals Process		September	<ul style="list-style-type: none"> CA: September 30 - Last Day for the Governor to Sign or Veto Bills
<ul style="list-style-type: none"> New SCAG Website Launch Sustainable Communities Program: Housing & Sustainable Development 		CONVENE	October	US House District Work Period US Senate State Work Period
<ul style="list-style-type: none"> 11th Annual Southern California Economic Summit 			November	<ul style="list-style-type: none"> Nationwide: November 3 - General Election
			December	CA District Work Period <ul style="list-style-type: none"> CA: December 7 - All Assemblymembers and Half of Senate Sworn In
			2021	
<ul style="list-style-type: none"> CCF - Call for Collaboration Project Awards 			January	<ul style="list-style-type: none"> US: January 3 - 117th Congress Convenes CA: January 4 - California State Legislature Reconvenes
<ul style="list-style-type: none"> RHNA Final Allocation Plan Adoption SCAG Sacramento Legislative Summit NARC National Conference of Regions 	New Member Orientation		February	
<ul style="list-style-type: none"> California Congressional Transportation Reception Sustainable Communities Program: Smart Cities & Mobility Innovation 		CATALYZE	March	
<ul style="list-style-type: none"> SCAG Washington Legislative Advocacy Trip 			April	
<ul style="list-style-type: none"> 56th Annual Regional Conference & General Assembly Coalition for America's Gateways & Trade Corridors Annual Meeting Sustainable Communities Program: Green Region 			May	

2020-2021

Executive/Administration Committee Retreat

Day 1 – August 19, 2020

www.scag.ca.gov



Welcome & Opening Remarks



Rex Richardson
SCAG President

2020-2021

Executive/Administration Committee Retreat

Day 1 – August 19, 2020

www.scag.ca.gov

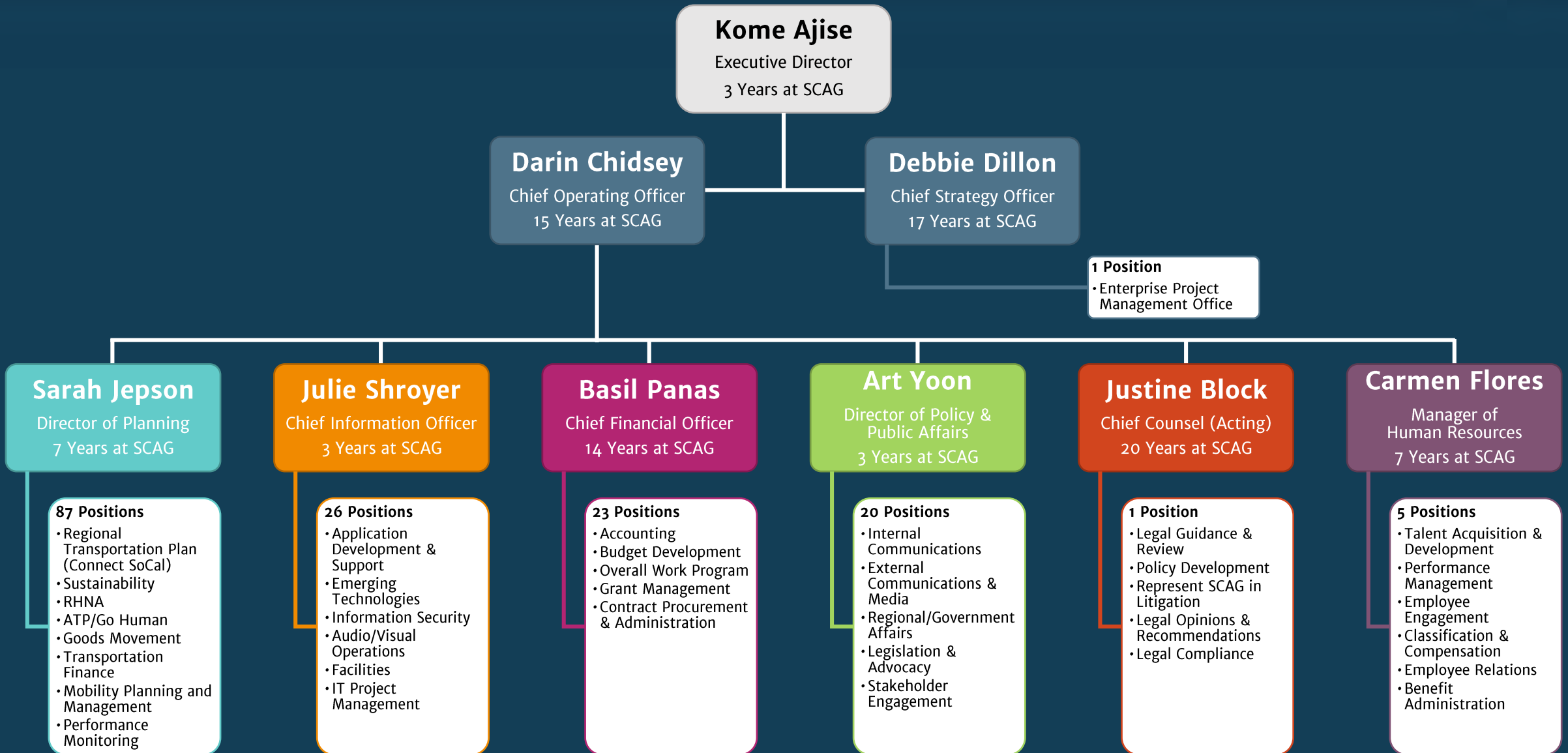


SCAG Orientation

Darin Chidsey
Chief Operating Officer



Executive Team Organizational Chart – August 2020



2020-2021

Executive/Administration Committee Retreat

Day 1 – August 19, 2020

www.scag.ca.gov



The logo for CONNECT SoCal Update features the word "CONNECT" in white uppercase letters with a yellow dot above the "O" and a red dot above the "T". Below it, "SoCal" is written in white, with a blue dot above the "o" and a blue dot above the "a". The word "Update" is in a larger white font to the right.

CONNECT SoCal Update

An aerial photograph of a busy port. A large blue CMA CGM container ship is docked at a pier, surrounded by stacks of colorful shipping containers and port infrastructure like cranes.

Kome Ajise
Executive Director

Since the Regional Council adopted Connect SoCal for federal conformity purposes, SCAG has completed a number of tasks to gather additional input:

Worked with local authorities to identify and restore locally approved entitlements as conveyed by local jurisdictions.

Engaged stakeholders on the short- and long-term impacts of the COVID-19 pandemic on the region.

Held Virtual Townhall listening session to learn the impacts of COVID-19 and heard from stakeholders about how Connect SoCal can help assist in moving the region forward.

Growth Forecast Analysis

- SCAG conducted multiple rounds of peer review and feedback on the data that forms the foundation for Connect SoCal, giving cities and counties several opportunities to comment on things like how growth ought to be distributed, and adjusting accordingly.
- SCAG received feedback from 12 jurisdictions – seven asking for revisions and five requesting no revisions whatsoever. SCAG staff is working to incorporate these changes.
- Staff has high confidence that the data not only can accurately reflect entitlements and their phasing, but will also fall within general plan capacities at the neighborhood level (as conveyed by jurisdictions).



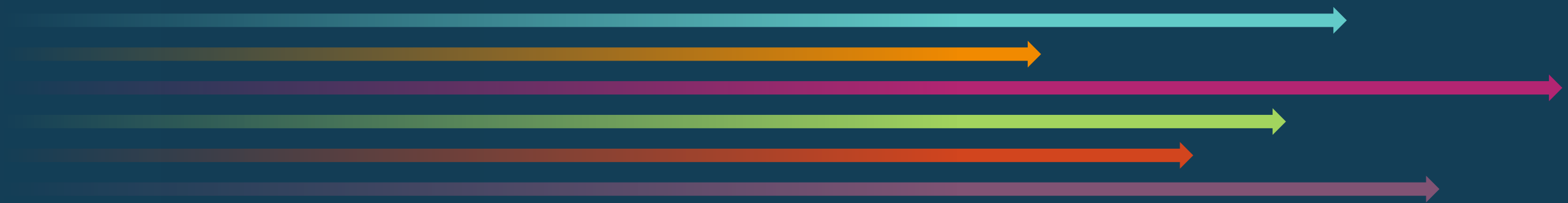
What did we learn?

- The top noted impacts of COVID-19 to communities is lack of income to pay rent/mortgage and increased vehicle speeds on local roads.
- The top long-term concern about COVID-19 impact to the community was lack of government funding for services and programs.
- On average, 87% of respondents noted that the Connect SoCal goals were either still important or more important in light of COVID-19.



Moving Forward

- Staff estimates that adjustments to data will be minor and will not significantly impact the overall regional modeling results of the plan.
- Given the living nature of Connect SoCal and its existing focus on the need to develop regional resilience strategies targeting our most vulnerable communities, staff is not recommending any specific modifications or clarifications to Connect SoCal at this time.
- Staff recommends that policy changes and plan updates be considered through future board action informed by the upcoming Connect SoCal Implementation Strategy and 2024 Connect SoCal Emerging Issues Outlook, as well as the Connect SoCal amendment process.



Why should we adopt the **Sustainable Communities Strategy** now?

- We are confident in the strength of the plan, which is the product of rigorous collaboration and meticulous vetting.
- SCAG has listened closely to stakeholder concerns, going above and beyond to conduct extra rounds of peer review and stakeholder outreach
- Further delay threatens economic recovery by making the region ineligible for state transportation funds – about \$1.4 billion in SB 1 support.
- Connect SoCal prioritizes the attainment of all applicable federal and state performance requirements – it has already been approved by the FHWA and FTA and it fully achieves state greenhouse gas reduction targets.
- Connect SoCal is a living document, subject to amendment and updated every four years, ready to evolve to address the needs of a constantly changing world.

Ongoing Outreach & Future Actions Planned



Timeframe	Action
Ongoing	Stakeholder Briefings
July - September	Develop Connect SoCal Implementation Strategy
July - September	Develop 2024 Connect SoCal Emerging Issues Outlook
September	Connect SoCal to Regional Council for Final Approval



**Questions?
Comments?**

www.scag.ca.gov



2020-2021

Executive/Administration Committee Retreat

Day 1 – August 19, 2020

www.scag.ca.gov

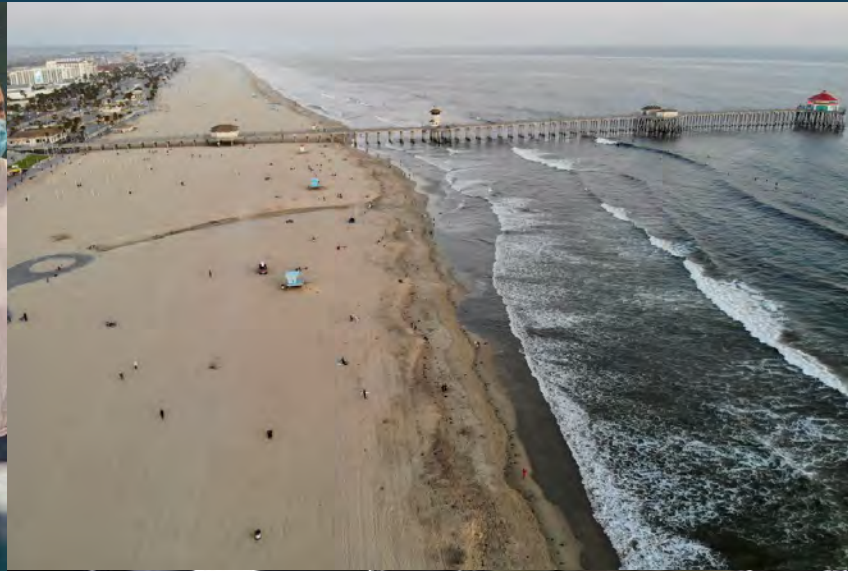


2020-2021 Planning Outlook



Sarah Jepson
Director of Planning

State of the Region

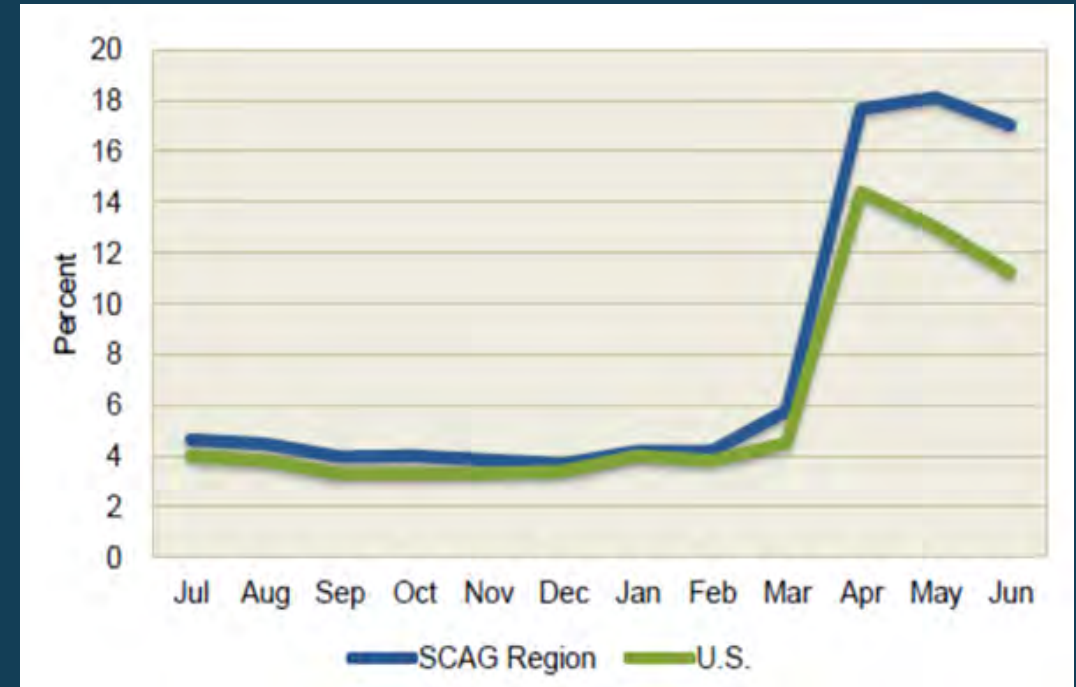
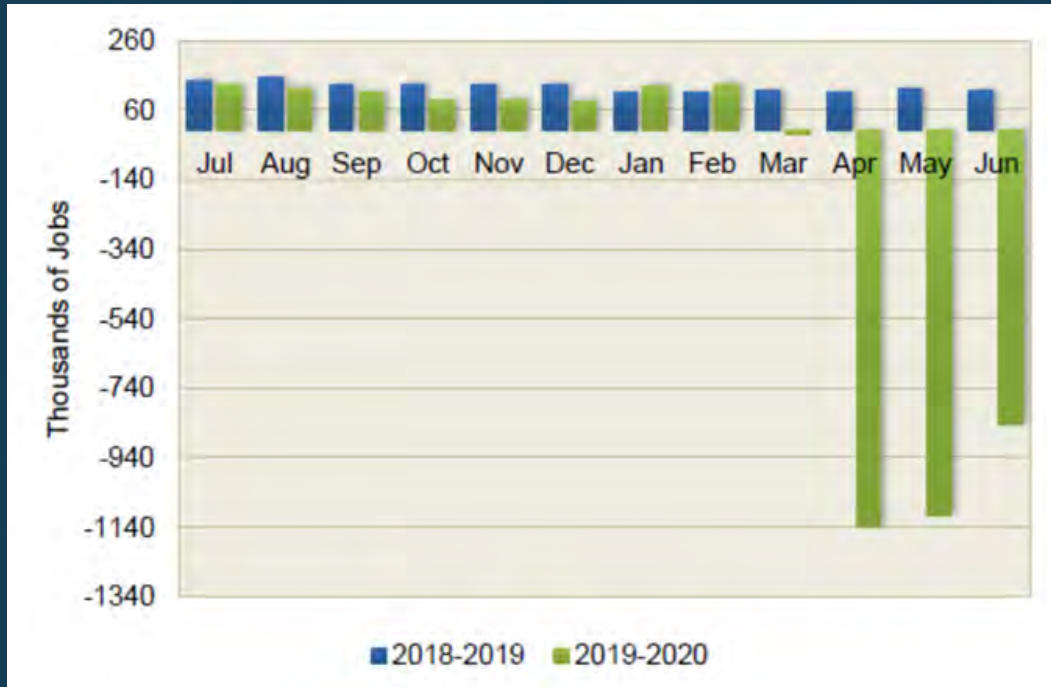


After the Pandemic: SCAG Region's Employment Plunged, Unemployment Rate Skyrocketed



Change in Employment from Prior Year *SCAG Region*

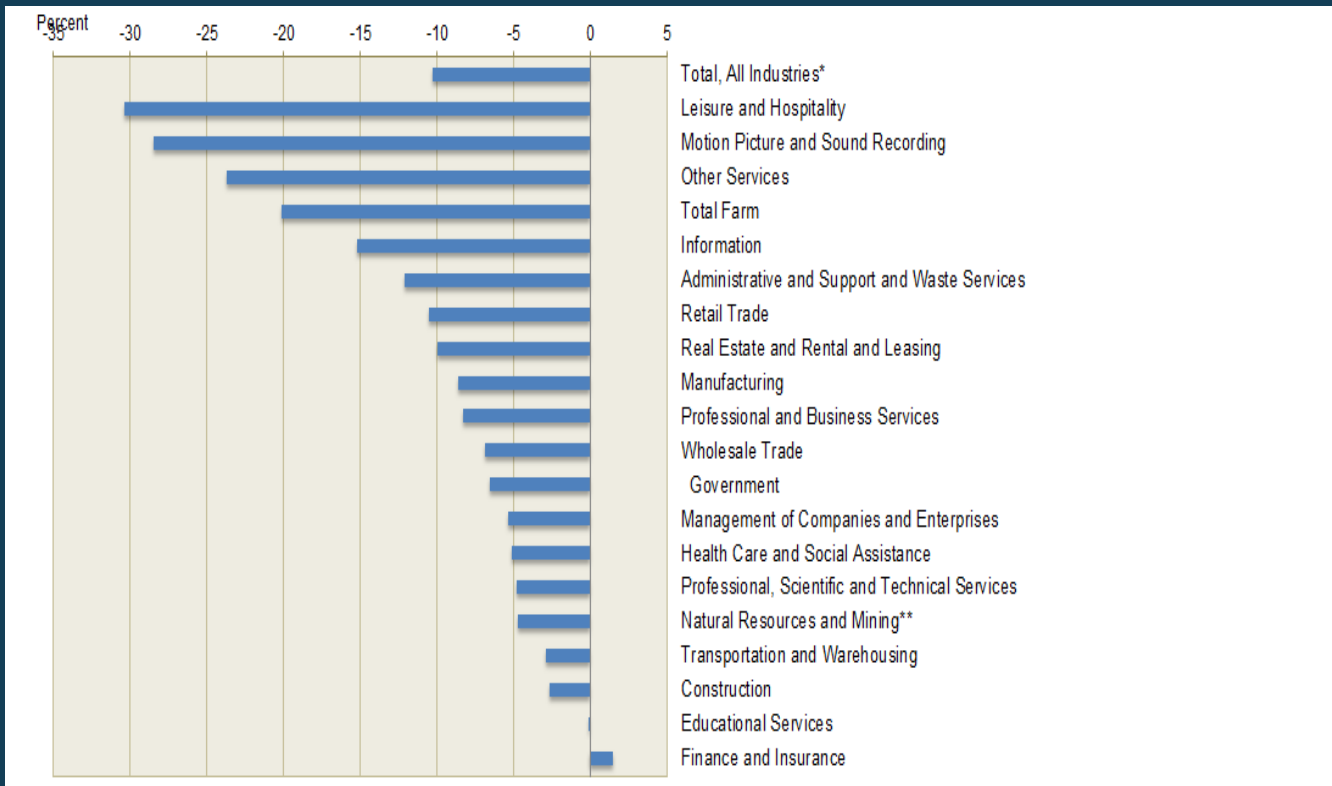
Unemployment Rate *SCAG Region and U.S. (2019-2020)*



Source: CA EDD

Low Wage Sectors Were Hit the Hardest from the Pandemic

Percentage Change in Employment by Major Sector SCAG region (June 2019 – June 2020)



Lowest wage sectors accounted for over 60% of decrease in employment.

Leisure & Hospitality:

- Lowest wages
- Job Snapshot
 - 1M (May 2019)
 - 560K (May 2020)
 - 700K (June 2020)

*Leisure and Hospitality, Total Farm, Other Services, Administrative and Support and Waste Services

Retail Trade and Taxable Sales Declined, Highly Uncertain

Initial regional forecast (4/28) estimates decline by 26% to 38% for Calendar Years 2020, 2021.

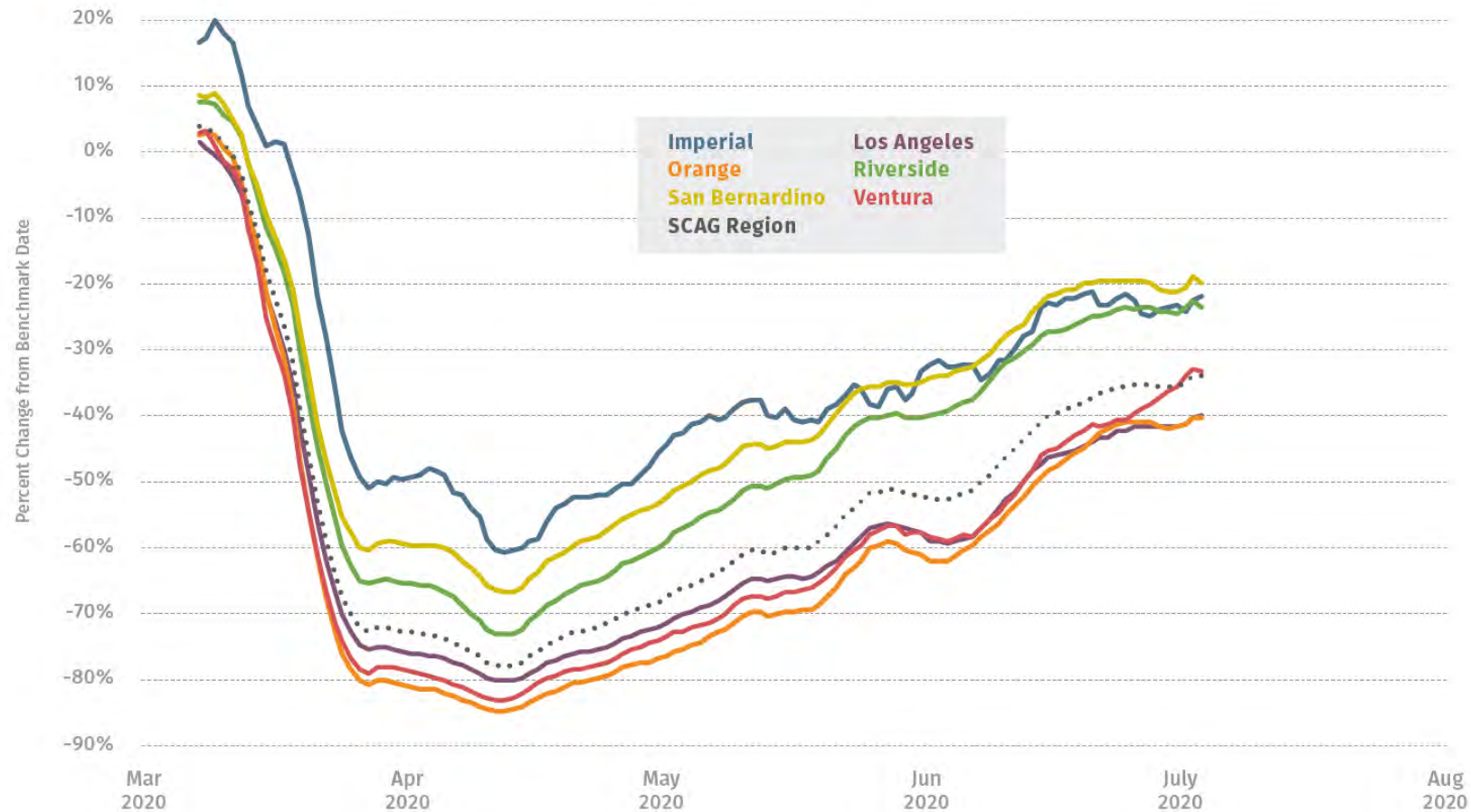
- Initially viewed as highly pessimistic
- April retail trade data in line with overall asserted inputs
- Economic re-opening in May led to relative improvement earlier than our timeline
- Recent resurgence of virus suggests an uneven road ahead

Uncertainties:

- Public health trajectory (treatments, vaccine)
- Additional government spending will backfill some of the losses
- Assumes steady recovery with supply-demand equilibrium throughout

Transportation: Auto Travel Declined Sharply in Early April, Now Nearing Pre-Pandemic Levels

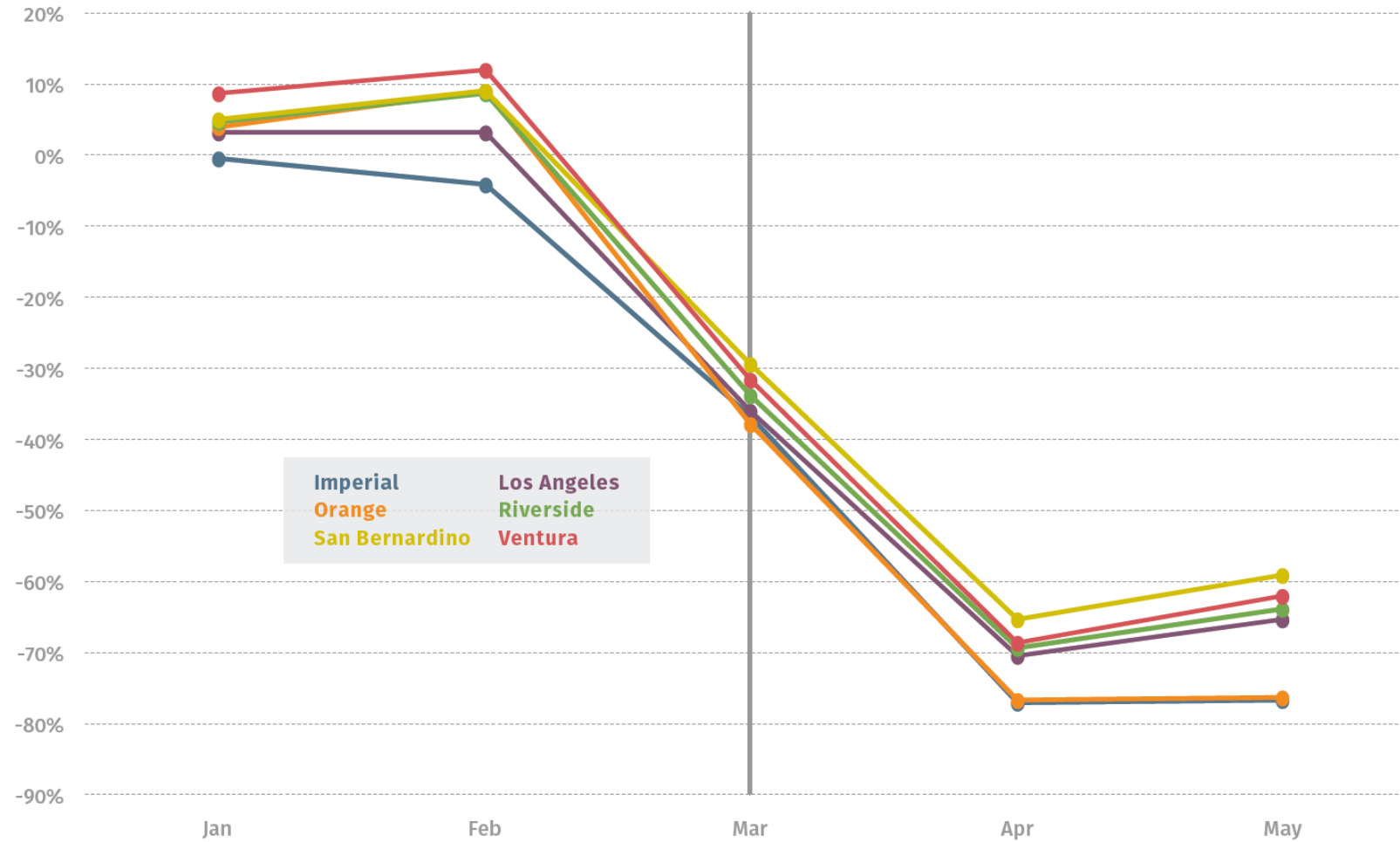
FIGURE 1 Percent Change in 7-Day Moving Average VMT by County (using January 2020 as benchmark)



Source: Streetlight Data

Transportation: Transit Ridership Fell Sharply and Has Remained Low

FIGURE 3 Year-Over-Year Bus Ridership Change, Summarized by County (2019 vs. 2020)



Source: SCAG Analysis of National Transit Database monthly module adjusted database

Transportation: Air Travel Down 95% in April

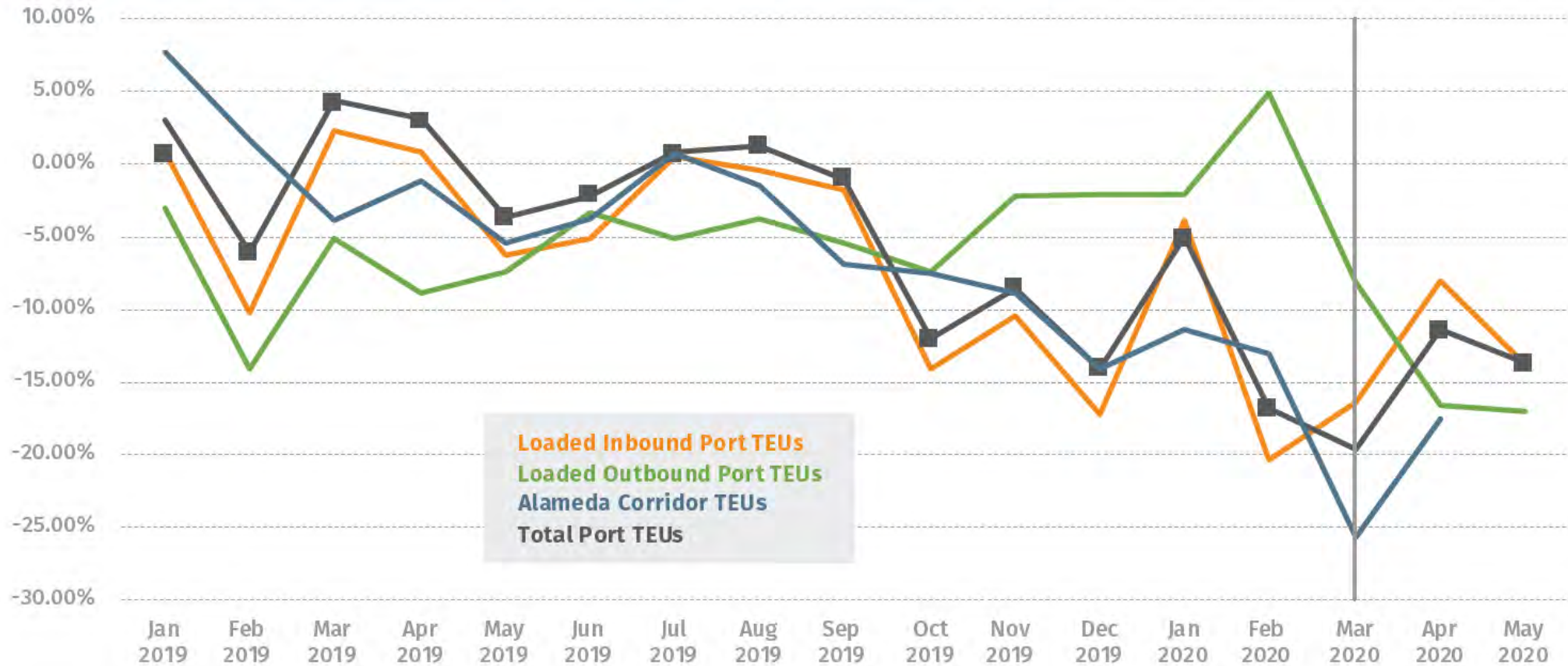
FIGURE 6 Total SCAG Region Airport Passengers (2019 vs 2020)



Transportation: Decline in Port Activity, but Increases in Air Cargo



FIGURE 12 SPBPs & Alameda Corridor Percent Change in TEUs by Month (2019-2020)



Source: SCAG Analysis

Housing: Stakeholder Insights



- Many local jurisdictions have transitioned to online permitting.
- Current projects moving, concern for long-term production.
- Ongoing uncertainty may cause a mass eviction crisis.
- Potential non-payment of rent may impact managed properties, challenge for affordable housing developers
- Jurisdictions seek SCAG support for Housing Elements and policies.

COVID-19 Impacts

Top Impacts to Communities:

Increased vehicle speed and lack of income for rent or mortgage.

Long-Term Concerns:

Lack of government funding and persistent unaddressed inequities.

Connect SoCal Recovery Priorities

88% of respondents rated Connect SoCal's goals as the same or more significant.

- **What planning resources are needed?** Affordable housing planning and social equity and environmental justice planning.
- **What research is needed?** Public health and future of work.
- **What should SCAG collaborate on?** Declining revenues, jobs/housing balance, and regional economic development.

Connect SoCal Implementation Strategy

CORE VISION



**COMPLETE STREETS
INVESTMENT**



**DEMAND & SYSTEM
MANAGEMENT**



**GOODS
MOVEMENT**



**SUSTAINABLE
DEVELOPMENT**



**SYSTEM PRESERVATION
& RESILIENCE**



**TRANSIT
BACKBONE**

KEY CONNECTIONS



**SHARED MOBILITY &
MOBILITY AS A SERVICE**



**SMART CITIES &
JOB CENTERS**



**ACCELERATED
ELECTRIFICATION**



**GO
ZONES**



**HOUSING SUPPORTIVE
INFRASTRUCTURE**

Connect SoCal Implementation Strategy



ADAPT, EXPAND PLANS & PROGRAMS TO FOCUS ON:

Equity & Engagement

Identify need, focus resources, and expand stakeholders.

Inclusive Recovery

Research ongoing impacts and focus recovery on the most vulnerable.

Public Health & Safety

Safe access for essential workers, safe streets, and COVID-19 counter measures.

Resilience

Plan a region resilient to environmental, social, and economic shocks.

Local Capacity Building

Building local capacity to compete for and implement local, state, and federal resources.

Sustainable Communities Program Technical Assistance

- 50% Increase in Funding
- New Funding Categories
 - Housing
 - Smart Cities
 - TDM—Online Permitting
 - Resilience
- More Frequent Calls
- Revised Selection Criteria

Schedule

- September: Active Transportation & Safety
- November: Housing & Sustainable Development
- March: Smart Cities, Mobility Innovation & TDM
- May: Green Region & Resilience

Go Human

- Mini-Grant Program
 - Safety promotion, education expanded to be inclusive of physical distancing and street level community resiliency planning.
 - 28 awards to support pandemic response and recovery.
- Kit of Parts
- Resilient Streets Program and Technical Assistance

Fall/Winter Demos

- Ojai
- Long Beach
- Wildomar
- Calipatria
- Adelanto
- Saticoy
- Perris
- Stanton
- Highland
- Santa Fe Springs

Upcoming RHNA Schedule

September 3, 2020	RC Adopts Connect SoCal in Its Entirety
September 11, 2020	Beginning of the 45-day Appeals Period
October 26, 2020	Beginning of the 45-day Comment Period
December 10, 2020	Beginning of the 30-day Appeals Hearing Period*
February 4, 2021	RC Adopts the Final RHNA Allocation Plan**

** May extend for up to another 30 days pending the number of appeals received*

*** If Appeals Hearing period does not need to be extended*

Housing Production, Preservation & Protection



REAP Program Overarching Objectives

- Accelerate housing production throughout the SCAG region
- Meet the 6th cycle RHNA targets
- Address regional priorities reflected in Connect SoCal

REAP Funding Major Categories

- Outreach & Education
- Call for Collaboration
- Subregional Partnerships—Housing Element Support
- Regional Policy Solutions
- Sustainability Call for Projects
- TOD Partnership
- Completion of the 6th Cycle RHNA



Housing Element Digital Workshop

New Laws and Tools

PART 1

Thursday, Aug. 20, 2020

PART 2

Thursday, Aug. 27, 2020

REGISTER ONLINE: scag.ca.gov/housing



- New housing laws
- ADU capacity & affordability analysis
- Site inventory guidelines
- Technical assistance available from SCAG and HCD

Data & Information Tools to Guide Recovery



Potential Economic Impacts of COVID-19 in the SCAG Region

May 14, 2020

visit us at scag.ca.gov



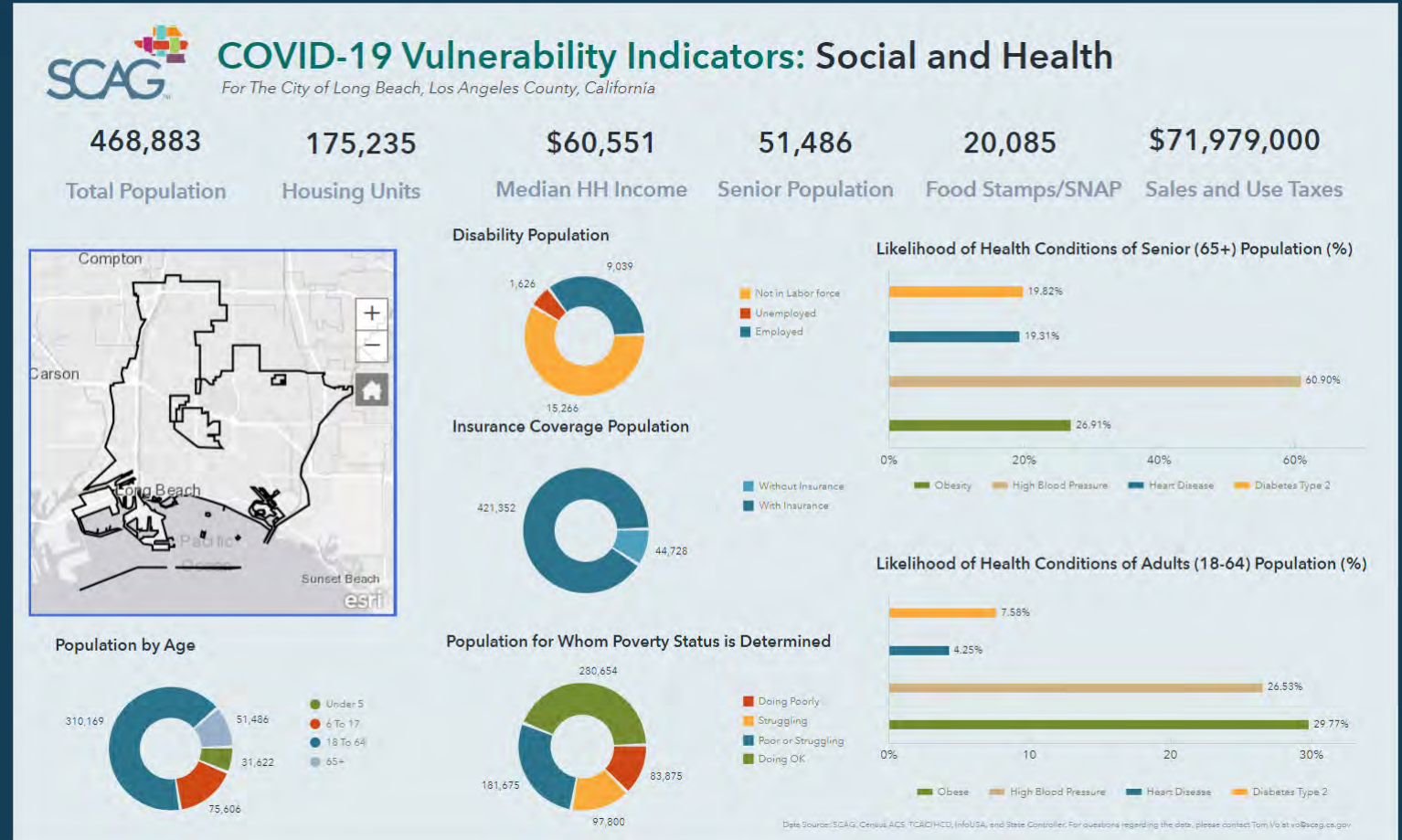
Snapshot of COVID-19 Transportation Impacts in the SCAG Region

August 2020

visit us at scag.ca.gov

Data & Information Tools: Vulnerability Index

- SCAG developed a COVID-19 Vulnerability Indicators Dashboard
 - Social and health
 - Economy
 - Housing
- Purpose
 - Provide context and insightful information for local jurisdictions and stakeholders.



Data & Information Tools: Regional Data Platform

A robust system of systems for regional data sharing and collaboration.

Provides long range planning tools to all member agencies.

Facilitates better planning at all levels.





City of Fullerton
General Plan Update

Local Profile

- Overview
- Population
- Education
- Employment
- Households
- Housing
- Land Use
- Parks and Recreation
- Safety

What is a General Plan?

The General Plan is a policy document approved by the City Council to guide future development within the City. The new 2035 General Plan is organized around elements and Actions within each element to guide future

Local Profile Categories

Category	2019 Statistics	% Change from 2010
Population	144,754	+7%
Households	47,447	+4%
Housing	49,317 housing units	+2,986%
Transportation	78,753 drove alone to work	3.56% worked from home
Employment	57,882 employees	\$34,393 Per Capita Income
Retail Sales	6,336 businesses	\$10,515,978 in total sales
Education	18.2% had a high school diploma	39.9% had a college degree
Public Health	7.5% had no health insurance coverage	5,475 Households in Poverty

1. Follow to Get Updates

Click the follow button below to get updates on the City of Fullerton's General plan. This will allow City planners and staff to notify you of any updates related to the general plan as well as inform you of new opportunities to participate in the general plan update process.

2. Envision Fullerton's Future

Take this brief questionnaire to share your local knowledge and voice your opinions on Fullerton's future. Responses from this questionnaire will be used by City Planners to inform the general plan and provide you an opportunity to help shape the future of Fullerton.

1 of 3

Where in Fullerton do you live?
Click on an area in the map to select a census block
*The map will enter your census block #

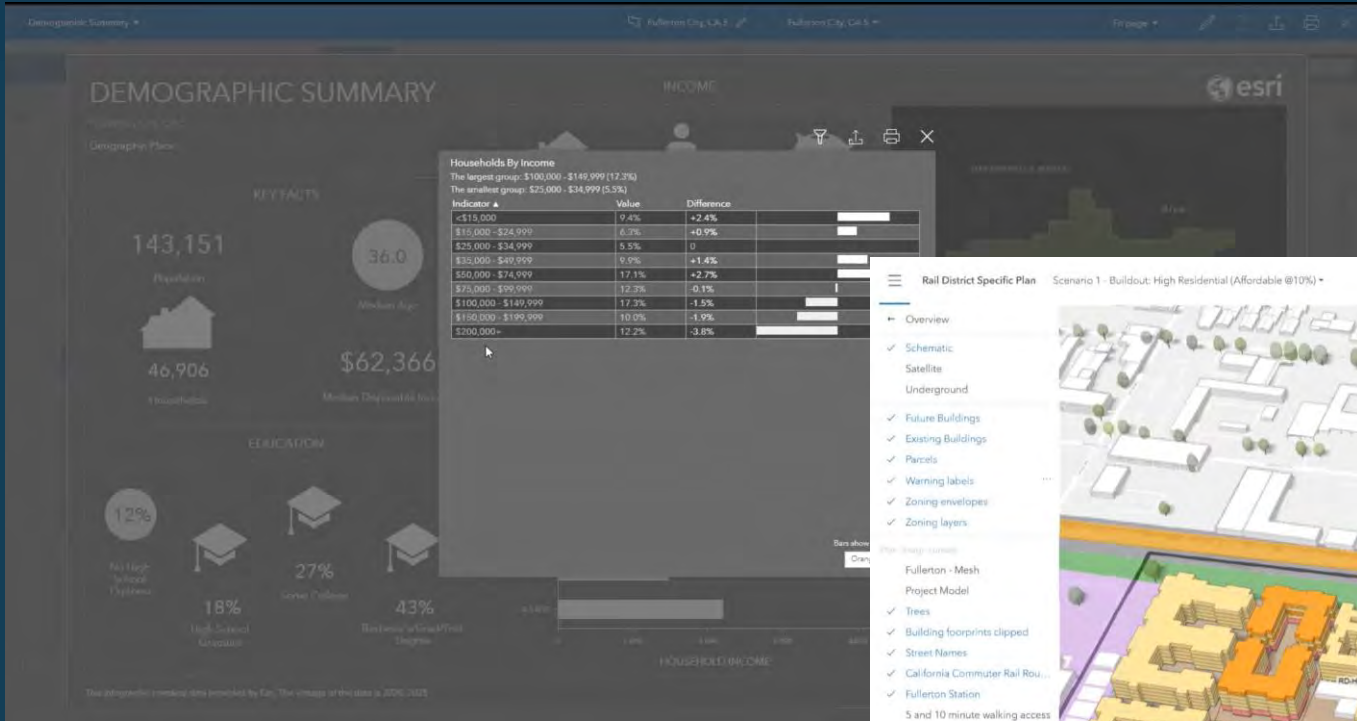
06059001704

How many years have you lived in Fullerton?
Less than 1 | 1-5 | 6-10 | 11-20 | 21-30 | Over 30

How would you rate your overall experience living here?
☆☆☆☆☆

What elements of the General Plan are you interested in?
 Built Environment
 Economy

Next



https://urbanarcgis.com/plan-editor/793780598a814692b153ae12959e97/5c346cae-889d-466d-bca3-4c9d01c906a80fe6e61657114211_a06d-f0d0ef761b21hd-ed0b4d3305804073aet21c0ce6ae20f0camera=349.616%8C42.103%2C-13128142.87%3C4010332410%2C740.106

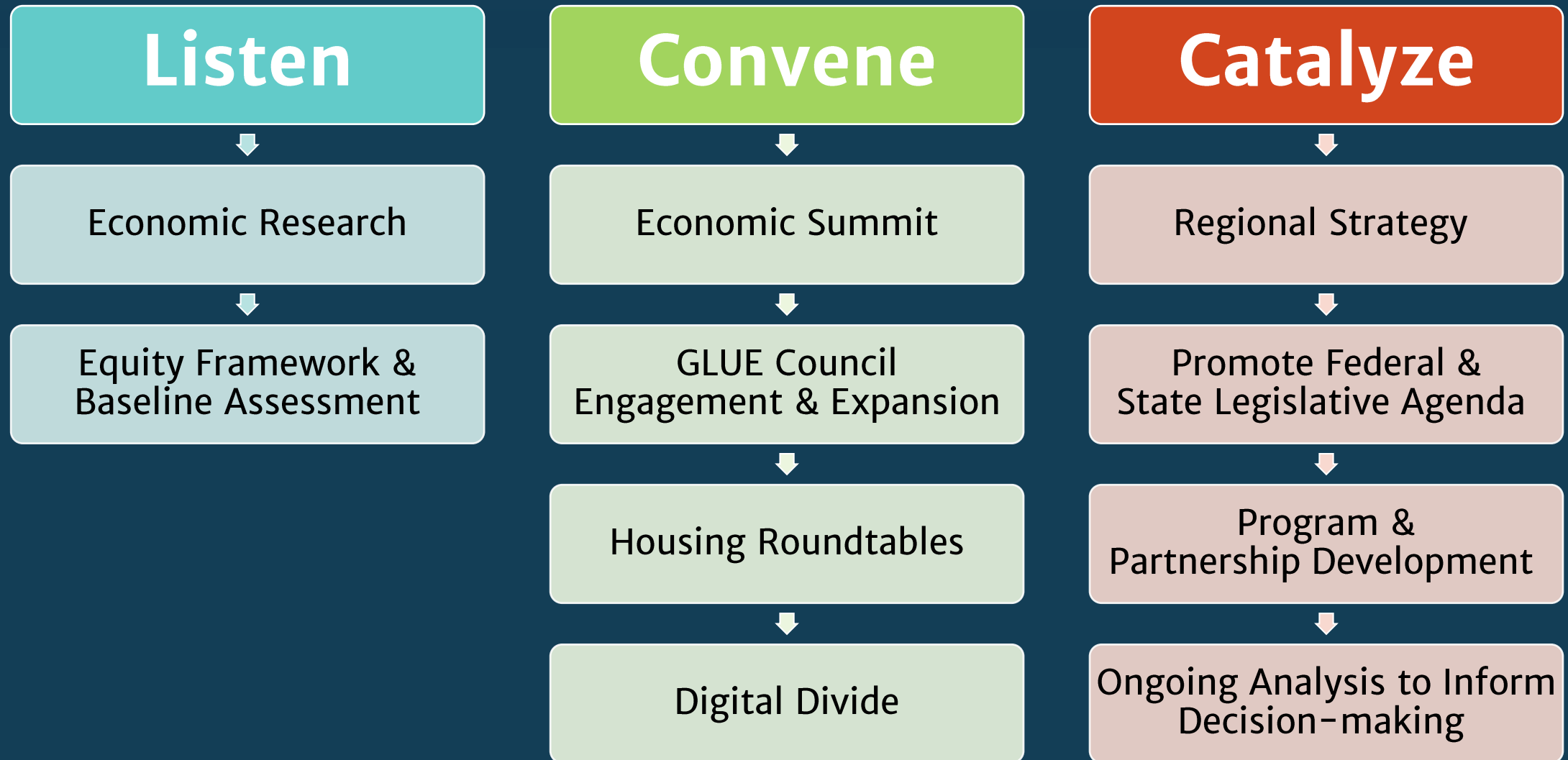


The screenshot displays a web application interface for public feedback on urban plans. On the left, a 'Plans' sidebar is open, showing a 'Feedback' section with a blue notification: 'Plan is open for public feedback until August 14, 2020 11:59 PM -07:00. Drag speech bubble to comment'. Below this, three feedback entries are visible:

- mhaynes_SCAG** (1 day ago): Needs a bus stop. (0 upvotes, 0 downvotes)
- Urban_Christine** (1 days ago): We need more affordable options close to the train station. (1 upvote, 0 downvotes)
- Urban_Christine** (1 days ago): Great idea connecting all the existing open spaces with this green belt! What kind of trees are you planting? (0 upvotes, 0 downvotes)

The main area shows a map with various land use zones labeled: RD-MDR, PL, RD-LMDR, RD-C, RD-Comm, and SPD. A feedback form is overlaid on the map, containing a toolbar with icons for different plan types (bicycle, building, person, house, speech bubble, etc.), a text input field labeled 'Write your feedback...', and 'Ok' and 'Cancel' buttons. The map also features a '2D' view selector and a zoom control.

Regional Economic Recovery Strategy



Regional “Inclusive” Economic Recovery

An inclusive recovery occurs when a place overcomes economic distress in a way that provides the opportunity for all residents—especially historically excluded population—to benefit from and contribute to economic prosperity.

—*Urban Institute*

Good public health policy is good economic policy. Saving lives and saving livelihoods are part of the same road to recovery that we need to pursue today.

—*The Heritage Foundation*

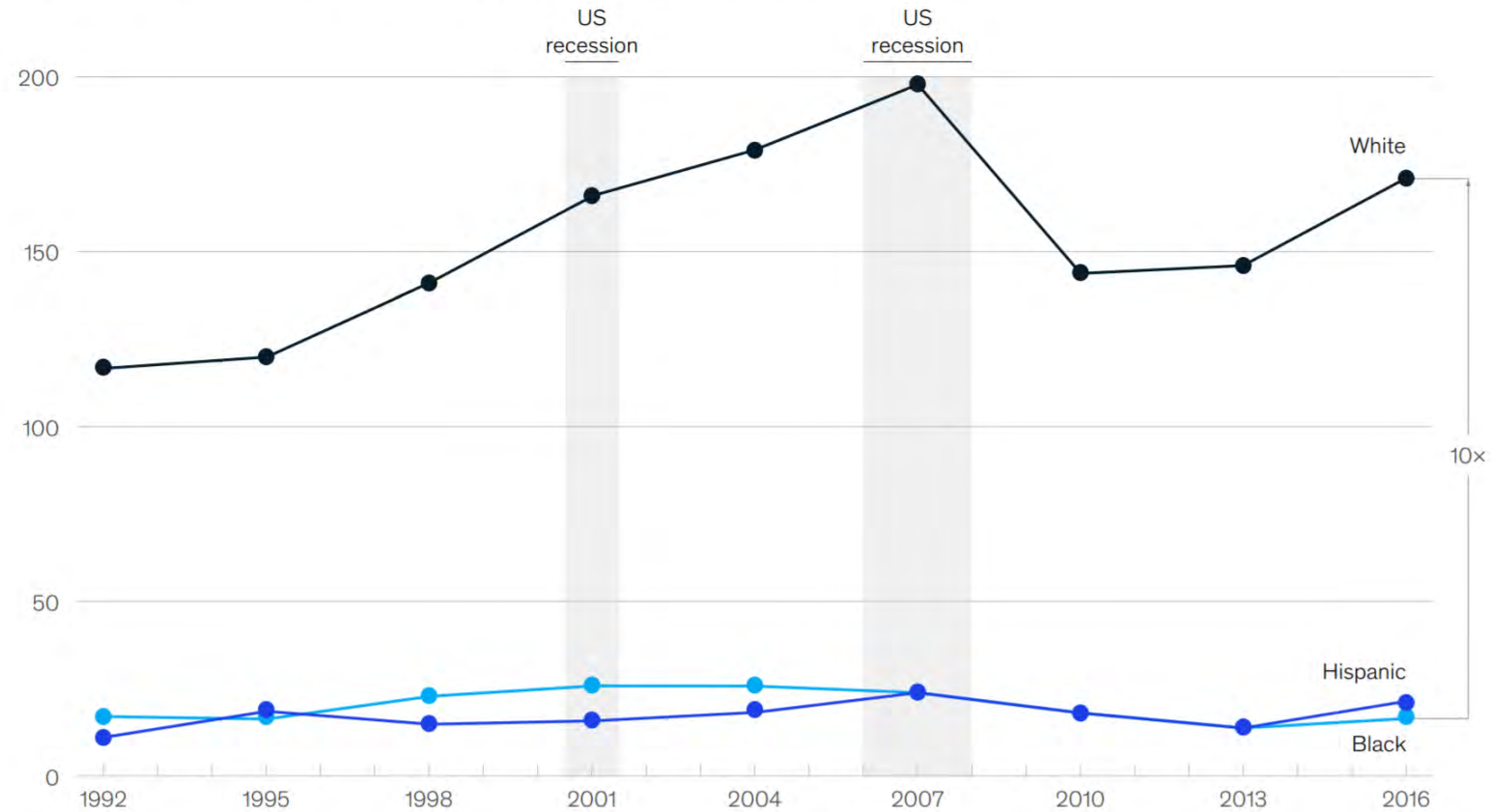
To build an equitable economy, policymakers must: Ensure economic security during the crisis. Use stimulus funds to build the next economy. Forge a new social contract that enables shared prosperity.

—*Policy Link*

Regional “Inclusive” Economic Recovery

There is a wide and persistent gap in wealth between white and black families.

Median family wealth in 1992–2016 by ethnicity/race, \$ thousand¹



¹2016 dollars.

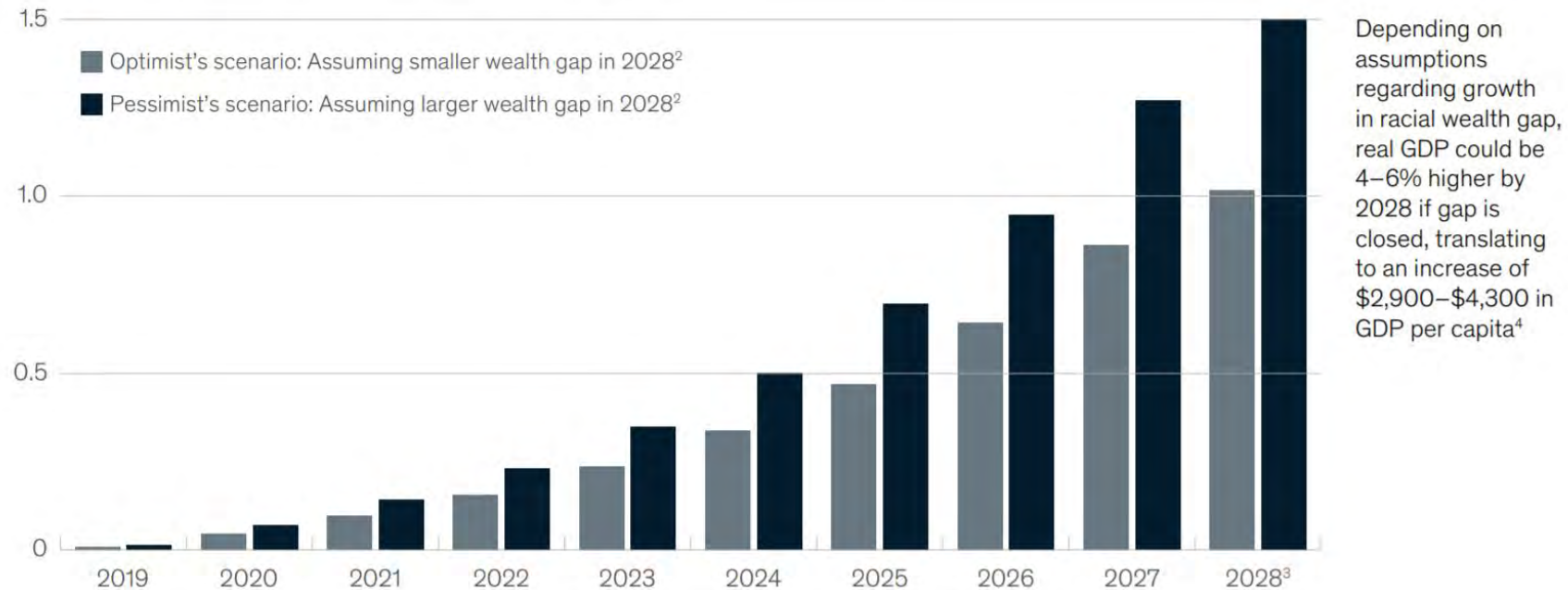
Source: "2016 survey of consumer finances," Federal Reserve Board, September 2017, federalreserve.gov

Source: McKinsey & Company

Regional “Inclusive” Economic Recovery

By closing the racial wealth gap, the US GDP could be 4 to 6 percent higher by 2028.

Real GDP increase from closing racial wealth gap, \$ trillion¹



¹ 2018 dollars.

² Assumes that, over time, wealth gap will close in linear fashion, reaching scenario's assumed targets by 2028.

³ \$2,631 billion–\$3,990 billion in nominal dollars.

⁴ \$7,500–\$11,400 in nominal dollars.

Source: "2016 survey of consumer finances," Federal Reserve Board, September 2017, federalreserve.gov; Oxford Economics; McKinsey Global Institute analysis

Discussion: “Inclusive” Economic Recovery

What is SCAG's role?

Who needs to be involved in the conversation?

Opportunities? Challenges?

Low-hanging fruit?

What does success look like?

**Questions?
Comments?**

www.scag.ca.gov



THANK YOU!

www.scag.ca.gov



2020-2021

Executive/Administration Committee Retreat

Day 2 – August 20, 2020

www.scag.ca.gov



Welcome & Opening Remarks

Rex Richardson
SCAG President



2020-2021

Executive/Administration Committee Retreat

Day 2 – August 20, 2020

www.scag.ca.gov



Special Committee on Equity & Social Justice



Rex Richardson
SCAG President

2020-2021

Executive/Administration Committee Retreat

Day 2 – August 20, 2020

www.scag.ca.gov



Structure, Schedule & Content for Policy Committees

Darin Chidsey
Chief Operating Officer

Permanent Committees



BYLAWS, ARTICLE V (B)

Permanent Committees: For the purpose of developing policy recommendations to the Regional Council, the Regional Council shall establish as permanent committees the “Executive/Administration Committee,” the “Legislative/Communications and Membership Committee” and the three (3) policy committees known as the “Transportation Committee,” the “Energy and Environment Committee,” and the “Community, Economic and Human Development Committee” (the latter three committees collectively referred to herein as the “Policy Committees”). In addition, the “Emerging Technologies Committee” is established by the Regional Council to research and identify new and emerging technologies that may play a role in transportation planning.

Transportation Committee



BYLAWS, ARTICLE V (E)(5)

Duties of the Transportation Committee (TC): The Transportation Committee shall study and provide policy recommendation to the Regional Council relative to the challenges and opportunities, programs and other matters, which pertain to the regional issues of mobility and accessibility, including, but not limited to all modes of surface transportation, transportation system preservation and system management, regional aviation, regional goods movement, transportation on finance as well as transportation control measures.

Transportation Committee

MEMBERSHIP: 61 Members (Q=21)

- Imperial – 1
- Los Angeles – 25*
- Orange – 12
- Riverside – 13^
- San Bernardino – 7
- Ventura – 2
- Caltrans – 1

*Includes Public Transit Rep.

^Includes Air District Rep.



■ Imperial
 ■ Los Angeles
 ■ Orange
 ■ Riverside
■ San Bernardino
 ■ Ventura
 ■ Caltrans

BYLAWS, ARTICLE V (E)(6)

Duties of the Energy and Environment Committee (EEC): The Energy and Environment Committee shall study and provide policy recommendations to the Regional Council relative to challenges and opportunities, programs and other matters, which pertain to the regional issues of energy and the environment. EEC shall also be responsible for reviewing and providing policy recommendations to the Regional Council on matters pertaining to environmental compliance.

Energy & Environment Committee

MEMBERSHIP: 30 Members (Q=10)

- Imperial – 2
- Los Angeles – 11
- Orange – 5
- Riverside – 3
- San Bernardino – 4
- Ventura – 5



■ Imperial ■ Los Angeles ■ Orange ■ Riverside ■ San Bernardino ■ Ventura

Community, Economic & Human Development Committee



BYLAWS, ARTICLE V (E)(7)

Duties of the Community, Economic and Human Development

Committee (CEHD): The Community, Economic and Human Development Committee shall study and provide recommendations to the Regional Council relative to the challenges and opportunities, programs and other matters which pertain to the regional issues of community, economic and human development, housing and growth. CEHD shall also receive information regarding projects, plans and programs of regional significance for determinations of consistency and conformity with applicable regional plans.

Community, Economic & Human Development Committee

MEMBERSHIP: 49 Members (Q=17)

- Imperial – 2
- Los Angeles – 22
- Orange – 11*
- Riverside – 5
- San Bernardino – 7
- Ventura – 1
- Tribal Gvt. Reg. Pln. Brd. – 1

*Includes TCA Rep.



Imperial Los Angeles Orange Riverside
San Bernardino Ventura Tribal Gvt.

Legislative, Communications & Membership Committee



BYLAWS, ARTICLE V (D)(3)

Duties:

- (a) The Legislative, Communications and Membership Committee shall be responsible for developing recommendations to the Regional Council regarding legislative and telecommunications matters; providing policy direction for the agency's marketing communications strategy, outreach issues/materials and electronic communications systems; reviewing sponsorship opportunities whose cost will exceed \$5,000; and promoting agency membership.
- (b) The duties of the LCMC shall include other such duties as the Regional Council may delegate.

Legislative, Communications & Membership Committee

MEMBERSHIP: 19 Members (Q=7)

- Imperial – 1
- Los Angeles – 7
- Orange – 3*
- Riverside – 3
- San Bernardino – 3
- Ventura – 2

**Includes TCA Rep.*



■ Imperial ■ Los Angeles ■ Orange ■ Riverside ■ San Bernardino ■ Ventura

**Questions?
Comments?**

www.scag.ca.gov



2020-2021

Executive/Administration Committee Retreat

Day 2 – August 20, 2020

www.scag.ca.gov



Legislative Program



Art Yoon
Director of Policy &
Public Affairs

SCAG Region Leadership – California State Legislature



Anthony Rendon
Speaker of the Assembly



Robert Hertzberg
Senate Majority Leader



Shannon Grove
Senate Minority Leader



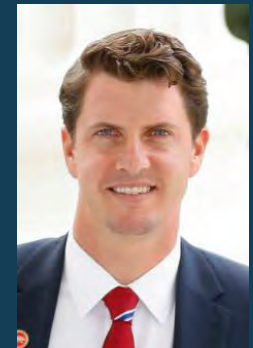
Laura Friedman
Chair, Assembly Natural Resources Committee



Anthony Portantino
Chair, Senate Appropriations Committee



Ben Allen
Chair, Senate Environmental Quality Committee



Henry Stern
Chair, Senate Natural Resources & Water Committee

SCAG Region Leadership – U.S. Congress



Kevin McCarthy
House Minority Leader



Karen Bass
*Chair, Congressional
Black Caucus*



Judy Chu
*Chair, Congressional Asian
Pacific American Caucus*

SCAG's Top Legislative Priorities



State

- CEQA (Modernization, Updating)
- Housing (Planning, Production)
- Transportation Funding (Protection)

Federal

- COVID-19 Relief for Jurisdictions and Transit Agencies
- Freight & Goods Movement (Funding)
- Transportation Reauthorization

Engagement



- Sacramento Summit with EAC and LCMC Members.
- Advocacy Trip to Washington, DC in conjunction with membership organizations' annual conferences or annual California Transportation Reception (typically for Board Officers).
- Congressional and Legislative Meetings (as needed).
- Recess Meetings (in district).
- Invitations for state and federal representatives to participate in SCAG events and committee meetings.

Questions for the EAC to Consider?

- Plan for an in-person Sacramento Summit in February/March of 2021, or plan for virtual advocacy?
- Plan for an in-person advocacy trip to Washington, DC in the Spring of 2021, or plan for virtual advocacy?
- For Recess meetings, conduct virtual advocacy day, or one-off, virtual congressional meetings as Members are available?
- Conduct outreach meetings based on congressional influence or relevant committee membership?
- Request meetings with Senate EPW and Banking Committee Members from outside of California? Perhaps team up with MPOs in targeted regions?

2020-2021

Executive/Administration Committee Retreat

Day 2 – August 20, 2020

www.scag.ca.gov



Promoting SCAG's Work

Historic
PINE AVENUE

Veterans' Organizations



Art Yoon

Director of Policy &
Public Affairs

Promoting SCAG's Work

We have so many tools to promote SCAG's work, but a lot of these are focused on utilizing communications channels:

- Press Releases
- Newspaper Op-eds
- Email Campaigns
- Interviews

As an agency representing six counties and 191 cities, with a Board consisting of 86 members...

How can we get the Board more engaged?

What kind of tools do you need?

How do we equip you to succeed?

Speakers' Bureau Initiative

In Development – A program to proactively place SCAG elected leadership in the field to lead on the President's and agency's priorities.

- Provide preparation and briefing.
- Connect elected officials with speaker opportunities.
- Target launch in Spring 2021.

Priority Speakers' Bureau Issues

- Implementation of Connect SoCal.
- Housing production, preservation and protection.
- Economic recovery.

THANK YOU!

www.scag.ca.gov





JULY RC AGENDA REPORT

Southern California Association of Governments
Remote Participation Only
July 2, 2020

To: Regional Council (RC)

EXECUTIVE DIRECTOR'S
APPROVAL

From: Kome Ajise, Executive Director, Executive Management,
213-236-1835, Ajise@scag.ca.gov

Subject: Presentation on Racial and Social Justice and SCAG's Policy
Statement (Regional Discussion and Action on Equity and
Social Justice)

RECOMMENDED ACTION:

Adopt Resolution No. 20-623-2

STRATEGIC PLAN:

This item supports the following Strategic Plan Goal 1: Produce innovative solutions that improve the quality of life for Southern Californians.

EXECUTIVE SUMMARY:

The unjust and tragic death of George Floyd, among many more, by law enforcement, in the midst of a pandemic that has disproportionately impacted communities of color, has revealed uncomfortable truths about the systemic racism in our society – including in the way we have planned and designed our communities and transportation systems. In Southern California, where we champion our diversity as one of our greatest strengths, the data reveals patterns of inequity and injustice that exist nationwide. To provide context for a conversation among Regional Council members on SCAG's role in addressing equity and social injustice, Professor Michael Lens, an Associate Professor of Urban Planning and Public Policy and Associate Faculty Director of the Lewis Center for Regional Policy Studies, will provide a presentation on planning's role in institutionalizing and perpetuating inequities in communities, and how regional and local policymakers and planners can work to repair the past harms and build communities where all can thrive.

BACKGROUND:

Communities nationwide and across Southern California continue to express their anguish, anger, and calls for action over the senseless and violent deaths of Tony McDade, Elijah McClain, Ahmaud Arbery, Breonna Taylor, George Floyd, and Rayshard Brooks, among others, and the systemic injustice that their deaths, and too many more, reveal in our society. Over the course of the past month we have been grieving these losses and considering how we, as a metropolitan planning

OUR MISSION

To foster innovative regional solutions that improve the lives of Southern Californians through inclusive collaboration, visionary planning, regional advocacy, information sharing, and promoting best practices.

OUR VISION

Southern California's Catalyst for a Brighter Future

OUR CORE VALUES

Be Open | Lead by Example | Make an Impact | Be Courageous

organization, can do more to advance equity, diversity, and inclusion in our region. For years we have been working to bring our diverse residents and local partners together through our plans, projects, and programs to unify the region and increase access to opportunity. While we have done some good work, it has not been enough, and we know that we must do more to combat systemic racism and the inequities that exist in our region.

Our region's greatest asset is its diversity, particularly in its people. People of color currently represent more than 68 percent of the region's population and our diversity is only expected to increase as we move towards 2045, when people of color will represent nearly 80 percent of our population. Our region's residents have among the most geographically diverse origins of any metropolitan region in the nation. There is a disproportionate burden of poverty on people of color relative to their white counterparts. Black (21.5%), American Indian/Alaskan Native (19.4%), and Hispanic (19%) communities experience the highest rates of poverty in our region compared to the white population (13.5%) and Asian population (11.5%). The region's low income families and communities of color also tend to reside in areas of the region where they experience more poor air quality, resulting in more asthma emergency room visits (e.g., areas near freeways and high traffic roads). What we know and what continues to be reinforced through the analysis of our conditions and now through COVID-19 is that where you live matters. A range of economic and social impacts such as health outcomes, education, employment, housing conditions, the likelihood of incarceration, and life expectancy, vary vastly in this region based on race, income and census tract. Across the region, life expectancy ranges drastically, from 68 to 93 years, depending on where you live.

As a regional planning organization, understanding the disparities that result from geography and the built environment are central to our work to plan for a more racially just, equitable future. Our long-range plan, Connect SoCal, includes an extensive Environmental Justice (EJ) Technical Report with detailed analyses on current conditions and the consequences of the region's transportation projects on low income communities and communities of color. Consideration of EJ stems from Title VI of the Civil Rights Act of 1964, which establishes the need for transportation agencies to disclose the benefits and burdens of proposed projects on communities of color. The goal is to avoid, minimize, or mitigate disproportionately high and adverse human health and environmental impacts on low income families and communities of color. In an effort to support communities as they develop their own Environmental Justice Elements to comply with SB 1000, SCAG embedded an Environmental Justice Toolbox within the EJ Technical Report. The Toolbox includes recommended strategies and resources to address potential impacts to EJ Areas, Disadvantaged Communities, Communities of Concern, and other EJ related communities, and it presents optional policy recommendations that may be effective in addressing EJ impacts after a comprehensive review of impacts and consultation with all stakeholders.

SCAG is also active in state, regional, and local conversations on how to embed public health considerations into land use and transportation planning. Specifically, at the statewide level, SCAG staff currently serves on California's American Planning Association Planners 4 Health Steering Committee, which aims to increase local capacity for creating stronger, healthier communities, and promote greater coordination between planners and public health professionals at the state, regional, and local levels. At the regional level, Connect SoCal includes a robust, data-driven Public Health Technical Report which is grounded in the Social Determinants of Health (SDOH), a public health framework which is centered on the built environment and conditions in which we live, work, play and age. We know that the SDOH contribute to a wide range of disparate health outcomes depending on where you live, and that the rates of asthma, diabetes, and other chronic diseases in communities of color is greater than those for the region as a whole. It has become all too common to blame adverse health outcomes on individual behaviors when in fact the science is clear: the root cause of health inequities is racism and discrimination and how it limits access to the very opportunities and resources each of us need for optimal health and well-being. Science also tells us that that lifetime stress associated with experiences of daily acts of discrimination and oppression play a major role.¹ When we see elevated numbers of deaths in communities of color in our region due to COVID-19, we are witnessing the consequences of these long-standing inequities.

We are fortunate that the planning profession has evolved to take health equity and equity more broadly into account, and that it is now widely recognized that while transportation and land use decisions are shaping neighborhoods, they are also influencing health outcomes, access to education and employment, housing conditions, and life expectancies. Unfortunately, federal and state policies that now support this focus (e.g., Civil Rights Act of 1964, Executive Order 12898, and California Senate Bill 1000) were preceded by decades of policies that were often explicitly racist and resulted in inequities that persist to this day. Specifically, the Federal Housing Administration (FHA), which was established in 1934, furthered segregation by refusing to insure mortgages in and near predominantly Black neighborhoods — a policy that came to be known as "redlining" or the delineation of geographic areas for investment. At the same time, the FHA was subsidizing builders who were mass-producing entire subdivisions for white people, with the requirement that none of the homes be sold to Black people. Years later, with support from the Housing Acts of 1949 and 1954 and the Federal Aid Highway Act of 1956, entire neighborhoods were cleared out in the name of urban renewal, displacing residents using tactics such as eminent domain and condemnation laws. These federal economic and housing policies led to racial segregation, where neighborhoods of color struggled with isolation, high concentrations of poverty, chronic disinvestment, high rates of unemployment, and poor life outcomes. They also denied people of color access to the same opportunities to accumulate household wealth through homeownership contributing to enormous wealth and income gaps that remain today between white families and communities of color.² We

¹ Gee, Gilbert C. and Ford, Chandra L. *Structural Racism and Health Inequities: Old Issues, New Directions*, (accessed June 27, 2020).

² Rothstein, Richard. *The Color of Law: A Forgotten History of How Our Government Segregated America* (New York: Liverwright Publishing Corporation, 2017).

can see evidence of these policies in our region where roughly 60 percent of white people own homes, compared to about 40 percent of Hispanic people and 35 percent of Black people.

Recently adopted legislation will help us work towards improving the availability of housing for all residents. In 2018, the State of California adopted legislation requiring local governments to “affirmatively further fair housing.”³ Under State law, to affirmatively further fair housing means “taking meaningful actions, in addition to combatting discrimination, that overcome patterns of segregation and foster inclusive communities free from barriers that restrict access to opportunity based on protected characteristics.”⁴ The new law strengthened provisions of the State Housing Element law, which require general plans of all cities and counties to plan for housing for all Californians. SCAG is required, through the regional housing needs allocation (RHNA) process, to work with local jurisdictions to update their housing elements to plan for their fair share of housing. This involves modifying land use and zoning codes and developing supportive policies and programs for development of a variety of housing types for all income groups, including programs for preservation and construction of affordable housing, and removal of government barriers.

As a government agency focused on planning, we have the opportunity, and in some cases the legal obligation, to analyze and address the inequities that government and the planning profession have created by systemically driving and perpetuating societal differences along racial lines that have resulted in vastly different living and social conditions and access to opportunities. While we consider low income families and communities of color impacts in our regional growth, transportation, and economic development planning and analysis, we recognize that more affirmative approaches that seek to counter the effects of historic practices, like those being pursued through state housing law to overcome patterns of segregation and foster inclusive communities, are needed to advance equity and social justice across the region.

Planning for Equity and Social Justice

If Southern California is going to be the healthy, livable, sustainable, and economically resilient region we aspire to be, we need to dramatically improve outcomes for low income families and communities of color. By addressing the barriers faced by these communities, we will improve outcomes for other communities as well and strengthen our region. We need to plan for our future by addressing the long-standing systemic and institutional barriers that have fostered racial inequities in health, wealth, and opportunity, and created obstacles for low income families and communities of color.

To further these objectives, President Rex Richardson directed staff to prepare a resolution that would: 1) affirm SCAG’s intent to stand side-by-side with those working toward a fair and just

³ AB 686 Summary of Requirements in Housing Element Law, California Department of Housing and Community Development Memorandum to Planning Directors et. al, April 23, 2020; AB 686, Ch. 958 (Santiago) Statutes of 2018.

⁴ California Government Code § 8899.50 (a)(1).

society, and with those calling for systemic change and for the breaking down of barriers that reduce opportunity and undermine Southern California's shared prosperity; and 2) outline SCAG's intentions to consistently incorporate equity awareness into every aspect of its work guided by a Regional Council policy statement on equity and social justice. The President is also proposing the formation of a Special Committee on Equity and Social Justice to recommend a set of policies to the Regional Council and any necessary bylaw changes to the General Assembly to help SCAG meet its objectives. The work of the committee may include, but not be limited to:

- Establishing an agency-wide definition of "equity" to have a shared understanding of it.
- Providing guidance on the development of SCAG's internal Equity, Diversity, and Inclusion work plan that prioritizes, supports, and invests in equity, diversity, and inclusion.
- Reviewing SCAG's public participation plan and stakeholder engagement strategies to lift up voices of communities of color and other disadvantaged communities to ensure meaningful engagement and capacity-building opportunities for communities most impacted by racial and social injustice.
- Developing an Equity Inventory Report, which would catalogue the existing equity-related activities throughout SCAG's departments.
- Establishing an Equity Framework containing quantitative and qualitative indicators of existing inequities and disparities that exist in the region, and how communities and people in the region experience SCAG's desired outcomes.
- Preparing a set of policies and recommended changes to SCAG bylaws as necessary to guide and sustain SCAG's regional leadership in service of equity and social justice.

To ensure progress, SCAG staff would report back on the work of the Special Committee on Equity and Social Justice at regular intervals - 3 months, 6 months, and 9 months, with the expectation that a final set of recommendations shall be prepared, including any recommendations to SCAG's bylaws within 9 months, for consideration by the Regional Council and General Assembly in May 2021. We stand ready to work with all of you in the months ahead to build a more just, equitable, and prosperous region.

FISCAL IMPACT:

Funding for staff work on this issue is included in the Project 21-050.0169.08.

ATTACHMENT(S):

1. Resolution No. 20-623-2
-



SOUTHERN CALIFORNIA
ASSOCIATION OF GOVERNMENTS
900 Wilshire Blvd., Ste. 1700
Los Angeles, CA 90017
T: (213) 236-1800
www.scag.ca.gov

REGIONAL COUNCIL OFFICERS

President
Rex Richardson, Long Beach

First Vice President
Clint Lorimore, Eastvale

Second Vice President
Jan C. Harnik, Riverside County
Transportation Commission

Immediate Past President
Bill Jahn, Big Bear Lake

COMMITTEE CHAIRS

Executive/Administration
Rex Richardson, Long Beach

Community, Economic &
Human Development
Jorge Marquez, Covina

Energy & Environment
David Pollock, Moorpark

Transportation
Cheryl Viegas-Walker, El Centro

RESOLUTION NO. 20-623-2

**A RESOLUTION OF THE SOUTHERN CALIFORNIA
ASSOCIATION OF GOVERNMENTS (SCAG) STATING
CONVICTION THAT SYSTEMIC RACISM IS A HUMAN RIGHTS
AND PUBLIC HEALTH CRISIS WHICH RESULTS IN DISPARITIES IN FAMILY
STABILITY, HEALTH AND MENTAL WELLNESS, EDUCATION, EMPLOYMENT,
ENVIRONMENTAL JUSTICE, ECONOMIC DEVELOPMENT, TRANSPORTATION,
PUBLIC SAFETY, INCARCERATION AND HOUSING AND REAFFIRMING
ITS COMMITMENT TO ADVANCING JUSTICE, EQUITY, DIVERSITY AND
INCLUSION IN SOUTHERN CALIFORNIA**

WHEREAS, SCAG is the largest metropolitan planning organization (MPO) in the United States covering six counties (Imperial, Los Angeles, Orange, Riverside, San Bernardino and Ventura), and serving 19 million people pursuant to 23 USC § 134 et seq. and 49 USC § 5303 et seq. subject to the 1964 Civil Rights Act and the 1994 Presidential Executive Order No. 12898 on Environmental Justice; and

WHEREAS, SCAG is responsible for bringing Southern California's diverse residents and local partners together with unifying regional plans, policies, and programs that result in more healthy, livable, sustainable, and economically resilient communities; and

WHEREAS, communities across Southern California and nationwide continue to show their pain, anger, and calls for action over the senseless and violent deaths of Tony McDade, Elijah McClain, Ahmaud Arbery, Breonna Taylor, and George Floyd, among others, as well as the systemic injustice in our society that led to these deaths and of too many more people of color; and

WHEREAS, SCAG acknowledges the historic role government and the planning profession have played in systemically driving and perpetuating societal inequities along racial lines that have resulted in vastly different living and social conditions and access to opportunities; and

WHEREAS, the compounding effects of the COVID-19 pandemic and resulting economic disruption have exposed the gross inequities that exist in our society; and

WHEREAS, SCAG recognizes that systemic racism resulting from the inherent biases and prejudices within social and political organizations, groups, or institutions continue to create barriers to success for people of color; and

WHEREAS, systemic racism negatively impacts the social determinants of health, such as socioeconomic status, education, neighborhood and physical environment, employment, and social support networks, as well as access to health care; and

WHEREAS, SCAG seeks to lead and/or join efforts to reverse the effects of the inequitable policies, processes, and practices of the past, and recognizes that it has a role to play in understanding and communicating the impacts that planning decisions have on low income families, communities of color and other disadvantaged communities.

NOW, THEREFORE, BE IT RESOLVED, by the Regional Council of the Southern California Association of Governments, that;

1. SCAG stands in solidarity with those working toward a fair and just society, and with those calling for systemic change to eliminate all barriers that reduce opportunity and undermine Southern California's shared values and ability to thrive; and SCAG affirms its commitment to meaningfully advance justice, equity, diversity, and inclusion; and SCAG declares its intent to end racial and social disparities internal to the agency, strengthen the way it engages and convenes to protect and expand community voice and power, and work in partnership with others to close the gap of racial injustice and better serve our communities of color, and in so doing, serve all the people of the region.
2. Furthermore, based upon this affirmation, an ad hoc Special Committee on Equity and Social Justice shall be established by the President to further develop SCAG's response to advancing social justice throughout the agency's activities, and advise the Regional Council on policies and practices to advance its resolved intentions. Regular reports shall be provided to the Regional Council on the work of the committee and a final set of recommendations shall be prepared, including any recommendations to amend SCAG's bylaws within 9 months, for consideration by the Regional Council and General Assembly in May 2021.

PASSED, APPROVED AND ADOPTED by the Regional Council of the Southern California Association of Governments at its regular meeting this 2nd day of July, 2020.

[SIGNATURES ON FOLLOWING PAGE]

Rex A. Richardson
President, SCAG
Councilmember, City of Long Beach

Attested by:

Kome Ajise
Executive Director

Approved as to Form:

Justine Block
Acting Chief Counsel



Special Committee on Equity and Social Justice

Purpose

Advise the Regional Council on policies and practices to:

- End racial and social disparities internal to the agency.
- Strengthen the way it engages and convenes to protect and expand community voice and power.
- Work in partnership with others to close the gap of racial injustice and better serve our communities of color, and in so doing, serve all the people of the region.

Provide regular reports to the Regional Council on the work of the committee and a final set of recommendations shall be prepared, including any recommendations to amend SCAG’s Bylaws within 9 months, for consideration by the Regional Council and General Assembly in May 2021.

Proposed Work Plan

	Agenda	Outcomes/Deliverables
Meeting 1 -Sept	<ul style="list-style-type: none"> • Discuss agency-wide definition of “equity” • Review Draft Equity Inventory Report • Outside Speaker 	October EAC -- 3 Month Report
Meeting 2 -Nov	<ul style="list-style-type: none"> • Review and discuss SCAG's internal Equity, Diversity, and Inclusion work plan • Review and discuss SCAG’s public participation plan and stakeholder engagement • Outside Speaker: 	December EAC -- 6 Month Report
Meeting 3 -Jan	<ul style="list-style-type: none"> • Final Equity Inventory Report • Review and discuss Regional Equity Framework-- quantitative and qualitative indicators to inform regional planning, economic recovery strategy. • Outside Speaker 	February EAC— 9 Month report
Meeting 4 -March	<ul style="list-style-type: none"> • Review and discuss final report, prepare set of policies and recommended changes to SCAG bylaws as necessary to guide and sustain SCAG’s regional leadership in service of equity and social justice 	EAC, RC, GA Report— Final Report, Recommendations